



HEALTHWAYS 1970 CATALOG



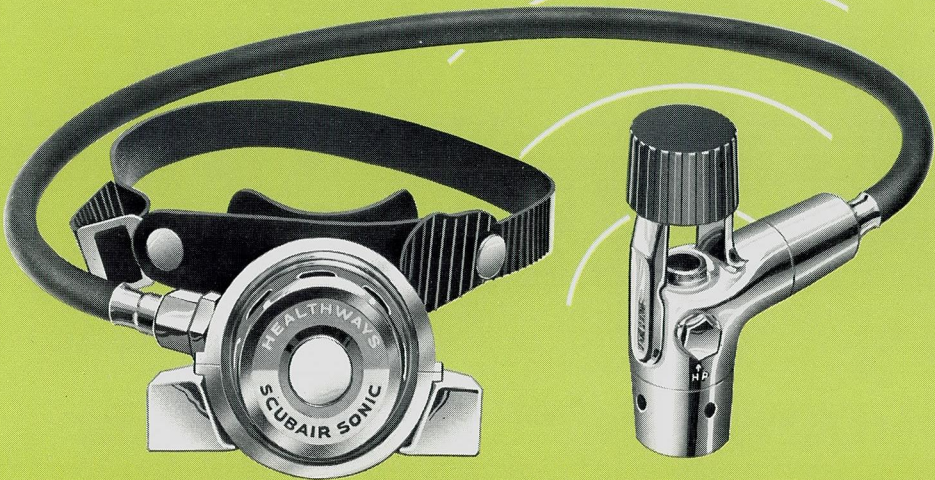
As a pioneer and leader in single hose regulators, Healthways has been fortunate in having developed many firsts. Healthways was the first to offer the piston regulator... the most popular type in the world today. The first to include a "J" Reserve mechanism in the first stage of a regulator. And now, the first to successfully incorporate a scientific alarm system inside the regulator. . . a sonic alarm that won't let a diver and his buddy forget when one of them is breathing reserve air.

THE SCUBAIR SONIC 300

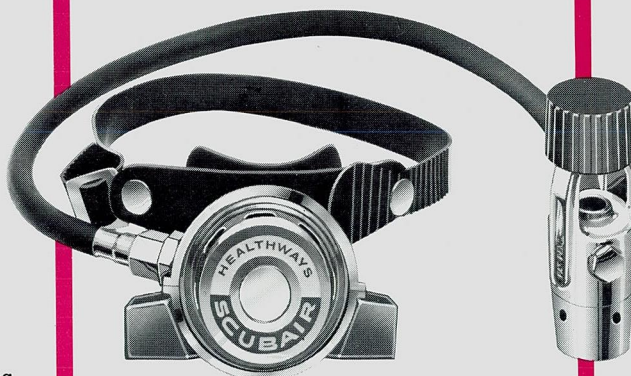
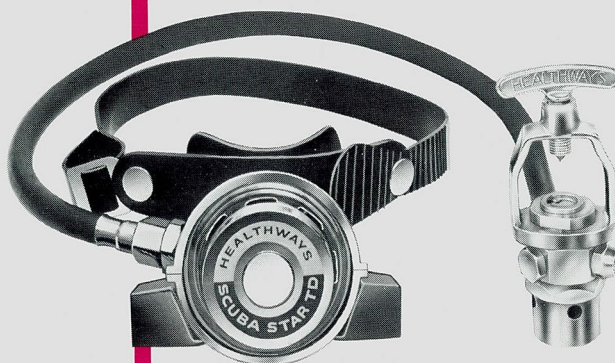
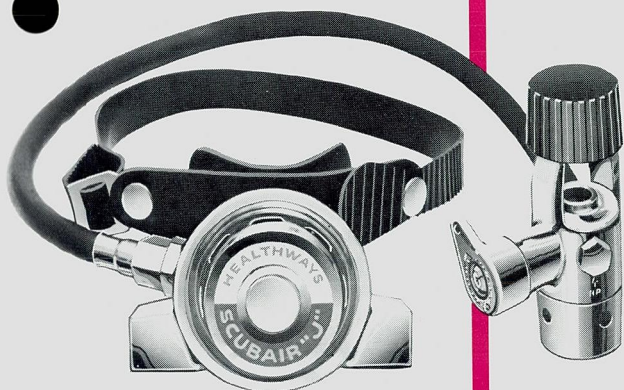
At 300 PSI...sends out a beeping sound. First Stage: Incorporates a fully automatic reserve warning device that eliminates the manual manipulation of a "J" type reserve. Provides a clearly audible sonic alarm signaling the diver and his buddy that the diver is breathing reserve air and is ready to start a safe ascent. Underwater the alarm is a continuous beeping sound accompanying each inhalation effort. Once the alarm sounds, there is no possibility of anyone within a few hundred yards, even topside, forgetting it. Other features include:

- New streamlined housing, with large sure-grip knob for fast connect/disconnect, even with wet, cold or gloved hands.
- The elimination of the pull-rod which assures a full tank of air each time the cylinder is filled.
- The economy of a less expensive "K" valve tank for the original and successive tank purchases. It can also be used with a "J" tank valve with "J" reserve lever in the "down" position.

1685 Scubair Sonic 300 . . . \$100.00



SCUBAIR SONIC 300



THE SCUBAIR "J"

First Stage: Incorporates a spring loaded mechanism that provides the diver with a 300 PSI constant air reserve, even though his tanks are not equipped with reserve valves. New streamlined housing includes large sure-grip knob for fast connect/disconnect, even with wet, cold or gloved hands. With Scubair "J" the diver enjoys the economy of the less expensive "K" valve tank, or the "J" tank valve with the "J" reserve lever in the "down" position.

1680 Scubair J **\$85.00**

THE SCUBAIR

First Stage: Features an enlarged piston which assures the diver an ample supply of air for easy breathing at all sport diving depths. The Scubair also features the new, large sure-grip knob for fast connect/disconnect, even with wet, cold or gloved hands.

1675 Scubair **\$63.00**

THE SCUBA STAR TD*

*Total Demand Regulator

First Stage: The Scuba Star TD, with its piston type first stage with one moving part, is the ultimate in simplicity of design and ease of maintenance.

This rugged, dependable, easy breathing regulator is a truly professional diving unit; it is America's most popular regulator in the economy class.

1667 Scuba Star TD
Regulator **\$57.00**

REGULATOR SECOND STAGES

All Healthways regulator second stages incorporate a "downstream" demand valve. Provides the diver with maximum air supply at any depth or tank pressure, with minimum breathing effort...Serves as a safety valve in case of an over-pressure in the air supply hose. All second stages also feature:

- Contoured air exhausts with double exhaust valves.
- Recessed, snag-free purge buttons for quick, sure purge.
- Cover retainer ring which is easily removed for inspection.
- Laboratory and field tested hoses with "O" ring seals.
- Chromed brass and stainless steel construction throughout.

FIVE YEAR WARRANTY

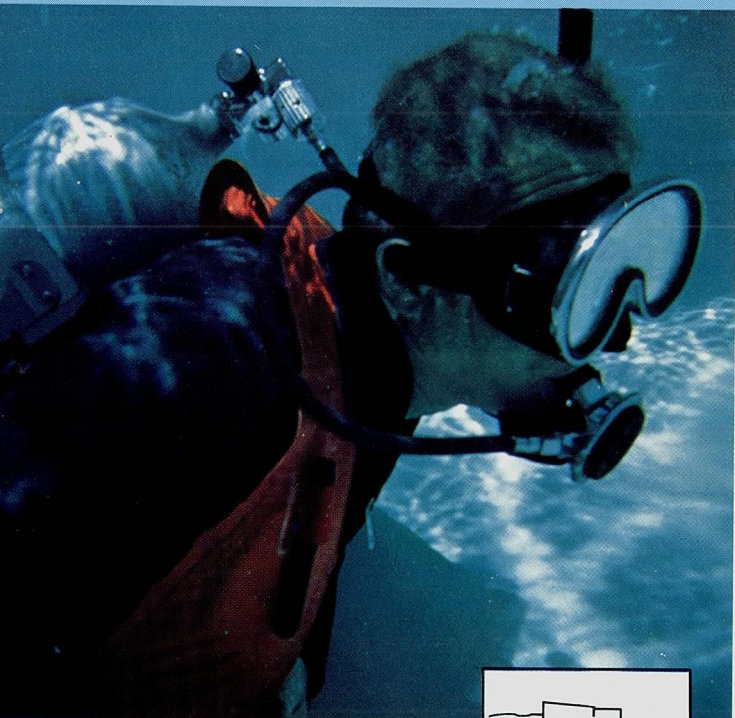
As a result of proven field performance, all Healthways regulators — The Airflo, The Scubair Sonic 300, The Scubair "J", The Scubair and the Scuba Star TD — are now unconditionally guaranteed against any defects in material or workmanship for FIVE YEARS from the date of purchase.

See the new Airflo Regulator on page 4.



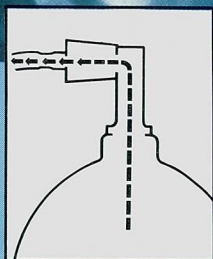
EASY HOOK-UP

Streamlined, snag-free. Screws into valve port. Ends awkward yoke handling. Grooved for sure connect/disconnect, even with wet, cold or gloved hands.



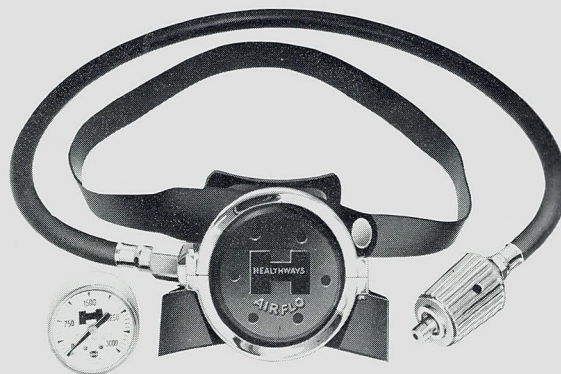
EASY BREATHING

Direct air flow from tank to first stage causes "lift-off" action on piston. Inhaling is easier giving more air with less effort.

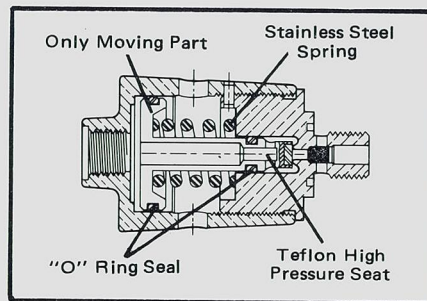


"AIRFLO"

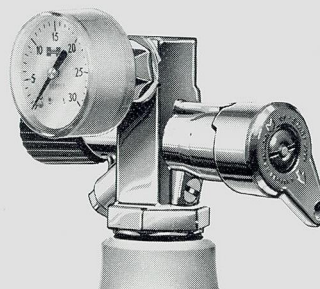
the new twist in regulators



The Airflo Regulator is a bold new approach...the first innovation in a piston type regulator...for simplicity and greater efficiency at lower cost! This cut-away drawing shows how Airflo's first stage is the simplest yet.



Second Stage: Full diameter rubber purge plate purges wherever touched. Rear extended double exhaust clears view of bubbles. Downstream demand valve gives maximum air...with minimum inhaling effort... and serves as a safety valve in case of over-pressure in air supply hose.



Airflo Tank Pressure Gauge—Optional. Screws into valve port. Has an automatic self-bleeder for a quick check of air left in tank. Shock proof cover.

- 1670 Airflo Regulator** **\$48.00**
- 1670-10 Airflo Regulator w/Tank Pressure Gauge (\$13.00 value)** **\$60.00**



Find the snorkel that "feels best" for you

THE FREE FLOW

For the sophisticated diver, Healthways new "Free Flow" features: the one piece, U-shaped molded rubber elbow with its comfortable mouthpiece providing greater diameters at all points for the free flow of a greater volume of air through the big barrel tube. Clear plastic, contoured tube wraps snugly around one side of the diver's head for less drag and greater comfort whether swimming underwater or topside. Slick interior permits a very minimum of water adhesion and restriction.

1440 Free Flow w/Safety Glo. \$4.50

THE ACCORDION-FLEX

This popular snorkel with its short but adequate "accordion-flex" feature combines the advantages of an L-shaped mouthpiece with less "drag" when the snorkel is not in use. The Accordion-Flex with "Clear-Ease" incorporates a clearing unit installed in the recessed housing at the closed end of the mouthpiece. With this unit, residual water can be purged with each exhalation. Color black.

1437 Accordion-Flex w/Safety Glo. \$2.95

1439 Accordion-Flex "Clear Ease" w/Safety Glo. . . . \$3.95

THE HAITI

The Haiti, with its soft, flexible mouthpiece, one piece rubber elbow and tube with "Safety Glo" top, is the favorite of thousands of experienced divers.

1432 Haiti Snorkel w/Safety Glo. Black \$2.10

THE CRESSI DELFINO

The Cressi Delfino enjoys universal popularity. Features a one piece rubber elbow with soft mouthpiece, a rigid plastic center pipe and upper section of flexible rubber with "Safety Glo" top.

1430 Cressi Delfino w/Safety Glo. Black. \$1.95

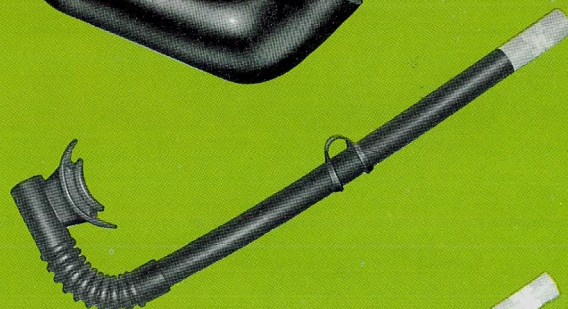
THE CORONADO

The new design Coronado, with soft rubber mouthpiece, one piece rubber elbow and tube with "Safety Glo" top, is a professional snorkel in all details at an "economy price."

1410 Coronado w/Safety Glo. Blue. \$1.75



THE FREE FLOW



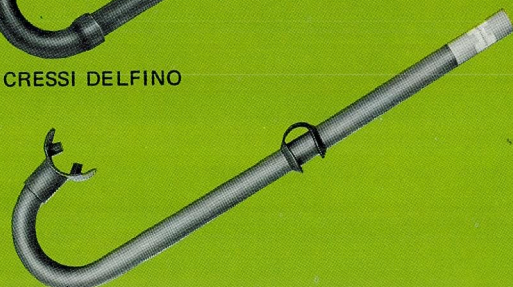
THE ACCORDION-FLEX



THE HAITI



THE CRESSI DELFINO



THE CORONADO



Scuba 10 Tank with New 10 year Warranty

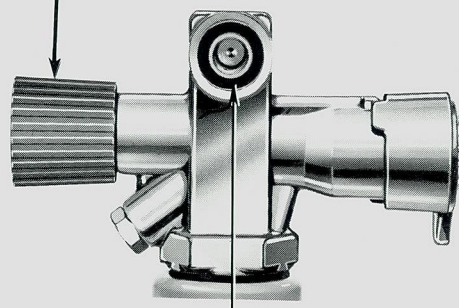
Due to recent improvements in the technique of manufacturing Healthways tanks—all cylinders are now guaranteed to pass the required DOT hydrostatic test for 10 years from the date of original test.

Along with manufacturing improvements, Healthways will continue to draw its tanks from the finest heat treated chrome molybdenum steel. .test them for Tensile, Crush and Hydrostat. .and check to see that they meet exacting DOT requirements as to wall thickness, threads, interior and exterior conditions. In addition to Galvanized Tanks, Healthways Safety Yellow Tanks are etch primed to insure an even bond . .primed again for added rust resistance. .then finished with a fine, smooth coat of yellow epoxy.

THE AIRFLO VALVE

All Healthways "J" tank-valve assemblies now feature new Airflo Valves. The Airflo Valve Port is threaded to receive the new Airflo Regulator and Airflo Tank Pressure Gauge as well as conventional yoke regulators and gauges. All "K" and "J" valves will also feature the new style sure-grip knob for easy turning even with wet, cold or gloved hands. Valves are 3/4", with "O" ring seals and straight threads to prevent damage during removal for inspection. No sealing compound is required. Valve is removed or resealed with wrench.

Grooved for sure grip, even with wet cold hands.



AIRFLO VALVE PORT, threaded to receive the new AIRFLO Regulator and AIRFLO Tank Pressure Gauge as well as conventional yoke regulators and gauges.



10 YEAR WARRANTY

All Healthways tank cylinders are guaranteed to pass the required DOT hydrostatic test for 10 years from the date of the original test. During the first 5 years after the original test, Healthways agrees to replace, without charge, any tank that fails to pass this test, provided failure to pass is not the fault of the user through misuse, mechanical damage or carelessness. Any tank failing this test after the fifth year, but before the end of the tenth, will be replaced at a pro-rated monthly charge for the period of use based on the current retail value, provided the cylinder(s) is returned postage prepaid to HEALTHWAYS, 5340 WEST 102ND STREET, LOS ANGELES, CALIFORNIA 90045. Included with each tank is a warranty certificate which must be filled out and returned by the purchaser to HEALTHWAYS, within 10 days of the purchase date as a condition precedent to the company's liability under this warranty.

TANK ASSEMBLIES

BARE TANKS

0115 3/4" 71.2 cu. ft.
Galvanized \$73.00
0116 3/4" 71.2 cu. ft. Safety
Yellow w/Tank Boot \$73.00

SINGLE TANKS WITH VALVES

0185 3/4" 71.2 cu. ft.
Galvanized w/"K" Valve \$92.00
0186 3/4" 71.2 cu. ft. Safety
Yellow w/"K" Valve and Tank Boot \$92.00
0195 3/4" 71.2 cu. ft. Galvanized
w/Airflo "J" Reserve Valve \$105.00
0196 3/4" cu. ft. Safety Yellow
w/Airflo "J" Reserve Valve
and Tank Boot \$105.00

TWIN TANKS WITH VALVE & PAK

0262 3/4" Twin 42 cu. ft.
Galvanized w/Airflo "J"
Reserve Valve and No. 1446
Twin Contour Scubapak \$195.00
0286 3/4" Twin 71.2 cu. ft.
Safety Yellow w/"K" Valve,
tank boots and No. 1446
Twin Contour Scubapak \$212.00
0295 3/4" Twin 71.2 cu. ft.
Galvanized w/Airflo "J"
Reserve Valve and No. 1446
Twin Contour Scubapak \$229.00
0296 3/4" Twin 71.2 cu. ft.
Safety Yellow w/Airflo "J" Reserve
Valve, Tank Boots and No. 1446
Twin Contour Scubapak \$229.00

TANK BOOT

Made of flexible, black, nonmarking polyethylene. Protects the bottom of the tank. Provides a convenient stand.
1448 Tank Boot. \$3.95
See price list for separate valve prices.

TANK ACCESSORIES



THE QUIK-CAM SCUBAPAK

Unique contoured back rest provides extreme lightness and durability with maximum form-fitting comfort. Tank weight is distributed between small of back and shoulder straps. It has 300 series stainless steel fasteners and tank band, with an aluminum cam lever handle and unique ball lock device to prevent slipping after pak is adjusted to tank.

1449 Quik-Cam Scubapak \$21.00



TWIN CONTOUR SCUBAPAK

Twin 71.2 tanks ride comfortably and in balance on the diver's back because the contoured back rest and harness design distribute the weight between the small of the back and the shoulder straps. Nylon cam webbing harness, safety release shoulder strap. Jet-O-Sen safety buckle. Galvanized twin band assembly.

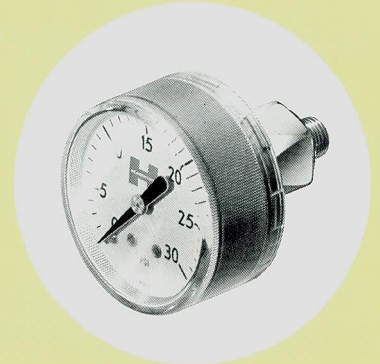
1446 Contour Scubapak \$26.00



THE SCUBAPAK HARNESS

Vinyl coated aluminum back rest. Adjustable stainless steel tank bands. Nylon cam webbing harness with safety release shoulder strap, special crotch strap. "Jet-O-Sen" positive quick release belt buckle.

1443 Scubapak Harness \$18.50



NEW AIRFLO TANK PRESSURE GAUGE

Screws into Airflo Valve Port. Has built-in self bleeder. Protected by a shock proof cover. Optional with the new Airflo Regulator - Cat. No. 1670-10
1610 Airflo Tank Pressure Gauge . . \$12.95



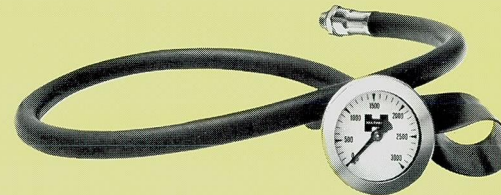
NEW WORLD-WIDE ADAPTER

Permits new Airflo Regulator and Airflo Gauge to be used on any existing tank-valve assembly.
1601 World-Wide Adapter. \$9.95



TANK PRESSURE GAUGE

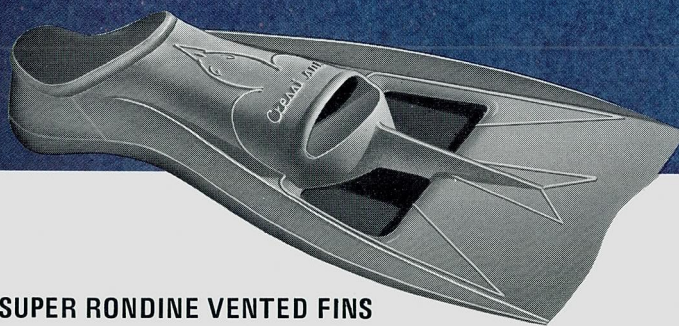
Measures the diver's air supply before and after diving. Equipped with bleeder valve. Protected by a neoprene, shock proof cover.
1614 Tank Pressure Gauge and Yoke. \$16.95



NEW SUBMERSIBLE TANK PRESSURE GAUGE

Large, easy-to-read dial tells diver exact air supply in tank at all times. Attaches to any regulator or valve. Case is chrome plated brass, with "O" rings. Completely pressure and water proof.
1620 Submersible Tank Pressure
Gauge \$29.50

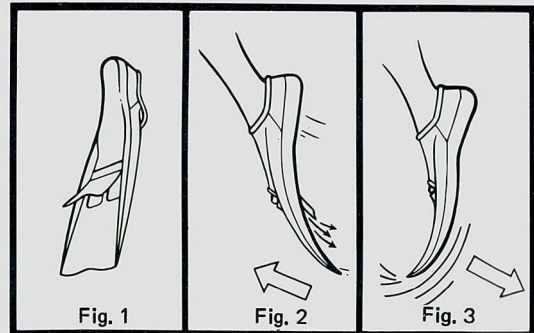
Effortless underwater walking



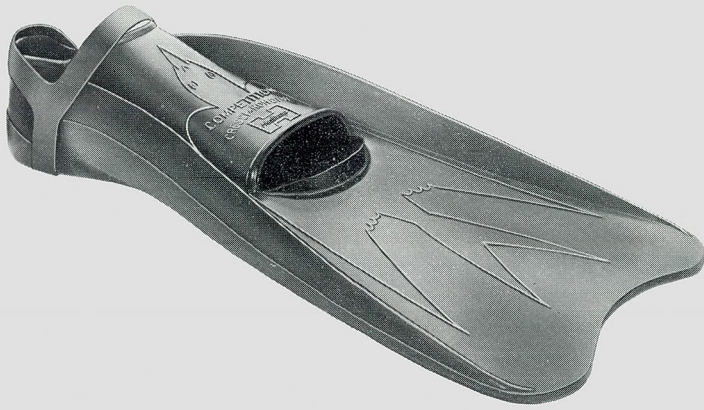
CRESSI SUPER RONDINE VENTED FINS

Most underwater activity is performed in a "walking" motion. Super Rondines make underwater movement effortless by cutting resistance and reducing leg strain. It's done by means of a hinged flap in the upper blade area (Fig. 1). Moving forward, vents open to cut resistance in negative blade area, while tip bends slightly to help support the diver (Fig. 2). On down or backward thrust, flap shuts automatically (Fig. 3), for full blade propulsion. Fins also provide effortless power and reduce leg strain when swimming with flutter kick. These *floating* fins are made of a blend of three rubber compounds...soft, flexible, full foot pockets...strong, resilient side rails for whipping action...and a stiff, spring-like blade tip. **FLOATING BLACK \$14.95**

MODEL	1380	1381	1382	1383	1384
SIZE	5-7	7-8½	8½-10	10-12	12-14



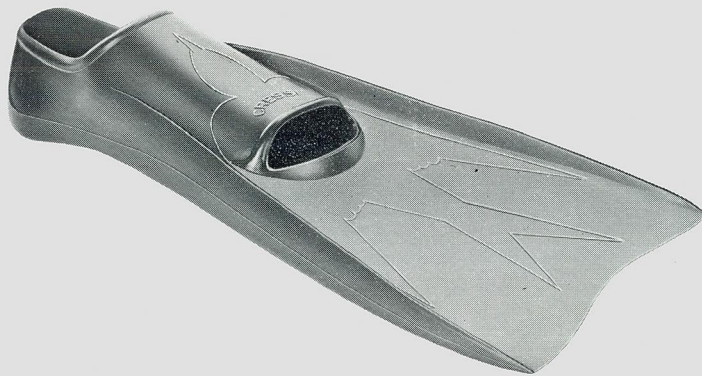
All Cressi Rondine Fins are covered by U. S. Patent No. 2737668



CRESSI COMPETITION FIN—With Fixe Palme Straps

The favorite of the finely conditioned diver who demands extra power through maximum blade thrust, and comfortable fitting for his longer dives. A unique blending of three rubber compounds – soft, flexible, foot pockets . . . strong, resilient rubber side rails along the foot pocket for whipping blade action . . . and still another blend for the lower side rails and fin blade. Because of their powerful blade action, it is recommended that Fixe Palme Straps be used for absolute security under any conditions.

- 1385 Competition. Black 7–9 \$16.50
- 1386 Competition. Black 9–11 \$16.50
- 1387 Competition. Black 11–13 \$17.50
- 1388 Competition. Black 13–16 \$17.50
- 1390 Fixe Palme Straps 7–11 \$2.50
- 1391 Fixe Palme Straps 9–16 \$2.50

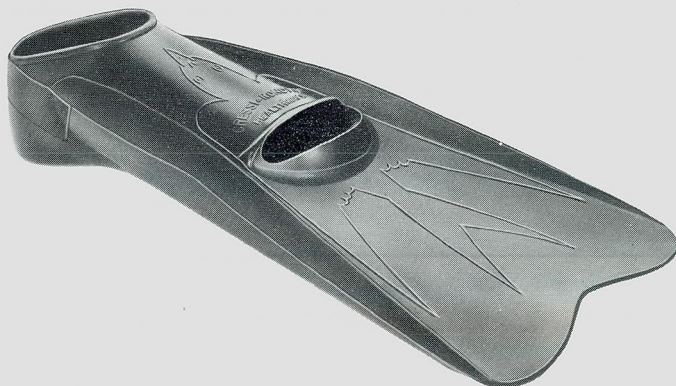


CRESSI GENOA AND MEDITERRANEAN –

Full Foot Pocket, Floating Fins

Made from two compounds of high quality floating rubber. A soft compound for stretch and comfort in the foot pocket. A stiff compound along the rails and tip for strong blade action. These fins also feature a high heel for a comfortable fit with or without boots. And blades with angled length and width which combine with extremely live rubber to provide spring-like blade action for effortless dives. Though comparatively light, these fins are strong and durable.

- 1365 Genoa. Black 5–7 \$11.50
- 1366 Genoa. Black 7–8½ \$11.50
- 1367 Genoa. Black 8½–10 \$12.50
- 1368 Genoa. Black 10–12 \$13.50
- 1369 Genoa. Black 12–14 \$13.50
- 1350 Mediterranean. Blue 5–7 \$11.50
- 1351 Mediterranean. Blue 7–8½ \$11.50
- 1352 Mediterranean. Blue 8½–10 \$12.50
- 1353 Mediterranean. Blue 10–12 \$13.50
- 1354 Mediterranean. Blue 12–14 \$13.50



CRESSI CORMORANT AND CORONADO FINs

Also made from two compounds of high quality rubber. One soft for a roomy, comfortable foot pocket. . . one stiff along the rails and center blade area for strong blade action. The Cormorant in black, long wearing, resilient rubber features a strong blade with powerful action.

The Coronado in blue, features a blade with fin tip rigidity for flexible power and full foot pocket comfort.

- 1340 Cormorant. Black 5–7 \$9.95
- 1341 Cormorant. Black 7–9 \$9.95
- 1342 Cormorant. Black 9–11 \$9.95
- 1343 Cormorant. Black 11–13 \$9.95
- 1320 Coronado. Blue 5–7 \$9.95
- 1321 Coronado. Blue 7–9 \$9.95
- 1322 Coronado. Blue 9–11 \$9.95
- 1323 Coronado. Blue 11–13 \$9.95



Dive masks that "feel right" on you

Divers vary widely in mask preference. Each seeks to find that mask which seals and feels best on him. For this reason, Healthways provides the widest selection of dive masks on the market. . . all with professional features.



THE CRESSI PINOCCHIO WIDE VISION

World's greatest mask for both free and scuba diving

No other mask so nearly approaches perfection in every detail of design, material and functional excellence. When scuba diving, see out with greater side and down vision...When free diving, because your face fits deeply into the mask, less air is lost to displacement and diving depth is increased up to 25%. Features: A double feather edge for a leak-proof seal on any size or shape face • A resilient, molded rubber nose pocket for easy, positive pressure compensation • A cleverly designed rubber slot molded into each side of the mask skirt to provide a firm, skip-proof housing for the molded, lively rubber head strap • A beautifully designed, plated steel band and slanted safety lens...in fact you have to see the new Pinocchio, feel it on your face and dive with it to really appreciate its true greatness.

1280 Pinocchio Wide Vision. Black \$12.95

1281 Pinocchio Wide Vision, w/"Clear-Ease". Black . . . \$13.95

Cressi "Clear-Ease" valve is positioned under nose for quick, positive clearing.

NEW CRESSI "CAT-EYE" LINCE MASK

Up to 75% less air displacement and wide sight field

The perfect answer to the serious free diver who also wants a compact, light-weight mask for scuba diving. Features: A close fit, "Cat-Eye" design that reduces internal volume up to 75% and cuts the mask clearing effort in half • An extra wide, double feathered edge for a leak-proof seal on any size or shape face • A resilient, molded rubber nose pocket for easy, positive pressure compensation • A rubber slot molded into each side of the mask skirt to provide a firm, slip-proof housing for the molded, lively rubber head strap • A non-rusting, durable plastic band.

1275 Lince. Black \$11.95

1276 Lince. Black w/"Clear Ease" Valve \$12.95



SEAVIEW WIDE VISION

Superior design of mask skirt provides full visibility without looking or feeling awkward, heavy or cumbersome. Perfectly compounded rubber, contoured depth and feathered edge cushions the face for a perfect, water-tight seal. Wide, lively rubber headstrap provides a feeling of comfortable balance on the face and head while diving—unique in this type of face plate. Stainless steel band, slanted safety glass for greater visibility.

1270 Sea View Wide Vision. Black \$7.50
1271 Sea View Wide Vision w/"Clear-Ease." Black \$9.50
 Clearing unit has extra large diaphragm for quick, positive water elimination.



THE STABILIZATOR

Feels stable and comfortably firm on the face when diving. Tapered, feather edge adheres to the facial contours for water-tight seal. Finger well merges smoothly into lip of the skirt. Prevents leakage when nose is pinched for pressure compensation. "Snap-Lock" stainless steel band, safety glass lens.

1260 Stabilizator. Black \$6.25
1261 Stabilizator. "Clear-Ease" Black \$7.25
 Provides easiest clearing through specially molded rubber diaphragm mounted on the mask lens.

1262 Stabilizator. Black w/plastic "Clear-Ease". \$7.50



THE SQUALE

The famous Squale with its classic simplicity of design, has for 15 years been one of the world's most popular diving masks. Beautifully molded in the finest most durable black rubber, this compact lightweight mask with unique feathered edge, fits and seals comfortably on both large and small faces. The short, soft mask skirt brings the face close to the face plate to provide excellent underwater visibility.

1225 Squale. Black \$7.50



THE COMPENSATOR

The original mask with molded finger well for pressure equalization. The mask skirt is precisely molded in the finest resilient rubber, tapered to a feathered edge to fit the contours of many faces. "Snap-Lock," stainless steel band, safety glass lens.

1250 Compensator. Blue \$5.50
1251 Compensator. Black \$5.50
1252 Compensator w/"Clear-Ease" Black \$5.95



THE PANORAMIQUE

A compact, streamlined design provides stability and balance on the face while diving. Slanted, wide angle lens brings the eyes closer to the face plate for undistorted vision over a wide range. Skirt is molded in finest quality rubber with tapered feather edge seal.

1216 Panoramique. Blue \$4.50
1218 Panoramique. Black \$4.50
1219 Panoramique w/"Clear-Ease" Black \$5.25



THE CORONADO

An adult size mask of professional design and quality. The mask skirt with tapered contouring, is made of a resilient rubber and provides comfortable fit and firm water-tight seal. "Snap-Lock" stainless steel band, safety glass lens.

1215 Coronado. Blue \$7.50



THE MEDUSA SNORKEL MASK

A full face mask designed by Cressi for shallow water viewing. The extra large safety glass lens provides panoramic underwater vision as the viewer cruises

on the surface. Features twin snorkels with double action valves, molded soft, comfortably fitting rubber skirt.

1274 Medusa Snorkel Mask. Blue \$7.50

For smaller sizes see pages 14 & 15

Confidence Builders

Healthways offers a complete line of dive gear designed especially to help youngsters learn the skills of skin diving faster and with more fun. Each mask, fin and snorkel features all of the quality and performance of professional equipment...yet is sized to fit so perfectly that the young diver gains immediate confidence, and can enjoy learning this new sport.

All Confidence Builder equipment is durable enough to last for years. The specially compounded bright blue rubber won't mark pools.



THE ESPADON CHAMPS

The popular Espadon Champ is a versatile mask; it fits the adult with a small face as well as women and juniors from ages 9 to 14. The soft, flexible skirt is contoured with a uniquely flared feather edge that cushions and seals perfectly; it provides the stability for deep diving. The Espadon Champ features a "Snap-Lock" stainless steel band, safety glass lens.

- 1210 Espadon Champ. Blue. \$4.25
- 1211 Espadon Champ. Black. \$4.25



THE RONDINE CHAMPS – FLOATING

Incorporate all the features of the professional models. They are light weight, comfortable fitting and provide lively blade action. Construction of high quality, long lasting rubber assures many seasons of use as well as a durable pass-along to younger family member. Youngsters experiencing swimming and snorkeling with Rondine Champs develop a preference for Cressi fins as they grow into and out of the wide range of cressi sizes.

- 1310 Rondine Champ. Blue 1-2 \$7.95
- 1311 Rondine Champ. Blue 2-3 \$7.95
- 1312 Rondine Champ. Blue 3-4 \$7.95
- 1313 Rondine Champ. Blue 4-5 \$7.95
- 1315 Rondine Champ. Black 1-2 \$7.95
- 1316 Rondine Champ. Black 2-3 \$7.95
- 1317 Rondine Champ. Black 3-4 \$7.95
- 1318 Rondine Champ. Black 4-5 \$7.95



THE OSTRICAS

The Ostricas are the only high quality dive masks of professional design and quality made to fit small children's faces. They feature soft, tapered skirts with comfortable cushion-like seal, safety glass lens and stainless steel bands.

- 1205 Ostrica Bantam. Blue. For ages to 10 . . \$3.95
- 1206 Ostrica Champ. Blue. For ages 8-16 . . \$4.25



AQUA CHAMP SWIM MASKS

These well fitting masks are molded in high quality, blue rubber with clear styrene lens.

- 1201 Aqua Champ Junior. Blue.
For ages to 7 \$2.25
- 1202 Aqua Champ Senior. Blue
For ages 8-16 \$2.25



GOGGLES

Sea Dive Goggle is the choice of thousands of American teenagers who train many hours each day in chlorinated pools and then go out and break world records in the swimming events. The Sea Dive is a professionally designed goggle with soft skirt, feather edge seals, steel rims and safety glass lens.

- 1109 Sea Dive Goggles \$4.95
- Aqua Pro Goggles have enjoyed many years of popularity with swimmers. They are designed for comfort and safety with clear plastic lens and soft flexible rubber skirt for a comfortable seal.
- 1107 Aqua Pro Goggles \$3.25



THE CORONADO SWIM SET

A combination set attractively packaged, consisting of Coronado fins, Coronado Mask, and Coronado Snorkel, each professional in design and quality, all made of matching blue. Order by foot size.

- 1145 Coronado Set-Foot sizes 5-7 \$15.50
- 1146 Coronado Set-Foot sizes 7-9 \$15.50
- 1147 Coronado Set-Foot sizes 9-11 \$15.50

Any combination of mask, fins and snorkel can be gift packaged on special order.



**Make the
... with**

HEALTHWAYS NEW WET SUIT DESIGN

In choosing a wet suit, the most important characteristic to consider is the snug, comfortable fit. Healthways suits are made from a pattern designed to blend the garment to the body contours. When you move, the suit moves with you in one motion. Healthways also offers the widest range of sizes for the greatest number of divers. Special features:

NYLO-FOAM. Perfected technique for securely bonding a 4-way stretch nylon lining to foam neoprene for added strength and tear resistance. The foam neoprene, with its millions of tiny air bubbles insulates the body conserving energy. . . adds safety to any dive as its buoyancy characteristic simulates flotation, holding a swimmer chest high at the surface. All suits have nylon lining throughout, permitting the diver to slip into and out of his suit more quickly and easily.

TROUBLE-FREE ZIPPERS. Positioned on the inside of the wrists and ankles for greater ease of zipping. Made of heavy duty, nickel-silver, with nylo-foam liners and double stitched seams throughout.

SHIRTS FEATURE: High inset collars, sealskin inside, nylon outside. Inset gussets at armpits for extra comfort and freedom of movement. Contoured fit at shoulder, chest, back, waist and forearm. Twist lock fasteners on the beaver tail.

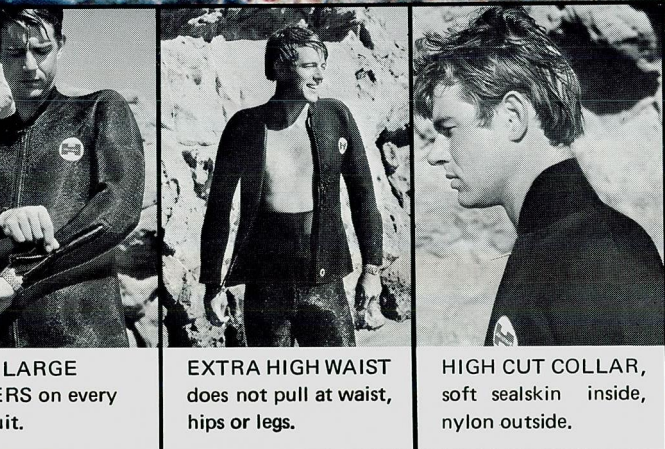
PANTS FEATURE: Legs fit high at the crotch. Contoured snugness at the thigh. Fully contoured at knee and calf of leg. Extra high waist. No stress or pull at waist, hips or legs. Full, comfortable crotch with special liner for comfort and strength.

ALL HEALTHWAYS WET SUITS FEATURE SEWN SEAMS

CUSTOM TEX-SKIN 5 ZIPPER SUITS, SHIRT AND PANTS, NYLON LINED

Textured surface for greater scuff resistance and greater resilience for comfort and freedom of movement.

	3/16" Tex-Skin	1/4" Tex-Skin	
0530 Small	\$74.00	0550 Small	\$82.00
0531 Small-Long	\$74.00	0551 Small-Long	\$82.00
0532 Medium	\$74.00	0552 Medium	\$82.00
0533 Medium-Lge.	\$74.00	0553 Medium-Lge.	\$82.00
0534 Large	\$74.00	0554 Large	\$82.00
0535 X-Large	\$74.00	0555 X-Large	\$82.00



LARGE ZIPPERS on every zipper.

EXTRA HIGH WAIST does not pull at waist, hips or legs.

HIGH CUT COLLAR, soft sealskin inside, nylon outside.

dive scene 12 months long "action-oriented" wet suits

CUSTOM SEALSKIN 5 ZIPPER SUITS, SHIRT AND PANTS, NYLON LINED

Slick skin-like surface with equal insulation quality to the Tex-Skin.

3/16" Sealskin		1/4" Sealskin	
0510 Small	\$69.00	0520 Small	\$77.00
0511 Small-Long	\$69.00	0521 Small-Long	\$77.00
0512 Medium	\$69.00	0522 Medium	\$77.00
0513 Med.-Large	\$69.00	0523 Med.-Large	\$77.00
0514 Large	\$69.00	0524 Large	\$77.00
0515 X-Large	\$69.00	0525 X-Large	\$77.00

CORONADO SEALSKIN "NYLO-FOAM" 5 ZIPPER SUITS, SHIRT AND PANTS, NYLON LINED

Same features as Custom Wet Suits, but with nickel-plated brass zippers and snap fasteners on the beaver tail.

3/16" Coronado Sealskin			
0502 Small	\$62.00	0504 Med.-Large	\$62.00
0503 Medium	\$62.00	0505 Large	\$62.00

SKI JACKETS

Ideal jacket for skin diver, surfer or water skier. Full contour design. Heavy duty brass zipper. Full length crotch strap. Double duty snap patch.

3/16" Black. Skin 2 Sides		1/8" Black. Nylon Lined	
0600 X-Small	\$28.00	0620 X-Small	\$28.00
0601 Small	\$28.00	0621 Small	\$28.00
0602 Medium	\$28.00	0622 Medium	\$28.00
0603 Large	\$28.00	0623 Large	\$28.00

SURFER SUITS, NYLON LINED, ROLLED EDGES

Comfortable, form-fitting, one-piece construction. Provides complete freedom of movement. Reinforced shoulder snaps for easy entry and removal.

1/8" Black Neoprene			
0640 X-Small	\$28.00	0642 Medium	\$28.00
0641 Small	\$28.00	0643 Large	\$28.00

SEALSKIN SUIT



SKI JACKET



SURFER SUIT

SIZE CHART

CUSTOM WET SUITS – SKI JACKETS – SURFER SUITS

	Chest	Waist	Weight	Height
Extra Small	34"-35"	27"-29"	125-135	5'6"-5'9"
Small	36"-37"	29"-31"	132-150	5'7"-5'10"
Small-Long	36"-37"	30"-32"	142-160	5'11"-6'2"
Medium	38"-39"	31"-34"	147-172	5'7"-5'11"
Medium-Large	40"-42"	34"-37"	170-189	5'8"-5'11"
Large	42"-44"	36"-39"	187-206	5'8"-5'11"
X-Large	44"-46"	39"-43"	205-228	5'9"-6'

CORONADO WET SUITS

	Chest	Waist	Weight	Height
Small	36"-37"	29"-31"	132-150	5'7"-5'10"
Medium	38"-39"	31"-34"	147-172	5'7"-5'11"
Medium-Large	40"-42"	34"-37"	170-189	5'8"-5'11"
Large	42"-44"	36"-39"	187-206	5'8"-6'



Diving Accessories



TEX-SKIN HOOD



SEALSKIN HOOD

DIVING HOODS – NYLON LINED

Contoured to fit snugly at the dome, back of the head, and neck. Full contoured chin for extra protection.

3/16" Tex-Skin Hood w/Contoured Chin
0734...Medium-Small 0735...Medium-Large... \$9.00

1/4" Tex-Skin Hood w/Contoured Chin
0736...Medium-Small 0737...Medium-Large... \$10.50

3/16" Sealskin Hood w/Contoured Chin
0732...Medium-Small 0733...Medium-Large... \$9.00



HARD-SOLE BOOTS



3-FINGER MITTS



5-FINGER GLOVE

DIVING BOOTS – NYLON LINED

3/16" Sealskin Soft Sole Boots
0738...5-7 0739...7-9 0740...9-11... \$11.00 pr.

3/16" Sealskin Hard Sole Boots
0744...5-7 0745...7-9 0746...9-11... \$12.50 pr.

1/4" Tex-Skin Hard Sole Boots
0741...5-7 0742...7-9 0743...9-11... \$14.00 pr.

DIVING MITTS AND GLOVES – NYLON LINED

Provide full finger dexterity for any type of underwater activity. Made of foam neoprene with extra high cut wrist for greater warmth.

3/16" Sealskin 3-Finger Mitt
0750...Small 0751...Medium 0752...Large \$8.50 pr.

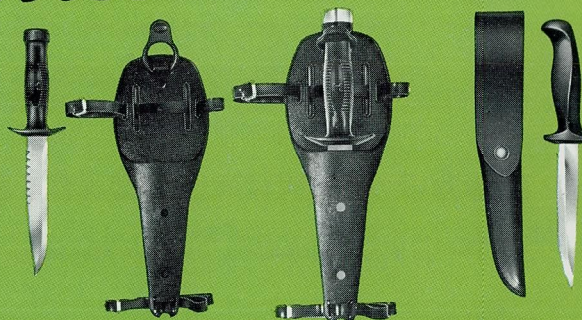
3/16" Sealskin 5-Finger Gloves
0753...Small 0754...Medium 0755...Large \$10.00 pr.

ACCESSORIES

1791 Rubber Dust... \$.90
1795 Nylo-Foam Repair Kit... \$2.50
1798 Black Magic Cement... \$1.50



RUBBER DUST



COMPETITION W/HEAVY DUTY KNIFE BALBOA

COMPETITION KNIFE & SHEATH

Made of Series 300 stainless steel, with one sharp cutting and one serrated edge, guaranteed not to rust. Sure-grip handle with large, flat beveled head, is molded in high impact polyallomer. Hammers any hard surface without chipping. Feels balanced in the hand. Has great strength for prying, hacking, digging. Contoured vinyl sheath, worn on leg or belt, has large rubber retainer tag for easy grip, maximum security.

1998 Competition Knife & Sheath... \$9.95
1999 Competition Knife w/Stainless Steel Head & Sheath... \$12.50
(For those who prefer the heavier metal head)

BALBOA KNIFE & SHEATH

Series 300 stainless steel. Guaranteed not to rust.
1995 Balboa Knife & Sheath... \$7.50



COMPETITION 200 ft. DEPTH GAUGE

Accurate, leakproof, Bourdon tube gauge is double sealed in compact, stainless steel case. Pressure chamber tested for accuracy before leaving factory.
1966 Competition 200 ft. Depth Gauge... \$13.95



BALBOA 250 ft. DEPTH GAUGE

Simple, fool-proof gauge with no mechanical parts. Works on the water column principle for accuracy.
1965 Balboa 250 ft. Depth Gauge... \$5.95



"Complete Study of Skindiving"

Author, Ray Hoglund, presents a comprehensive, easy-to-read text on basic skin diving, including the physics and physiology of scuba diving and fundamental safety procedures.

1911... \$2.95



COMPETITION



SCUBA VEST

COMPETITION FLOTATION JACKET

Designed to strict military specs. Constructed of high tensile strength orange nylon. Heavy duty brass zipper. Foam neoprene lining inside collar prevents chafing. Oral inflation tube closes automatically. Large, threaded, 16 gram cartridge screws into snagproof, leak proof firing mechanism. Vests are factory inspected and tested for strength of seams and air retention.

- 1982 Competition Flotation Jacket w/one detonator and cartridge \$28.00
- 1990 Competition Flotation Jacket w/twin detonators and cartridges \$40.00
- 1982-01 16 gram CO2 Cartridge for Nos. 1982 and 1990 \$1.00

SCUBA VEST FLOTATION JACKET

A proven floatation device made of specially prepared orange colored, tight weave cotton laminated with heavy vinyl plastic waterproofing. Can be inflated through oral inflation tube or by "squeeze grip" detonator that allows easy removal and replacement of the 12 gram CO2 cartridge. Vests are factory inspected and tested for strength of seams and air retention.

- 1980 Scuba Vest \$18.95
- 1983 12 gram CO2 Cartridge for No. 1980 Package of 6 \$ 1.80
- 1980-02 Detonator for No. 1980 \$ 3.50



THE "JET-O-SEN" 12 lb. WEIGHT BELT

Truly a positive quick release safety buckle. Made of extra heavy, smoothly finished, stainless steel wire. Holds securely in the closed position. Releases quickly at diver's discretion. Includes four 3 lb. lead weights, 2" belt of cam webbing nylon and "Jet-O-Sen" safety buckle.

- 1942 "Jet-O-Sen" 12 lb. Weight Belt \$16.50
- 1942-02 "Jet-O-Sen" Buckle and Belt only \$3.95
- 1942-04 "Jet-O-Sen" Safety Buckle \$1.50

LEAD WEIGHTS

- 1943-01 2 lb. Lead Weight \$2.25
- 1944-01 3 lb. Lead Weight \$3.35



1970 Big Jim Divers Flag/Buoy.. \$3.50

SKI DOOTER

Constructed of special marine plywood and attractively finished in colors with white racing stripes. This skimmer board provides a smooth ride on receding ocean or lake waves as they race across the sand. Same balance and skills are required as for riding a surfboard.

- 2101 24" round x 1/2" . . . \$4.95
- 2102 2' x 3' x 1/2" \$7.95



1915 Nose Clips . . . \$.50



1928 Ear Stopples . . \$.50

(NOT FOR SCUBA DIVING)

Speargun Accessories



METRIC THREAD SPEARHEADS

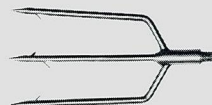
1501-01 Single Barb Head \$1



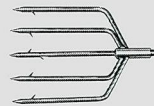
1501-02 Double Barb Head . . . \$2



1501-03 Tri-Point Spearhead . . \$1



1501-05 3-Prong Spearhead . . . \$1



1501-06 5-Prong Spearhead . . . \$2



AMERICAN THREAD SPEARHEADS

1500-04 Stainless Steel

1-Barb Spearhead \$2



1500-07 Stainless Steel

2-Barb Spearhead \$5



ADAPTERS FOR SPEARHEADS

1503-01 Adapter Sleeve. Permits Metric Thread Spearheads to be used on a Metric Threaded Spearshaft. . . . \$2

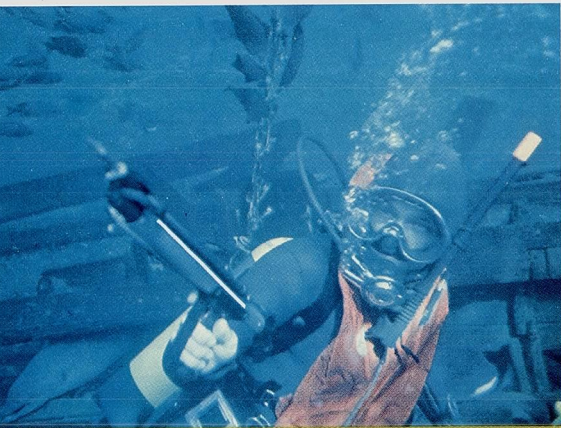


1503-02 Spearhead Adapter. Converts Metric to American Thread . . . \$2



1503-03 Detachable Spearhead Adapter - Metric Thread . . . \$5

Replacement spearshafts and power slings are available for each model speargun shown on the following pages. They may be ordered by using the four-digit speargun number and adding "04" for spearshaft and "08" for power sling. Example: Healthways Bantam - No. 1507 Replacement Spearshaft - No. 1507-04 Replacement Power Sling - No. 1507-08



Make your first shot your



SPORTSMAN DELUXE



SPORTSMAN STANDARD



SPORTSMAN COMPACT



HEALTHWAYS BANTAM

Sportsman Spearguns

These high quality, economy priced guns offer a complete range of power, accuracy and performance. Features include a 5/16" diameter steel shaft. Sleek, aluminum-finish barrel. Expertly designed hand grip. Muzzle for latex rubber power slings. Lever type, thumb operated safety and molded rubber line release. Star trigger release mechanism.

1524 SPORTSMAN DELUXE. . . \$32.00

48" shaft, 3 notches, 2 rubber slings and 2 barb spearhead. Special center-balanced handle for maneuverability and steadier sighting.

1523 SPORTSMAN STANDARD \$26.00

44" shaft, 2 notches, 2 power slings and 2 barb spearhead.

1522 SPORTSMAN JUNIOR. . . \$21.00

40" shaft, 2 notches, 1 power sling and 1 barb spearhead.

1521 SPORTSMAN COMPACT. . \$15.95

25" shaft, 2 notches, 1 power sling and 1 barb spearhead.

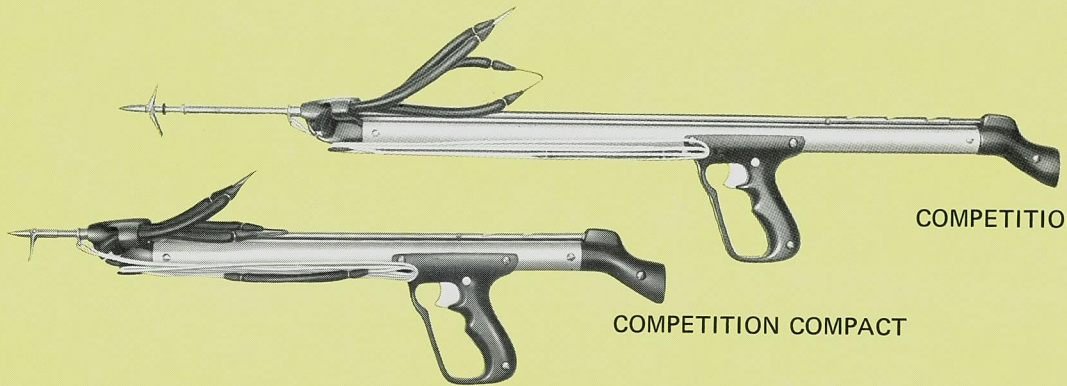
1507 HEALTHWAYS BANTAM. \$11.95

Light, 29", 1/4" diameter shaft, 1 threaded type power sling, tripoint head and thumb safety.



Unique "Star Trigger Release" for more accurate spearfishing. Release is a star shaped ratchet which carries tension of stretched elastic bands. There is no increase in trigger pull when adding power slings. Illustration shows how release moves with tension, eliminating tight trigger-squeeze wobble or quick release jerking action.

best with a Healthways speargun



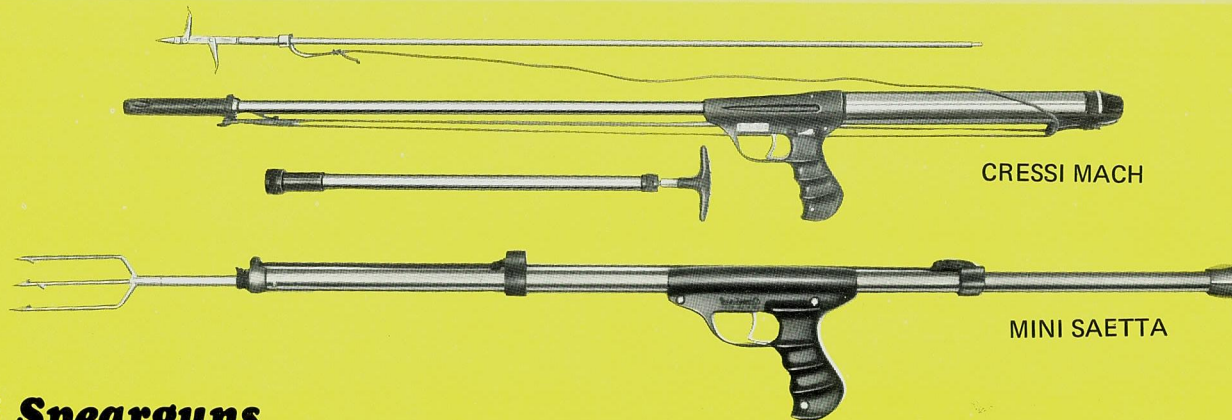
Competition Spearguns

They provide the power, accuracy, balance and dependability required to make them the most versatile spearguns on the market. Features include stainless steel shaft, spearhead and working parts. Surgical latex rubber slings. One piece, 1 1/4" aluminum tubing. Thumb operated safety. Shock cord line, side mounted line

release. A muzzle design that holds power slings firmly in place. Contoured, center-balanced hand grip and pistol grip butt for steady sighting.

1544 COMPETITION CUSTOM. \$36.00
36" long, 5/16" diameter shaft with 3 notches, 2 slings and 2 barb spearhead. Provides the killing power for the big

ones, yet is perfectly balanced and maneuverable for smaller, more elusive fish.
1543 COMPETITION COMPACT \$31.00
24" long, 5/16" diameter shaft with 2 notches, 2 slings and 1 barb spearhead. Ideal for fresh water spearfishing or for hunting in sea water around rocks, keels or other obstructions.



Cressi Spearguns

Unmatched for distinctive beauty and efficiency. Each its own type of underwater weapon. Each for a different type of underwater hunting.

1550 MACH 1.1. .37" shaft . . . \$75.00

1555 MACH 0.9. .24" shaft . . . \$60.00

Lightweight, high powered, compressed air spearguns, with unique shaft propulsion and air cylinder seals that maintain

a constant 250 PSI. Have normal year's air supply before recharging. Power can be increased by pumping more pressure into cylinder. Variable power is pre-set by diver before entering water. Spearshaft is inserted into air tight barrel until trigger is engaged, and is then ready for firing. Also has thumb operated safety. Special shock absorbing propulsion mechanism.

Center grip handle and rear counterweight for perfect balance.

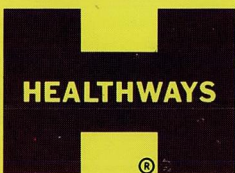
1532 MINI SAETTA \$23.00

A beautifully designed, spring-powered gun with accuracy and power for a wide range of spearfishing activities. Contoured center grip provides fine balance for exceptional accuracy and easy maneuvering of 27" shaft.



Look for Healthways exciting new packages and displays...loaded with helpful product information. Healthways is your one source for a complete line of professional sporting goods:

- SKIN AND SCUBA DIVING EQUIPMENT
- CO2 POWERED RIFLES AND PISTOLS
- EXERCISE EQUIPMENT



SUBSIDIARY OF
ELDON INDUSTRIES, INC.

GENERAL OFFICE, MAIN FACTORY AND WAREHOUSE
P. O. Box 45055 5340 W. 102nd St., Los Angeles, Calif. 90045
(213) 776-4370
CANADIAN OFFICE AND WAREHOUSE
1315 Lawrence Ave. East, Don Mills, Ontario, Canada
(416) 447-8536