



Photo: Florida Cypress Gardens Assn.



1962

DIVING

CATALOG



SPORTSWAYS, INC.

7701 E. COMPTON BLVD. • PARAMOUNT, CALIF.

*"THE WORLD'S
MOST ADVANCED
DIVING EQUIPMENT"*



An Inside Look at the World's Most

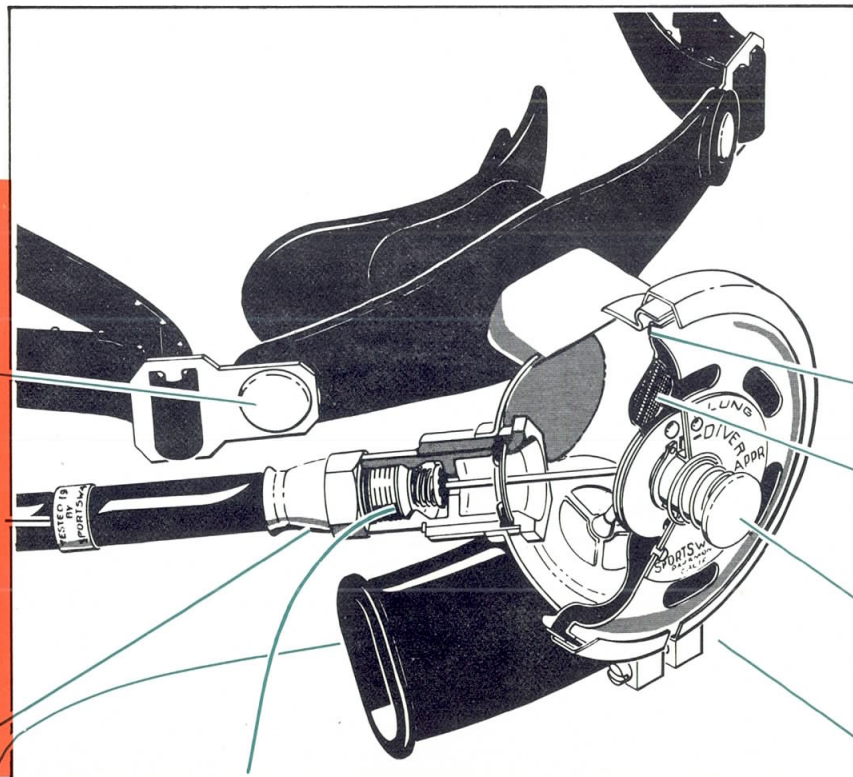


New Nylon Safety Snaps Eliminate Corrosion Problems. Instant Release.

Sportsways, the **Only Manufacturer** that Tests Regulator Hoses Before Assembly. Each Hose is Individually Tested for Strength and Flow. 1. Normal Pressure, 120 P.S.I. 2. Working Pressure 400 P.S.I. 3. Test Pressure, 800 P.S.I. 4. Burst Pressure, 2,200 P.S.I. Nylon Braided, Neoprene-Encased. The Greatest Safety Factor in Field by Far. Tested and Dated. The Tag is Your Assurance of Reliability.

Exclusive WATERLUNG Swivel with Teflon Bearing. 1. Eliminates Friction. 2. Eliminates Lubrication. 3. Retains Smooth Swivel Action for Life of the Unit.

Exhalation Tee. Light, Pliable for Maximum Safety, Minimum Encumbrance. Compact, Pliable Design Eliminates Possibility of Accidents Prevalent with Metal Exhalation Tees.



Sportsways Exclusive INTER-LOCK Diaphragm Seal. The only Fool-proof Sealing Design.

Neoprene reinforced Nylon Diaphragm with Stainless Steel Diaphragm Plates. Burst Pressure, 400 P.S.I. 10 Times the Strength of Unreinforced Diaphragms Found in Any Other Underwater Breathing Apparatus.

Safety Extended Manual Clearing Button. Second Stage can be Cleared Instantly even when Hands are Occupied.

A WATERLUNG PLUS! ... The New WATERLUNG Rocker Valve Design Delivers a Minimum Flow of 18 Cu. Ft. per Minute, Far Above the Maximum Requirements Under Any Conditions, at Any Depth. The U. S. Navy Diving Manual, Navships 250-538, Establishes Maximum Free Air Requirements at 170 Litres, the Equivalent of 6.003 Cu. Ft. per Minute.

The Most Efficient Second Stage Ever: 1. Lightest Second Stage in the Field. 2. Least Amount of Drag. 3. Ultimate in Design Simplicity. 4. No Adjustment Necessary in Second Stage—Another Sportsways First.

Warranty

Every Sportsways WATERLUNG regulator is tested thoroughly before shipment and recorded at the Sportsways factory. Each WATERLUNG is packaged with a Warranty Card to be completed upon purchase and then registered at Sportsways. This is your complete assurance of thorough testing and quality of materials and workmanship. The factory registration validates the Guarantee and protects you in the event of loss or theft.

All Waterlungs Use "O" Ring Seals All Outlets and Connections. The Only System that Meets Military Specifications MILP-5514 for Pressure Seals.

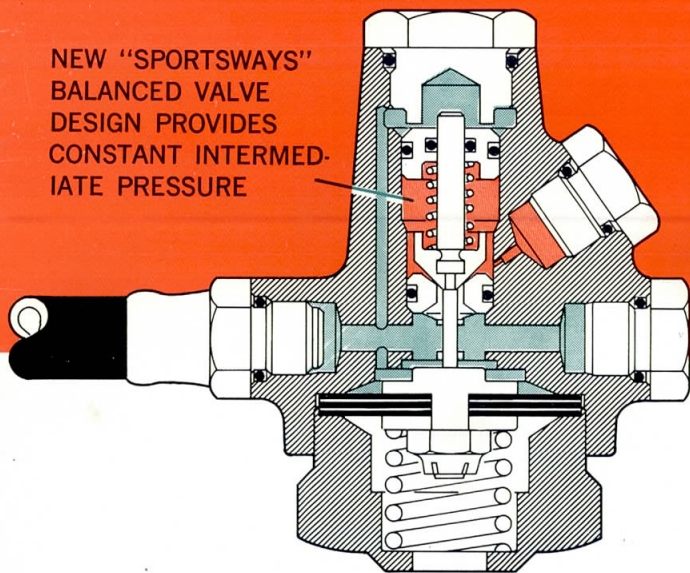
Respected Underwater Breathing Apparatus

SPORTSWAYS
WATERLUNG

NEW...Ultra Compact First Stage Design

"MASTER DIVER" First Stage with Balanced Valve

NEW "SPORTSWAYS" BALANCED VALVE DESIGN PROVIDES CONSTANT INTERMEDIATE PRESSURE



HIGH PRESSURE 
LOW PRESSURE 

Standard "WATERLUNG" First Stage

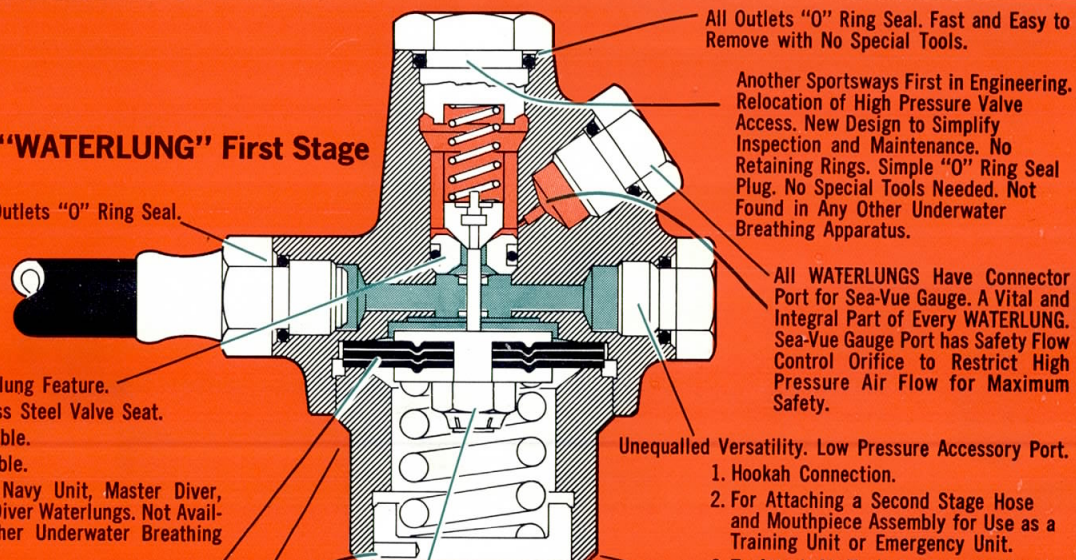
All Outlets "O" Ring Seal.

Exclusive Waterlung Feature.
1. Stainless Steel Valve Seat.
2. Removable.
3. Reversible.

Found Only in Navy Unit, Master Diver, Dual Air, Sport Diver Waterlungs. Not Available in Any Other Underwater Breathing Apparatus.

Intermediate Pressure Diaphragm.
1. Neoprene Reinforced Diaphragm.
2. 20 Times Stronger.

Because of Sportsways' Exclusive Facilities, Waterlungs Are Plated Inside and Out to Prevent Internal as Well as External Corrosion. Triple Plated (Copper, Nickel and Chrome) for Maximum Safety, Durability and Appearance.



All Outlets "O" Ring Seal. Fast and Easy to Remove with No Special Tools.

Another Sportsways First in Engineering. Relocation of High Pressure Valve Access. New Design to Simplify Inspection and Maintenance. No Retaining Rings. Simple "O" Ring Seal Plug. No Special Tools Needed. Not Found in Any Other Underwater Breathing Apparatus.

All WATERLUNGS Have Connector Port for Sea-Vue Gauge. A Vital and Integral Part of Every WATERLUNG. Sea-Vue Gauge Port has Safety Flow Control Orifice to Restrict High Pressure Air Flow for Maximum Safety.

Unequaled Versatility. Low Pressure Accessory Port.
1. Hookah Connection.
2. For Attaching a Second Stage Hose and Mouthpiece Assembly for Use as a Training Unit or Emergency Unit.
3. To Attach Air Tools for Salvage Diving.

Diaphragm Plate Secured with Safety Lock Nut.

Exclusive Waterlung Design. All Adjusting Screws Locked with Unique Nylon Insert.

Foolproof Safety Valve Stainless Steel Body. Pre-set and Tested at the Factory.

 HIGH PRESSURE
 LOW PRESSURE

Single Solid Navy Brass Forging. Maximum Safety Strength Durability.



SPORTSWAYS, INC.

"THE WORLD'S MOST ADVANCED DIVING EQUIPMENT"

7701 E. COMPTON BLVD. • PARAMOUNT, CALIF.

The Celebrated "NAVY UNIT"

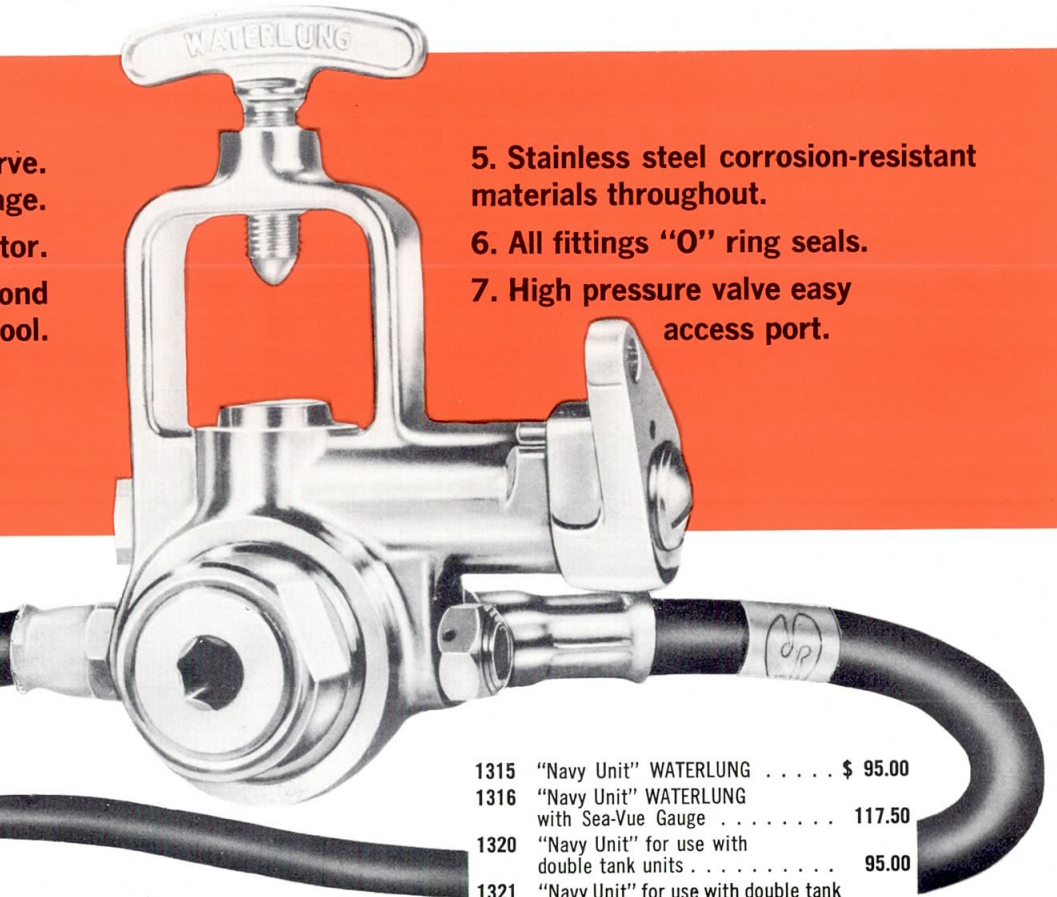


Another Sportsways FIRST

The only regulator ever made incorporating an integral 300 P.S.I. spring-loaded constant reserve. Provides maximum safety inherent in a regulator for use with tank with any type valve.

1. Integral 300 P.S.I. spring loaded constant reserve.
2. Solid single forging first stage.
3. Sea-Vue Gauge connector.
4. Low pressure port for Hookah use, auxiliary second stage, or air tool.

5. Stainless steel corrosion-resistant materials throughout.
6. All fittings "O" ring seals.
7. High pressure valve easy access port.



- 1320-2 Reserve arm, to convert 1315 and 1316 for use with double tank units 3.50
- 1317 "Navy Unit," first stage only 60.00
- 1320-22 Pull rod for use with 1320 Navy Unit and SK-2 double tank assemblies 1.25

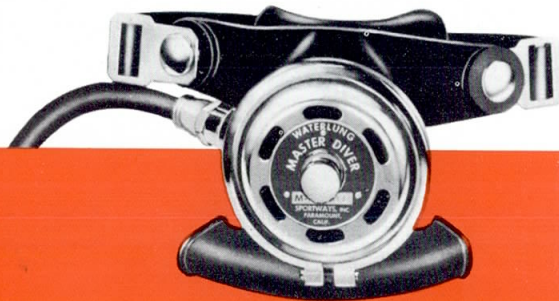
- 1315 "Navy Unit" WATERLUNG \$ 95.00
- 1316 "Navy Unit" WATERLUNG with Sea-Vue Gauge 117.50
- 1320 "Navy Unit" for use with double tank units 95.00
- 1321 "Navy Unit" for use with double tank units with Sea-Vue Gauge 117.50

"MASTER DIVER" WATERLUNG



NEW! First Stage Balance Valve

For those divers who prefer a first stage with a balance valve, the Master Diver now incorporates this new feature. In an ultra-compact design, the single forging makes the first stage almost an integral part of the valve. The first stage balance valve releases a constant intermediate pressure.



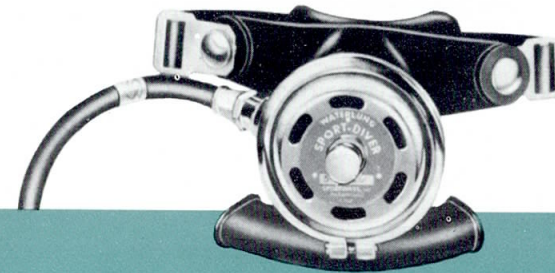
1. Solid single first stage forging with integral yoke and compact design.
2. First stage with balance valve.
3. Sea-Vue Gauge connector.
4. Low pressure port for Hookah use, auxiliary second stage on air tool.
5. Stainless steel corrosion resistant materials throughout.
6. All fittings "O" ring seals.
7. High pressure valve easy access port.



1310 "Master Diver" WATERLUNG \$70.00
 1311 "Master Diver" WATERLUNG
 with Sea-Vue Gauge 92.50

"SPORT DIVER" WATERLUNG

The world's most popular regulator. New, improved design now incorporates single forging in first stage and low pressure port.



1. First stage forging with swivel yoke.
2. Sea-Vue Gauge connector.
3. Low-pressure port for Hookah use, auxiliary second stage or air tool.
4. Stainless steel corrosion-resistant materials throughout.
5. High pressure valve easy access port.
6. All fittings "O" ring seals.
7. Advanced WATERLUNG second stage.



1301 "Sport Diver"
 WATERLUNG . . \$49.95
 1302 "Sport Diver"
 WATERLUNG with
 Sea-Vue Gauge . 72.50



SPORTSWAYS, INC.

"THE WORLD'S MOST ADVANCED DIVING EQUIPMENT"

7701 E. COMPTON BLVD. • PARAMOUNT, CALIF.

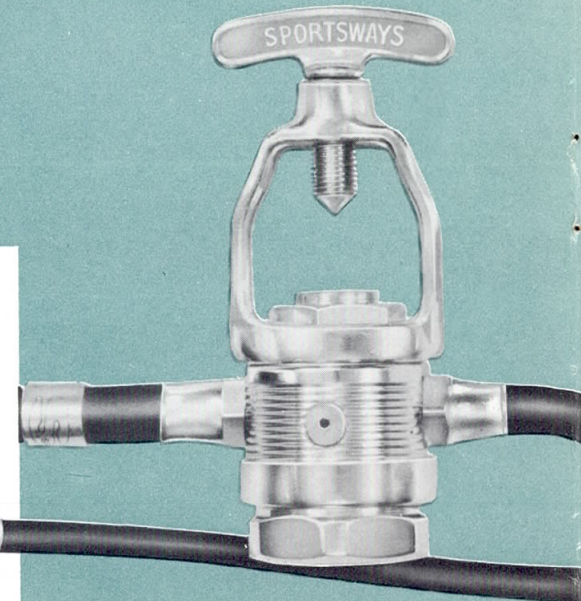
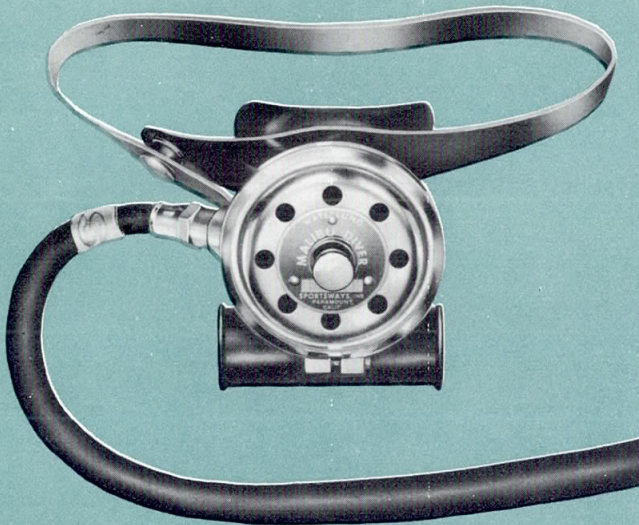
"MALIBU DIVER" WATERLUNG

The newest WATERLUNG featuring incomparable WATERLUNG performance and workmanship at an economy price.

1. Compact, machined first stage.
2. Sea-Vue Gauge connector.
3. All fittings "O" ring seal.
4. WATERLUNG second stage with lightweight, pliable plastic exhalation tee.

1330 "Malibu Diver" WATERLUNG . \$35.95

1331 "Malibu Diver" WATERLUNG
with Sea-Vue Gauge 58.50



"DUAL AIR" WATERLUNG

The furthest advanced, easiest breathing, most reliable two hose, two stage regulator ever manufactured!

1. Single solid first stage forging.
2. Sea-Vue Gauge connector.
3. Low pressure port for Hookah use, auxiliary second stage or air tool.
4. Stainless steel corrosion-resistant materials throughout.
5. Second stage housing encases specially enlarged diaphragm for maximum sensitivity.
6. Advanced rocker valve and Venturi action design.

1325 "Dual Air" WATERLUNG \$75.00

1326 "Dual Air" WATERLUNG with Sea-Vue Gauge . 97.50



"SEA-VUE" GAUGE



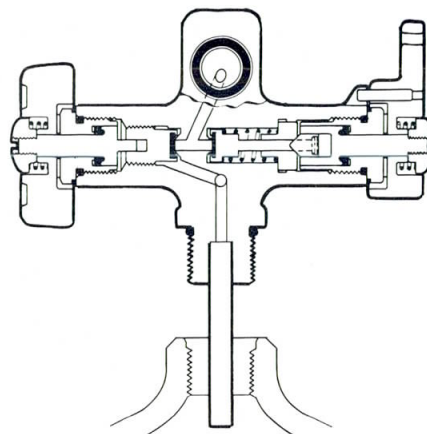
The SEA-VUE GAUGE is the most vital and most important instrument ever designed for safety in diving. The equivalent of a fuel gauge in flying.



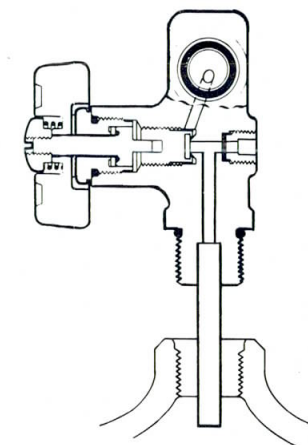
1. Accurately indicates your remaining air supply at all times.
2. Allows you to plan your dive minute to minute.
3. No need to demount regulator to check tank pressure.
4. Waterproof, pressure proof construction.
5. "O" ring seals.
6. Luminous dial.
7. Chrome plated Navy brass case and bezel.
8. Stainless steel braided hose encased in neoprene.
9. Each hose tested at 6,000 P.S.I.

1401 Sea-Vue Pressure Gauge \$24.95

SPORTSWAYS TANK VALVES



SJ—CONSTANT RESERVE VALVE (300 P.S.I.)



SK—SHUT-OFF VALVE

SPORTSWAYS TANK VALVES ARE THE ONLY COMPLETE VALVE LINE DESIGNED SPECIFICALLY FOR DIVING!

SPORTSWAYS EXCLUSIVE:

Sportsways valve to tank connection utilizes a 3/4" "O" ring straight thread connection, the only system that meets military specifications (MIL P-5514).

Engineered to present a practical, reliable valve for maximum utility . . . many exclusive advantages:

- 1) **New, large, easy-to-turn Shut off Knob on the side** . . . makes obsolete all existing diving and medical valves with hard-to-turn knob on top. Allows Regulator to be easily positioned on valve outlet . . . 1" shorter than all other tank valves.
- 2) **New, small "O" Ring** with large seating area insures perfect seal for all make regulators.
- 3) **Available with 1/2" Standard Pipe Thread** or with Sportsways new 3/4" "O" Ring Seal Straight Thread . . . eliminating sealing compounds, heavy wrenches . . . valves go on or off the tank, literally by hand. "O" Ring Seal permits quick inside tank inspection.
- 4) **Exclusive "Safety Port"** which vents off pressure and provides warning, preventing accidental valve removal.

5) **Completely corrosion resistant materials and finishes** . . . Sportsways Reserve Mechanism made of all Stainless Steel and permanently lubricated with dry baked-on process . . . an exclusive Sportsways feature . . . both Stems are Stainless Steel.

6) **90% of all Sportsways Valve Parts are interchangeable** between valves . . . an important inventory and maintenance advantage!

The Constant Reserve Valve is a warning to the diver that a pre-determined amount of pressure is held back in the tank by way of a spring-loaded mechanism which closes the normal flow of air when the pressure of the air supply is reduced to approximately 300 PSI. By pulling the Reserve Arm down, an orifice is opened, thereby allowing the remaining air supply or "reserve" to be used by the diver.



"THE WORLD'S MOST ADVANCED DIVING EQUIPMENT"

SPORTSWAYS, INC.

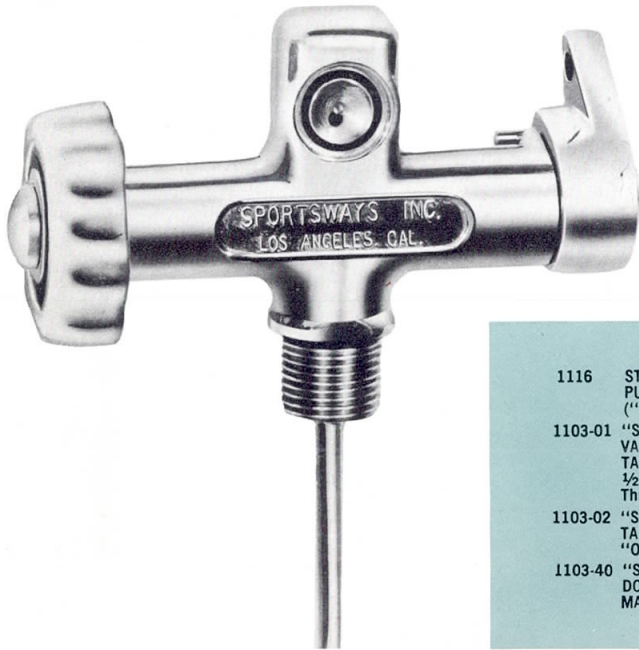
7701 E. COMPTON BLVD. • PARAMOUNT, CALIF.



TANK VALVES and ACCESSORIES

"SJ" CONSTANT RESERVE VALVE

- 1102 "SJ" SPRING-LOADED CONSTANT RESERVE VALVE (300 PSI) 1/2" Standard Pipe Thread . \$30.00
- 1112 "SJ" SPRING-LOADED CONSTANT RESERVE VALVE (300 PSI) 3/4" Straight Thread \$30.00



"SJ" DEMOUNTABLE PORTABLE SPRING-LOADED CONSTANT RESERVE VALVE. Provides single tanks with standard high pressure valves with a 300 PSI reserve. Fits all "K" or standard type valves.
 1101 "SJ" DEMOUNTABLE PORTABLE SPRING-LOADED CONSTANT RESERVE VALVE . . . \$30.00

"SK" SHUT-OFF VALVE

- 1105 "SK" TANK VALVE 1/2" Standard Pipe Thread \$11.50
- 1115 "SK" TANK VALVE 3/4" Straight Thread . . . \$11.50



PARTS LIST

1116 STAINLESS STEEL PULL ROD ("SJ" Portable) . \$ 1.25	1106 AIR STORAGE TANK VALVE 1/2" Standard Pipe Thread . \$ 9.95	1113-40 "SJ2" ELBOW FOR DOUBLE TANK MANIFOLD 3/4" . . \$ 5.95
1103-01 "SJ2" RESERVE VALVE FOR DOUBLE TANK MANIFOLD 1/2" Standard Pipe Thread \$27.50	1100-2 NEOPRENE INLET "O" RING ("SK," "SJ," "SJ2") \$.20	1100-18 NEOPRENE "O" RING FOR SEALING VALVE TO TANK ("SK," "SJ," "SJ2") \$.20
1103-02 "SJ2" DOUBLE TANK YOKE WITH "O" RING SEAL . \$15.00	1113-01 "SJ2" RESERVE TANK VALVE FOR DOUBLE TANK MANIFOLD 3/4" Straight Thread . \$27.50	1117 STAINLESS STEEL PULL ROD ("SJ" and "SJ2") \$ 1.25
1103-40 "SJ2" ELBOW FOR DOUBLE TANK MANIFOLD 1/2" . . \$ 5.95		

NOTE: Cat. No. 1117 can be used with other make "J" and "J2" Valves.



- "SJ2" DOUBLE TANK MANIFOLD**
 1103 "SJ2" DOUBLE TANK SPRING-LOADED CONSTANT RESERVE MANIFOLD (500 PSI) 1/2" Standard Pipe Thread \$49.50

- 1113 "SJ2" DOUBLE TANK SPRING-LOADED CONSTANT RESERVE MANIFOLD (500 PSI) 3/4" Straight Thread \$49.50



- "SK2" DOUBLE TANK MANIFOLD**
 1120 "SK2" DOUBLE TANK MANIFOLD 1/2" Standard Pipe Thread \$26.50
 1121 "SK2" DOUBLE TANK MANIFOLD 3/4" Straight Thread \$26.50



TANK-PACKS



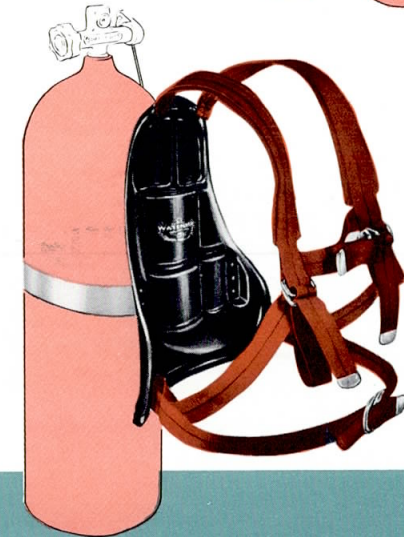
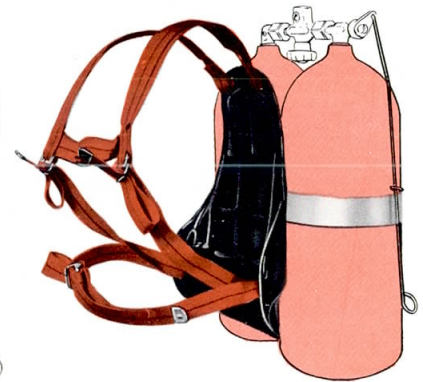
"CAM-PAC"

Sportsways exclusive cam-action release permits mounting on or removal from tank in seconds.

1. All metal construction for maximum durability.
2. Contoured, anodized metal backplate for complete comfort in any position.
3. Stainless steel tank band.
4. Comfortable quick-drying nylon web harness and chest strap.
5. Quick-release assemblies throughout.

1204	Cam-Pac	\$19.95
1204-22	Cam-Pac Pull Rod	1.25

CONTOUR-PACS



New Contour-Pac includes all the comfort and durability of the Cam-Pac without the cam-action. Tank band adjusts up or down with single bolt for secure adjustment.

1205 Contour-Pac for single tank assemblies \$15.00

Contour-Pac for double tank units, the most comfortable two tank pack assembly ever. Standard on all Sportsways double tank units.

1206 Contour-Pac for double tank assemblies \$19.95



"THE WORLD'S MOST ADVANCED DIVING EQUIPMENT"

SPORTSWAYS, INC.

7701 E. COMPTON BLVD. • PARAMOUNT, CALIF.



TANKS—TANK BLOCKS and...

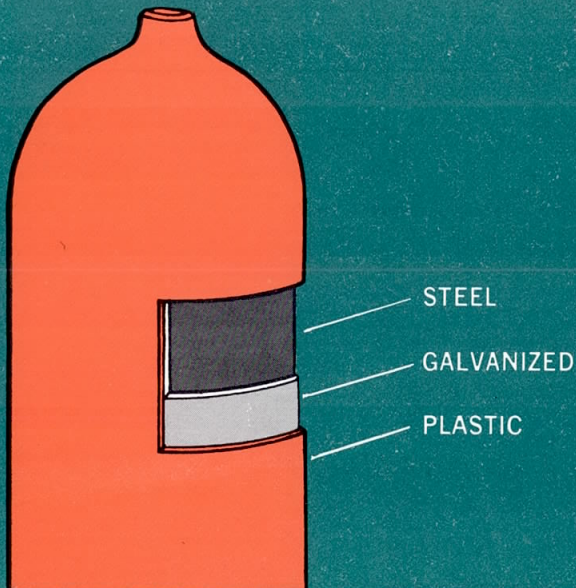
Sportsways 1962 presentation features the most complete line of Diving Tanks ever available. Tank Blocks in all combinations and sizes. Tank Assemblies for every purpose.

All Sportsways Tanks feature the $\frac{3}{4}$ " opening with "O" Ring Seal Straight Thread—the only system that meets Military Specifications for pressure seals (MIL P-5514). When the tank is empty the valve can be easily removed for visual inspection without special tools. Sportsways Valves have exclusive "Safety Port" that vents off pressure and provides warning, preventing accidental removal when there is air pressure in the tank.

Available with Galvanized exterior finish or in International Orange, the most visible safety color both underwater and on the surface.

EXCLUSIVE FEATURE:

Sportsways International Orange Tanks have a galvanized finish underneath the Orange Plastic Coating...eliminating the possibility of sub-surface corrosion.



1014 "SJ" Single Tank Assembly, 71.2 cu. ft., Orange with Cam-Pac . 90.00

1013 "SJ" Single Tank Assembly, 71.2 cu. ft., Galvanized with Cam-Pac 85.00

1001 Bare Tank, 71.2 cu. ft., Galvanized 45.00

1002 Bare Tank, 71.2 cu. ft., Orange . . 50.00



1012 "SK" Single Tank Assembly, 71.2 cu. ft., Orange with Cam-Pac \$70.00

1011 "SK" Single Tank Assembly, 71.2 cu. ft., Galvanized with Cam-Pac 65.00



1017 SJ2 double 71.2 Tank Assembly, Orange with Contour-Pac . \$160.00

1016 SJ2 double 71.2 Tank Assembly, Galvanized with Contour-Pac . 150.00

1018 SK2 double 71.2 Tank Assembly, Galvanized with Contour-Pac . 130.00

...TANK ACCESSORIES



1023 SJ Single Tank Assembly, 71.2 cu. ft., Orange with Contour-Pac 85.00

1022 SJ Single Tank Assembly, 71.2 cu. ft., Galvanized with Contour-Pac . . . 80.00



1021 "SK" Single Tank Assembly, 71.2 cu. ft., Orange with Cam-Pac . \$65.00

1020 "SK" Single Tank Assembly, 71.2 cu. ft., Galvanized with Cam-Pac 60.00



1031 SJ Single Tank Assembly, 42 cu. ft., Orange with Contour-Pac. \$70.00

1030 SJ Single Tank Assembly, 42 cu. ft., Galvanized with Contour-Pac 65.00

ECONOMY "DOUBLE 42" TANK ASSEMBLY

1025 SJ2 double 42 cu. ft. Tank Assembly, Orange with Contour-Pac \$140.00

1024 SJ2 double 42 cu. ft. Tank Assembly, Galvanized with Contour-Pac \$135.00

1027 SK2 double 42 cu. ft. Tank Assembly, Orange with Contour-Pac 125.00

1026 SK2 double 42 cu. ft. Tank Assembly, Galvanized with Contour-Pac 120.00



TANK PRESSURE GAUGE and YOKE with BLEEDER VALVE

Brass case, Main Body with Bleeder Valve brass forging, large brass forging Thumb Screw, easy to bleed, all Chrome-plated, compact professional unit, incomparable quality.

- 1403 Tank Pressure Gauge and Yoke with Bleeder Valve \$11.95
- 1403-01 Bleeder Valve Thumb Screw 1.50

1029 SK Single Tank Assembly, 42 cu. ft., Orange with Contour-Pac . \$60.00

1028 SK Single Tank Assembly, 42 cu. ft., Galvanized with Contour-Pac 55.00



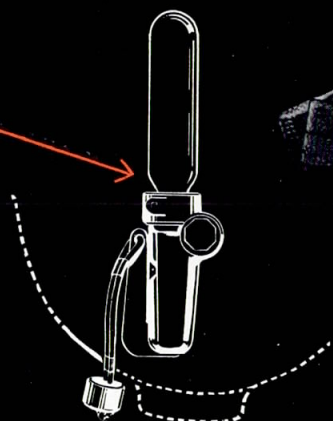
"THE WORLD'S MOST ADVANCED DIVING EQUIPMENT"

SPORTSWAYS, INC. 7701 E. COMPTON BLVD. • PARAMOUNT, CALIF.

"NAVY" SAFETY VEST

Finally, a completely reliable safety vest incorporating many exclusive new Sportsways advancements.

1. New rugged material. Nylon impregnated with neoprene. Meets Navy specifications.
2. Impervious to salt water, sun, snags. The most durable material ever.
3. Sure-fire inflation mechanism made to military specifications.
4. Fool-proof screw-in military type CO₂ cartridges. Replaceable.
5. Leakproof oral inflation tube with manual shut-off for added safety. Tube can be used to vent off excessive pressure.
6. Exclusive "Center-zip" design eliminates bulk. Easy donning and exit.
7. Head is kept out of water.
8. New strap design ensures safe, proper positioning.
9. Detonator on reverse side eliminating possibility of entanglement.
10. Safety tabs on bottom of vest for easy gripping when vest is inflated.



#1800	Navy Safety Vest . . .	\$19.95
#1800-32	Inflation mechanism . . .	5.00
#1800-35	Cartridge, 12 gram, CO ₂ screw-in75





"VISTA-VUE" MASK

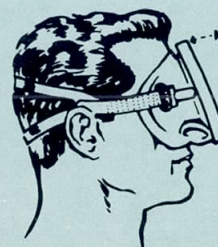
The "VISTA-VUE" Mask designed to incorporate the most important features desirable in a diving mask. The close-in-to-the-eye design provides a maximum field of vision, provides a positive, comfortable seal under all conditions. Tempered safety glass lens with exclusive "Pressure-Lock" stainless steel mask band.

- 1609 "VISTA-VUE" MASK - French Blue . . . \$4.99
- 1610 "VISTA-VUE" MASK - International Orange . . . 4.99
- 1611 "VISTA-VUE" MASK - Black Neoprene . . . 4.99

"WATERLUNG" MASK

A completely new distinctive mask from Sportsways, incorporating more advantages than any other mask.

1. High efficiency non-return exhaust valve for instantaneous clearing.
 2. Close-to-the-face design for increased vision and minimum displacement.
 3. New lens design provides 30% more visibility.
 4. Extruded foam neoprene sealing edge for a perfect seal and unexcelled comfort.
 5. Deluxe heavy duty mask bands with high lustre polished chrome finish.
 6. Comfortable split head strap for secure seal.
 7. Enlarged tempered safety glass lens.
- 1625 Waterlung Mask—Jet Black \$12.95



"EQUALIZER" MASK



The combination of advanced "VISTA-VUE" construction plus integral equalizing feature! Deep-set, easy-to-reach recessions permit quick pressure relief without removing the mask. EXCLUSIVE DESIGN: IT'S IMPOSSIBLE TO BREAK THE SEAL WHEN EQUALIZING PRESSURE!

- 1616 "EQUALIZER" MASK—French Blue \$5.95
- 1617 "EQUALIZER" MASK - International Orange 5.95
- 1618 "EQUALIZER" MASK—Black Neoprene 5.95



Places nose in perfect position for equalizing pressure.



"THE WORLD'S MOST ADVANCED DIVING EQUIPMENT"

SPORTSWAYS, INC.

7701 E. COMPTON BLVD. • PARAMOUNT, CALIF.



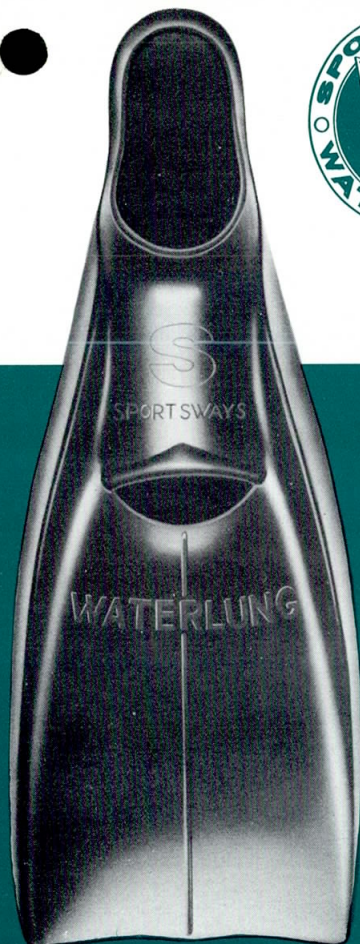
WATERLUNG FINS

The all new WATERLUNG FINS incorporate all the requirements necessary for maximum utility—comfort—power—efficiency—durability. This exclusive new design features added blade length in both Regular and Giant sizes with tapered extra high external ribs for added power. Specially contoured foot pockets provide unequalled comfort and perfect fit in all sizes. Full foot with high cut heel design for complete protection in or out of the water. Ideal for use with or without boots.

Available in Jet Black or Floating Blue.

WATERLUNG FINS

CAT. NO.	SIZE	COLOR	PRICE	CAT. NO.	SIZE	COLOR	PRICE
1512	Regular, 4-5	Black	\$ 7.95	1522	Regular, 4-5	Blue	\$ 8.95
1513	Regular, 5½ to 6½	Black	\$ 8.95	1523	Regular, 5½ to 6½	Blue	\$ 9.95
1514	Regular, 7-8	Black	\$ 8.95	1524	Regular, 7-8	Blue	\$ 9.95
1515	Regular, 8½ to 9½	Black	\$ 9.95	1525	Regular, 8½ to 9½	Blue	\$10.95
1516	Giant, 10-11	Black	\$10.95	1526	Giant, 10-11	Blue	\$11.95
1517	Giant, 11½ to 13	Black	\$11.95	1527	Giant, 11½ to 13	Blue	\$12.95
1518	Giant, 13½ to 16	Black	\$12.95	1528	Giant, 13½ to 16	Blue	\$13.95



REGULAR Waterlung Fin

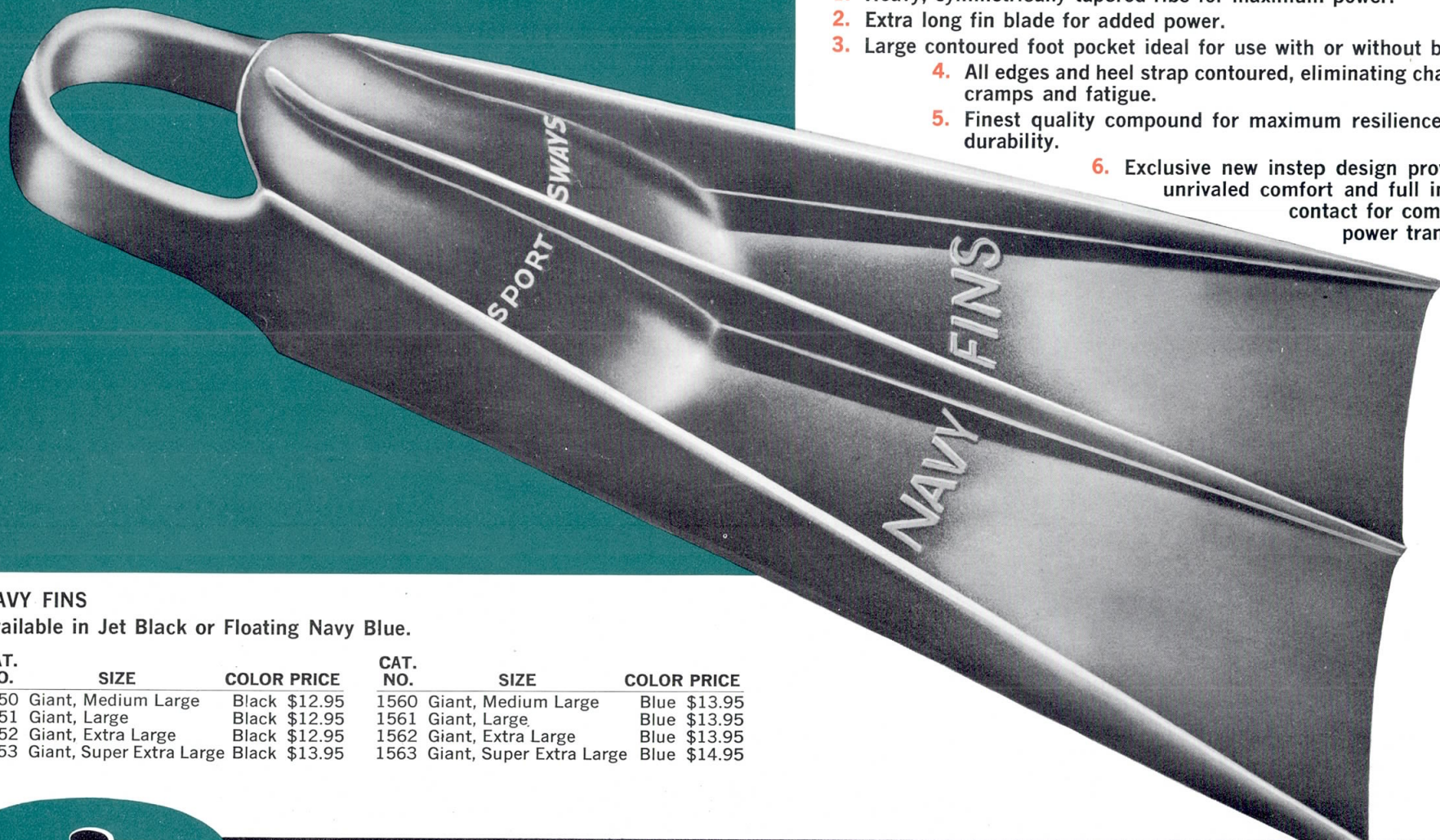


GIANT Waterlung Fin



NAVY FINS

NEW—the world's most powerful fins. The new SPORTSWAYS NAVY FINS are unequalled for thrust, speed and efficiency. Hydrodynamic design combines symmetry and rugged construction for maximum propulsion. Many new exclusive features.



1. Heavy, symmetrically tapered ribs for maximum power.
2. Extra long fin blade for added power.
3. Large contoured foot pocket ideal for use with or without boots.
4. All edges and heel strap contoured, eliminating chafing, cramps and fatigue.
5. Finest quality compound for maximum resilience and durability.
6. Exclusive new instep design provides unrivaled comfort and full instep contact for complete power transfer.

NAVY FINS

Available in Jet Black or Floating Navy Blue.

CAT. NO.	SIZE	COLOR	PRICE	CAT. NO.	SIZE	COLOR	PRICE
1550	Giant, Medium Large	Black	\$12.95	1560	Giant, Medium Large	Blue	\$13.95
1551	Giant, Large	Black	\$12.95	1561	Giant, Large	Blue	\$13.95
1552	Giant, Extra Large	Black	\$12.95	1562	Giant, Extra Large	Blue	\$13.95
1553	Giant, Super Extra Large	Black	\$13.95	1563	Giant, Super Extra Large	Blue	\$14.95



"THE WORLD'S MOST ADVANCED DIVING EQUIPMENT"

SPORTSWAYS, INC.

7701 E. COMPTON BLVD. • PARAMOUNT, CALIF.

SNORKELS



KNIVES

"COMPETITOR" SNORKEL

The only Neoprene constructed snorkel in the field—designed to provide sufficient volume of air under all conditions. The one piece moulded elbow construction allows quick easy clearing. The Competitor answers the need for an expert snorkel.

1614 Competitor Snorkel . \$2.50

"WATERLUNG" SNORKEL

The most efficient and comfortable snorkel ever developed. Flexible hose design replaces rigid design providing complete freedom when inserting or removing mouthpiece. No twisting or pulling. Drops out of the way when not in use. All the air you need and a new mouthpiece design with all edges contoured for complete comfort.

1620 Waterlung Snorkel—International Orange Tube \$2.95

1621 Waterlung Snorkel—Jet Black Tube . \$2.95

"NAVY" KNIFE and SHEATH

Superb knife to meet all requirements—a sturdy working tool.

1. Specially shaped 7" specially hardened stainless steel blade.
2. Full-length cutting edge to tapered point, with large serrated area.
3. Can be used to pry or pound.
4. Shock resistant one-piece guard and handle.
5. Injection moulded salt water resistant leg sheath. Can also be worn on belt.

1631 Navy Knife \$8.95



"DIVER" KNIFE and SHEATH

Extremely attractive, completely versatile divers knife.

1. Extra wide 7" specially hardened stainless steel blade.
2. Can be used to pry or as abalone iron.
3. Concave serrated area on opposite edge.
4. Shock resistant one-piece guard and handle. Can be used for pounding.
5. Injection molded salt water resistant leg sheath. Can also be worn on belt.

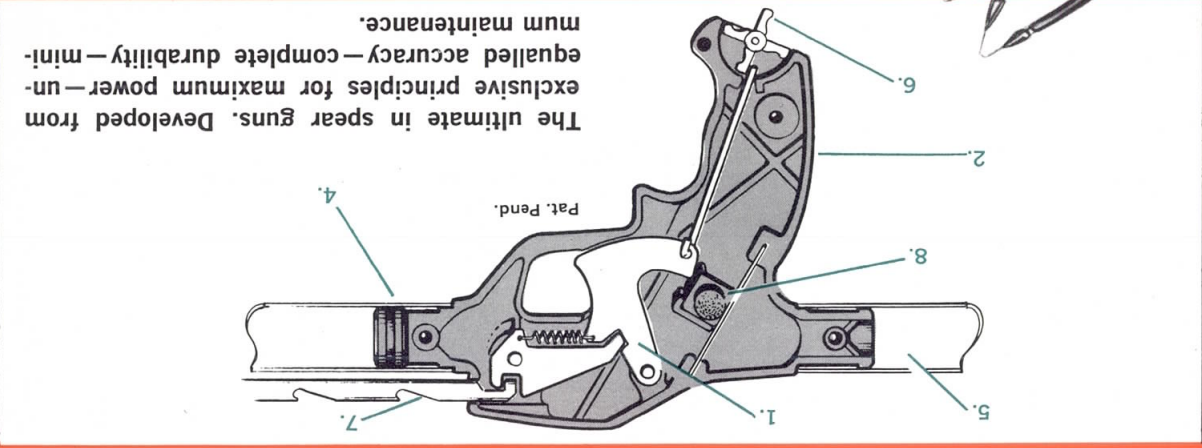
1630 Diver Knife \$9.95



SPEAR GUNS



"COMPETITOR" SPEAR GUN



The ultimate in spear guns. Developed from exclusive principles for maximum power—unequaled accuracy—complete durability—minimum maintenance.

- 5. Cocking stock for balance, accuracy, quicker handling and easier loading.
- 6. Automatic line release eliminates drag and veer. Outstanding safety notch with stainless steel shaft.
- 7. Eliminates slipping or accidental firing.
- 8. Fool-proof safety.
- 9. All stainless steel internal parts.

- 1. Exclusive trigger release lever pull resistance no matter how many slings are used.
- 2. High impact Cyclocac handles and muzzles, eliminates internal corrosion and maintains inherent lightness and maneuverability.
- 3. Spear guns float after firing.
- 4. "O" ring seals in the barrel, the only foolproof seal against water and pressure.

"SPORTSMAN" SPEAR GUN

1636	"SPORTSMAN" SPEAR GUN with Stainless Steel Single Barb Spearhead	\$19.95
1636-25	SLING (short) 13" Sportsman	2.00
1636-28	SHAFT (short) S.S. Sportsman	6.00
1635-3	MUZZLE	1.00
1635-50	GRIP Complete (assembled)	12.00
1636-51	SINGLE BARB SPEARHEAD—Stainless Steel	1.00

"COMPETITOR" SPEAR GUN

1635	"COMPETITOR" SPEAR GUN with Stainless Steel Two Barb Spearhead	\$27.50
1635-52	TWO-BARB SPEARHEAD—Stainless Steel Retractable	2.95
1635-25	SLING (long) 21" Competitor	2.50
1635-28	SHAFT (long) S.S. Competitor	7.50



"THE WORLD'S MOST ADVANCED DIVING EQUIPMENT"
SPORTSMAN, INC. 7701 E. COMPTON BLVD. • PARAMOUNT, CALIF.

Equipment for Hookah Diving



A Hookah Unit simply combines the WATERLUNG Regulator and a surface air supply. The unit is connected to a surface air source by a medium pressure hose. Ideal for diving in a limited area for extended periods of time, such as for gold diving or many types of underwater repair and salvage.

Sportsways WATERLUNG Regulators—the “NAVY UNIT,” “MASTER DIVER,” “DUAL AIR” and the “SPORT DIVER,” all include a Hookah connector that receives the Hookah Hose for use with a surface air supply.

“WATERLUNG” HOOKAH UNIT—THE ONLY UNIT SPECIFICALLY DESIGNED FOR HOOKAH DIVING . . . universally used as the most functional and practical unit of its kind. Because of the simplicity of design and rugged construction plus ease of breathing (maximum flow of air with minimum pressure and volume), gold divers and pearl divers throughout the world give the WATERLUNG HOOKAH UNIT unequivocal endorsement.

The WATERLUNG HOOKAH UNIT is a special combination which features the Second Stage of the WATERLUNG Regulator with its rugged, flexible braided Nylon Hose. The hose is connected to a special fitting and a One-Way Check Valve . . . for attaching the Hookah Hose. This unit has a special Hookah Harness and Backplate to position it on the diver’s back . . . ultimate comfort!

WATERLUNG HOOKAH UNIT—The Sportsways WATERLUNG Hookah Unit is designed for maximum efficiency and minimum restriction. Specially designed harness allows full freedom of movement. Hookah Unit includes Backplate, One-Way Check Valve and the incomparable WATERLUNG Second Stage.

1305 WATERLUNG
Hookah with Harness and
Backplate \$43.00

450 WATERLUNG
Second Stage with
Hose \$18.00

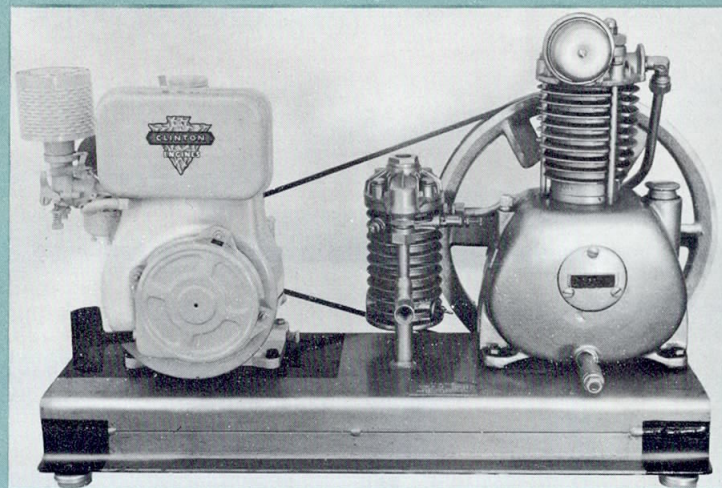
1303 Hookah Harness,
Backplate and
Check Valve . . . \$25.00

“WATERLUNG” Hookah Unit Accessories

1303-01	HOOKAH AIR HOSE (50 ft.)	\$27.00
1303-02	HOOKAH HOSE COUPLING	1.95
1303-03	AIR OUTPUT PRESSURE REGULATOR	30.00
1303-15	ONE-WAY CHECK VALVE	9.95
1314	AIR RESERVE AND VOLUME TANK	30.00
1305-03	PIPE BUSHING— $\frac{1}{8}$ " x $\frac{1}{4}$ "75
1305-04	NIPPLE— $\frac{1}{4}$ " pipe to $\frac{1}{4}$ " pipe male	1.25
1305-05	LOW PRESSURE TEE— $\frac{1}{4}$ " pipe thread	1.95
1305-06	SAFETY VALVE (150 PSI)— $\frac{1}{4}$ " pipe thread	7.95
1305-07	HEX PLUG— $\frac{1}{8}$ " pipe thread50
1305-08	ADAPTOR (50-20)	1.00
1305-09	COMPRESSOR TO VOLUME TANK HOSE	7.00
1306	200 PSI GAUGE WITH $\frac{1}{4}$ " pipe connection	8.95
1308	AIR RESERVE AND VOLUME TANK HARDWARE AND FITTINGS ASSEMBLY	44.00
1309	HOOKAH COMPRESSOR HOSE KIT	8.95
	to connect Hookah Compressor to Air Reserve and Volume Tank (includes: 1—1305-09 Hose, 2—1305-08 Adaptors)	

SPORTSWAYS Low Pressure Compressors . . . New advancements by Sportsways in low pressure compressors for Hookah use. All compressors are designed for constant operation. With low RPM long life is assured. Compressors are friction-proofed with ball and roller bearings throughout. High volume output. The finest low-pressure compressors available.

KA-102-G	Complete compressor assembly mounted with gasoline engine, filter and frame. 8 CFM at 140 P.S.I.—750 RPM	\$300.00
KA-102	8 CFM compressor only	225.00
KA-210-G	Complete compressor assembly mounted with gasoline engine, filter and frame. 11 CFM at 140 P.S.I.—750 RPM	350.00
KA-210	11 CFM compressor only	250.00
KA-301-G	Complete compressor assembly mounted with gasoline engine, filter and frame. 18 CFM at 140 P.S.I.—750 RPM	450.00
KA-301	18 CFM compressor only	350.00



KA-102-G



High Pressure Compressors

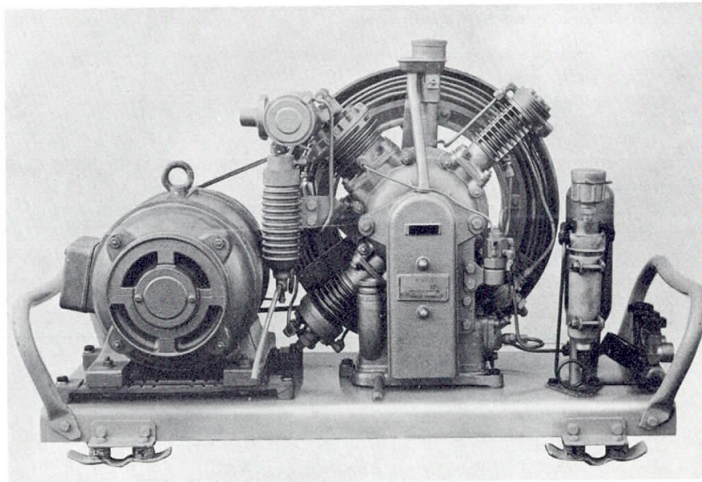
Completely new line of high pressure compressors produced with the highest standard of precision and workmanship. The only high pressure low RPM compressors available today.

Many exclusive features make these precision compressors the finest for use as a commercial air station.

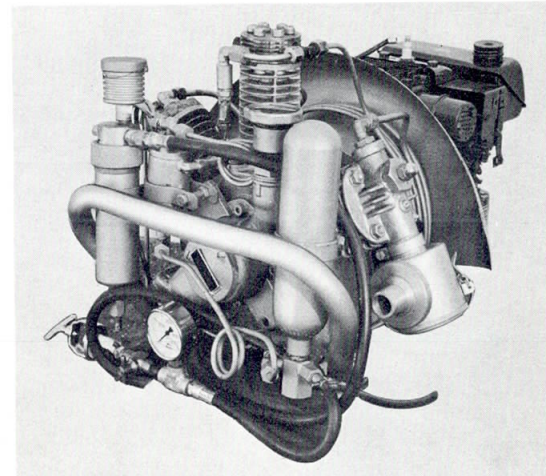
1. Complete friction proofing by roller bearings. Even needle bearing connecting rods.
2. Low RPM (750) means long life.
3. Designed for constant operation.
4. Low temperature rise. No valve troubles.
5. Inter and after-coolers between stage. Cooled by high speed radial blower.
6. High pressure oil lubrication, cam operated positive displacement pump.
7. Filters are an integral part of all compressors.
8. All machined surfaces specially hardened.

Used by the U.S. Navy and NATO. Developed with cooperation of Jordan Klein.

Working pressure on all compressors 2,800 P.S.I., 3,000 P.S.I. maximum. All units shipped frame mounted and complete with filters.

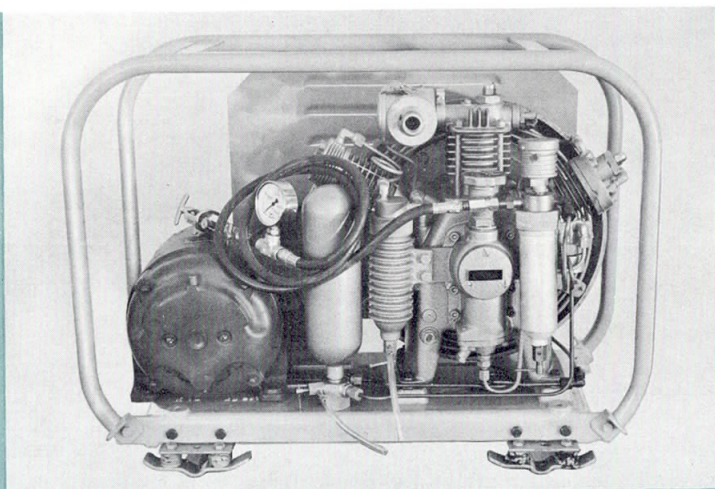


K-14-85-E

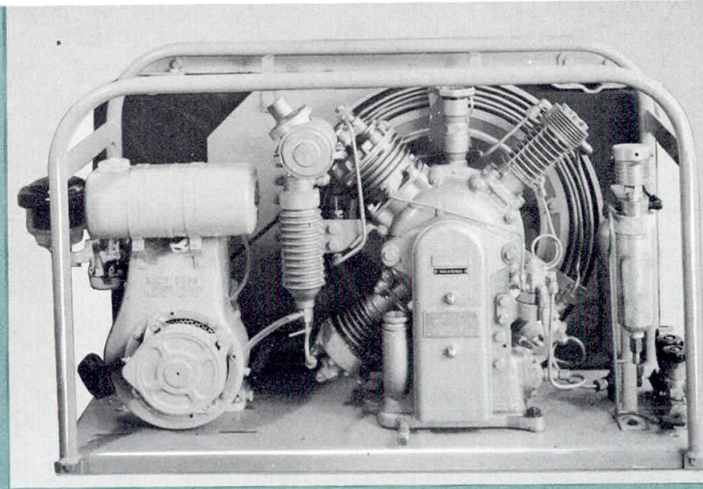


K-10

K-10-G 2.1 C.F.M. 2,500 R.P.M. Gasoline Engine, 55 lbs.	\$ 835.00
K-13-E 1.9 C.F.M. 750 R.P.M. 1.5 H.P. Electric Motor, 162 lbs.	900.00
K-14-E1 4 C.F.M. 750 R.P.M. 3 H.P. 1 Phase Electric Motor, 211 lbs. . . .	1,300.00
K-14-E3 4 C.F.M. 750 R.P.M. 3 H.P. 3 Phase Electric Motor, 188 lbs. . . .	1,260.00
K-14-G 4 C.F.M. 750 R.P.M. 4.5 H.P. Gasoline Engine, 168 lbs.	1,200.00
K-14-85-E1 8.4 C.F.M. 1,500 R.P.M. 5 H.P. 1 Phase Electric Motor, 335 lbs. . .	1,400.00
K-14-85-E3 8.4 C.F.M. 1,500 R.P.M. 5 H.P. 3 Phase Electric Motor, 255 lbs. . .	1,350.00
K-14-85-G 8.4 C.F.M. 1,500 R.P.M. 9 H.P. Gasoline Engine, 225 lbs.	1,350.00
K-14-85-A 8.4 C.F.M. 1,500 R.P.M. Frame mounted with filters. Without drive. 192 lbs.	1,200.00



KA-13-E



K-14-85

"THE WORLD'S MOST ADVANCED DIVING EQUIPMENT"

SPORTSWAYS, INC.

7701 E. COMPTON BLVD. • PARAMOUNT, CALIF.





Foam Neoprene Rubber Exposure Suits, Ski Jackets and Accessories

Made of the finest Foam Neoprene Rubber available . . . 1/4" and 3/16" skin two sides . . . especially designed with the divers' needs in mind!

Tailored to provide a snug fit at all points of the body.

Features incorporated assure maximum freedom of movement and rugged durability. The high-shaped Collar and custom-contoured Hood are designed to overlap for maximum protection.

1. "Body-form" contour design assures full freedom of movement, reduces water seepage to a minimum.
2. Arms feature exclusive forward-angle design for natural diving position.
3. Seams stretch-tested and guaranteed.
4. Pants extra high waisted for added warmth and comfort.
5. Shirt has full length, heavy-duty, double stitched Brass Zipper.
6. Snaps are doubly reinforced.
7. Exclusive women's feature: Special Zipper at waist for easy entry.

All full suits include contoured Hood and Boots



MARINER WET SUIT

Made of 3/16" Foam Neoprene-skin two side—single full length zipper on shirt front. Includes shirt, pants, and hood.

#2611—Small #2614—Large
#2612—Medium #2615—Extra Large
#2613—Medium Large

MARINER WET SUIT \$45.00

MARINER HEAVY DUTY WET SUIT

Made of heavy duty 1/4" Foam Neoprene—skin two sides. Full length shirt zipper. Includes shirt, pants, and custom contoured hood.

#2411—Small #2414—Large
#2412—Medium #2415—Extra Large
#2413—Medium Large

MARINER HEAVY DUTY WET SUIT . . . \$49.95

MARINER BLACK 3/16" SKI JACKET

#2711—Small #2714—Large
#2712—Medium #2715—Extra Large
#2713—Medium Large

MARINER SKI JACKET \$22.50

SPORTSWAYS FOAM NEOPRENE HOOD

MARINER BLACK 3/16" FOAM NEOPRENE HOOD . . . Retail Price \$6.00

CAT. NO.	SIZE	CAT. NO.	SIZE
2611-3	Small	2614-3	Large
2612-3	Medium	2615-3	Extra Large
2613-3	Medium Large		

MARINER BLACK 1/4" FOAM NEOPRENE HOOD . . . Retail Price \$6.50

CAT. NO.	SIZE	CAT. NO.	SIZE
2411-3	Small	2414-3	Large
2412-3	Medium	2415-3	Extra Large
2413-3	Medium Large		



MERMAID BLACK 3/16" SKI JACKET

#2721—Small #2724—Large
#2722—Medium #2725—Extra Large
#2723—Medium Large

MERMAID SKI JACKET \$22.50

MEASUREMENT AND SIZE CHART

SPORTSWAYS MEN'S AND WOMEN'S FOAM NEOPRENE RUBBER EXPOSURE SUITS

MEN	CHEST	WAIST	WEIGHT	HEIGHT	WOMEN'S				
					SUIT SIZE	FITS WOMEN'S SIZE	BUST	WAIST	HIPS
Small	34" - 36"	29" - 32"	125 - 155 lbs.	5'3" - 5'7"	8	7 to 9	33"	22"	34"
Medium	37" - 39"	30" - 33"	150 - 170 lbs.	5'6" - 5'10"	10	9 to 11	35"	24"	36"
Medium-Large	39" - 41"	32" - 34"	165 - 180 lbs.	5'10" - 6'1"	12	11 to 13	36"	25"	37"
Large	40" - 42"	33" - 35"	185 - 200 lbs.	5'11" - 6'2"	14	13 to 15	38"	26"	39"
Extra Large	42" - 45"	36" - 40"	205 - 230 lbs.	6'0" - 6'3"	16	15 to 17	39"	27"	40"



SPORTSWAYS BLACK FOAM NEOPRENE DIVING MITT

—3/16" skin two sides—for men and women.

CAT. NO.	SIZE
2611-5	Small
2612-5	Medium
2614-5	Large

Retail Price \$5.00 pr.

SPORTSWAYS "PERSONALIZE" LETTERS FOR RUBBER EXPOSURE SUITS

Retail Price \$.25 ea.
Available in Black, Yellow and Green.
Look for "PERSONALIZE" Letter
Display at your Dealer. Cat. No. 1584.

SPORTSWAYS FOAM NEOPRENE BOOTS

MARINER BLACK 3/16" FOAM NEOPRENE BOOTS . . . Retail Price \$5.50

CAT. NO.	SIZE	2613-4	Medium Large
2611-4	Small	2614-4	Large
2612-4	Medium	2615-4	Extra Large

MARINER BLACK 1/4" FOAM NEOPRENE BOOTS . . . Retail Price \$6.00

CAT. NO.	SIZE	2413-4	Medium Large
2411-4	Small	2414-4	Large
2412-4	Medium	2415-4	Extra Large

SPORTSWAYS "EASY-ON" RUBBER SUIT TALC

CAT. NO. 1575 RETAIL PRICE . . . \$.75

"MAGIC-BOND" FOAM NEOPRENE CEMENT

CAT. NO.	COLOR	SIZE	RETAIL PRICE
1576	Black	4 oz.	\$1.00
1577	Black	8 oz.	\$1.85
1580	Neutral	4 oz.	\$1.00
1581	Neutral	8 oz.	\$1.85



"WATERLUNG" QUICK RELEASE BELT

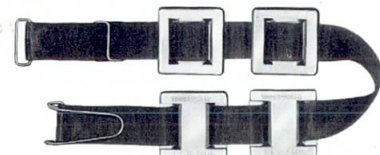
Completely new design for quick release. Releases with one easy motion. All stainless steel release assembly with heavy 2" nylon webbing. Exclusive design permits adjustment with one easy motion.

1290 Waterlung Quick Release Belt \$4.95

The following Weight Belts come equipped with new spring locking design, preventing accidental opening . . . finest quality stainless steel quick-release safety buckles with salt water resistant webbing.

WEIGHT BELTS

Cat. No. 1286 2" Pro Weight Belt with Eight 1 lb. "Snug-Fit" Weights \$11.50
Cat. No. 1287 2" Pro Weight Belt with Four 3 lb. "Snug-Fit" Weights 15.50



WEIGHT BELTS without weights Cat. No. 1289 2" Pro Weight Belt 3.95

WEIGHTS (Sold Separately) Sportsways "Snug-Fit" Weights are made to fit the 2" Pro Belts in both 1 lb. and 3 lb. sizes.

Cat. No. 1286-01 "Snug Fit" 1 lb. Lead Weight (fits the 2" Pro Weight Belt) \$1.00
Cat. No. 1287-01 "Snug Fit" 3 lb. Lead Weight (fits the 2" Pro Weight Belt) 2.95

QUICK-RELEASE SAFETY BUCKLES (Stainless Steel)

Cat. No. 1286-02 2" Quick-Release Safety Buckle Assembly \$1.75

SPORTSWAYS DIVING WATCHES



Sportsways VACUUM WATCH (patented)

New internal vacuum process combined with extremely attractive styling establishes the Sportsways Vacuum Watch as the criterion of quality. The Vacuum provides many exclusive features. Eliminates humidity and moisture therein eliminating condensation and internal corrosion. At the same time, it eliminates dust which affects the lubrication of other watches. Lubrication of the Vacuum Watch remains unaffected, nor is its running rate affected by changes in atmospheric pressure, weather and altitude as in conventional watches.

Exclusive new "tempered glass of laboratory crystal" lens eliminates absorption of moisture as in conventional crystals. 17 jewel completely automatic, self-winding. Stainless Steel time lapse bezel.

1415 Sportsways Vacuum Watch \$90.00

- #1417 Stainless steel Twist-O-Flex watchband, straight end . . . \$5.95
- #1418 Stainless steel Twist-O-Flex watchband, curved end . . . \$5.95
- #1408-2 Tropic diving watch strap, stainless steel buckle, black, straight, end, added length . \$1.95

- #1409-1 Tropic diving watch strap, stainless steel buckle, white, . \$1.95
- #1409-2 Tropic diving watch strap, stainless steel buckle, black, . \$1.95



"MOBY DICK" AUTOMATIC DIVING WATCH

Completely automatic self-winding watch. Pressure proof, water-proof with stainless steel time lapse bezel and window calendar. 17 jewels, black tropic strap.

1414 Moby Dick Automatic Diving Watch \$65.00



"MARINER" DIVING WATCH

Finest all-around value in diving watches. Includes time lapse bezel. 17 Jewel movement. Luminous Tritium markings. Manual wind. All stainless steel construction. Pressure tested and guaranteed to 300 ft. Black Tropic Strap.

Cat. No. 1408—"MARINER" \$42.50



"MERMAID" DIVING WATCH

Attractive watch, proportioned and styled specifically for feminine divers . . . Pressureproof, manual wind, Tritium, 17 Jewel movement. White Tropic Strap.

Cat. No. 1409—"MERMAID" \$45.00

"WATERLUNG" DEPTH GAUGE

Completely new original Sportsways design. Engineered for complete reliability. In three ranges, the most accurate and durable in the underwater field.

1. High impact Cylolac case for maximum durability.
2. "O" ring seal gauge cap for complete pressure proof seal.
3. Luminous markings and indicator for easy reading.
4. Exclusive mechanism design that permits removal for factory inspection resetting.

- #1410 Waterlung Depth Gauge—250 ft. . . . \$9.95
- #1411 Waterlung Depth Gauge—150 ft. . . . \$9.95
- #1412 Waterlung Depth Gauge—75 ft. . . . \$9.95



Sportsways UNDERWATER COMPASS

Completely accurate and easy to read. New design features revolving dome compass for stability. Liquid filled with durable jet black rubber case and strap.

#1420 Sportsways Underwater Compass \$4.95



"THE WORLD'S MOST ADVANCED DIVING EQUIPMENT"

SPORTSWAYS, INC. 7701 E. COMPTON BLVD. • PARAMOUNT, CALIF.



INSTRUCTIONAL MATERIAL.

SPORTSWAYS "SILENT SALESMAN"

Realistic skin diver mannequin. Life-size torso with pre-cut mouth to accept WATERLUNG mouthpiece. Tank has port for inserting Sportsways valve. Extremely attractive, constructed of durable lightweight Flexite that resists breaking and cracking. Ideal for use in instruction or as a point of sales merchandiser.

2500 Sportsways Silent Salesman



WATERLUNG DIVING MANUAL

Thorough diving training procedures and complete lesson plans with accompanying photographs. Covers all essential procedures, diving equipment, physics, and physiology. Ideal for instructor's guide or diver's reference manual.

2550 "Waterlung Diving" \$1.95

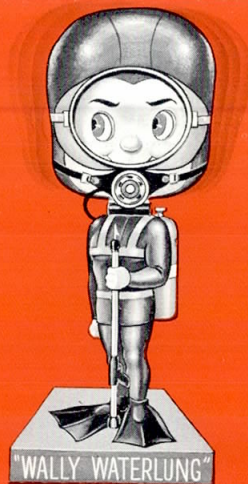
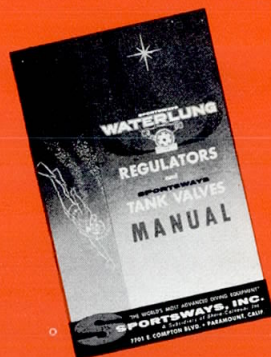
WATERLUNG DIVING EMBLEM

Attractive pressure-sensitive emblem with prominent divers flag. Identifies you as a diver. Easy to apply; ideal for tanks, car window, etc. Available at your local diving shop.



MANUAL for Waterlung Regulators and Sportsways Tank Valves

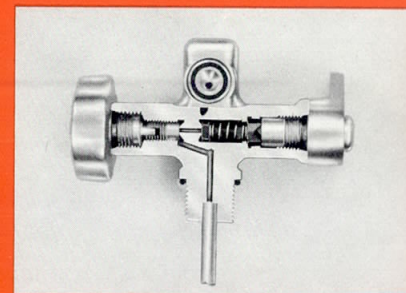
Complete manual covering WATERLUNG regulators and Sportsways valves and Sea-Vue Gauge. Includes assembly and disassembly procedures, repair and service, trouble-shooting and exploded views of products.



"WALLY WATERLUNG"

Entertaining new skin diving toy. Wally, completely outfitted in skin diving equipment is a real attention getter. Wally's head bobs and bobs and bobs. Attractive design and colorful attire makes Wally Waterlung ideal for desk, den or rear window of car.

2525 WALLY WATERLUNG . . . \$1.95



CUT-A-WAY RESERVE VALVE

Actual Sportsways SJ spring-loaded constant reserve valve. Cut-away to show mechanical action of 300 P.S.I. reserve system. Ideal visual aid for diving instruction, equipment presentation or merchandising displays.

2510
"SJ" Cut-away Constant Reserve Valve

WALL CHARTS

Large 22" x 26" wall charts covering WATERLUNG regulators and Sportsways valves. Exploded views show all parts, part numbers and prices for easy reference and repair.

and SERVICE EQUIPMENT

SPORTSWAYS-WATERLUNG HEADQUARTERS SIGN

In three colors, this 24" masonite sign identifies store as a specialist in diving equipment and services.

2501 Sportsways Waterlung Headquarters Sign

WATERLUNG SERVICE PARTS KIT

Complete assortment of WATERLUNG replacement parts for authorized service and repair stations. Covers complete range of WATERLUNG regulators.

1333 Waterlung Service Parts Kit

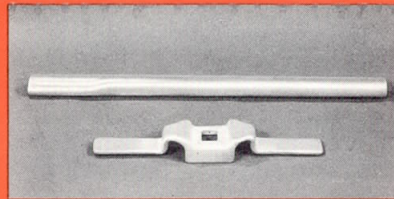


PRESSURE SETTING GAUGE and BLEEDER VALVE ASSEMBLY

Bleeder Valve with large Brass forging Thumb Screw, all Chrome-plated brass, finest quality, used by dealers who service regulators. Special adaptor for setting and adjusting intermediate pressure of WATERLUNG First Stage. This gauge can also be used for setting and adjusting pressure of all other type Two Stage Regulators.

1404 PRESSURE SETTING GAUGE AND BLEEDER VALVE ASSEMBLY \$16.95

FILLER ATTACHMENTS FITTINGS—ACCESSORIES TOOLS



TANK VALVE WRENCH WITH TORQUE HANDLE ("SJ" and "SJ2")



COMMERCIAL FILLER AND GAUGE WITH BLEEDER VALVE



4X SILICONE SPRAY AND COMPOUND

PROTECTS AND LUBRICATES ALL METALS AND RUBBER PRODUCTS. Ideal for use with working parts of S.C.U.B.A., Spear Guns, etc. Nontoxic, nonmelting, nonfreezing, non-gumming 40 below 0 to 400F. Protects against moisture and corrosion.

1226 4x SPRAY (12 oz. can)

1227 4x COMPOUND (8 oz. tube)

1425	COMMERCIAL FILLER AND GAUGE WITH BLEEDER VALVE	\$39.95
1425-7	HIGH PRESSURE HOSE—48" (1/4" Tube female swivel)	6.95
1428	PIGTAIL ASSEMBLY WITH WRENCH	6.95
1429	HIGH PRESSURE OXYGEN TEE	5.95
1430	STANDARD OXYGEN NUT	1.25
1431	STANDARD OXYGEN NIPPLE	1.25
1433	COPPER TUBING (3000 PSI)	
1434	PIPE-TITE SEALING COMPOUND	3.75
1435	#1 TRUARC PLIERS (90 degree internal)	2.65
1436	#2 TRUARC PLIERS (90 degree external)	2.65

1437	ADAPTOR—3/8" Female "O" Ring Straight Thread to 1/8" Male Pipe Thread	1.00
	(to adapt all of our new "O" Ring fittings to Model A Regulator)	
1438	ADAPTOR—1/8" Female Pipe Thread to 3/8" Male "O" Ring Straight Thread	1.00
	(to adapt all Model A fittings to Model B Regulator)	
1439	ADAPTOR—3/8" Male "O" Ring Straight Thread to 1/4" Male Pipe Thread	1.00

	(to adapt old type Pressure Setting Gauge for use on Model B Regulators)	
1325-37	"HOOKAH" ADAPTOR—3/8"—24 "O" Ring Male to 1/4" Standard Oxygen Male	1.00
	(to adapt "NAVY UNIT," "MASTER DIVER" and "DUAL AIR" to "HOOKAH" Air Supply)	
1118	TANK VALVE WRENCH WITH TORQUE HANDLE ("SJ" and "SJ2")	19.95
	IMPORTANT: STRONGLY ADVISE USING FOR INSTALLATION OF 1/2" PIPE THREAD "SJ" AND "SJ2" VALVES.	



"THE WORLD'S MOST ADVANCED DIVING EQUIPMENT"

SPORTSWAYS, INC. 7701 E. COMPTON BLVD. • PARAMOUNT, CALIF.

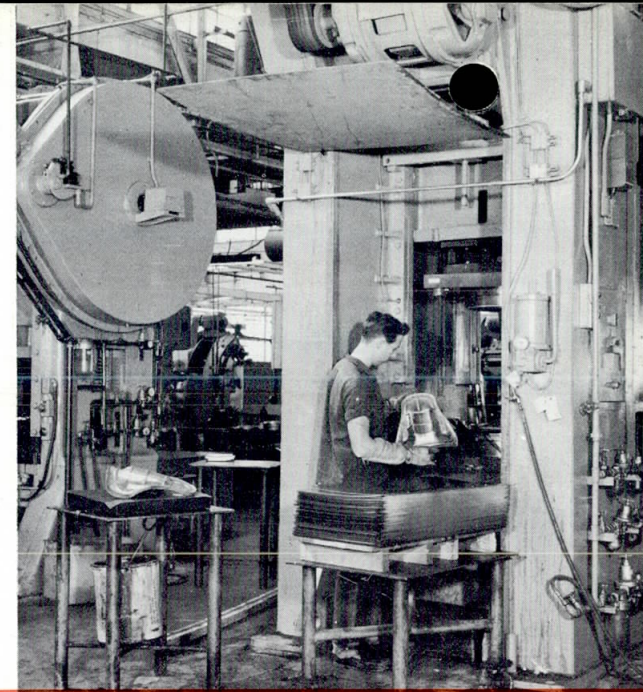
Leadership

Sportsways products are considered the criterion of quality in the underwater equipment field. The U. S. Navy and leading underwater research and oceanographic institutes throughout the world use and acclaim Sportsways Waterlungs. The unanimous endorsement of Waterlungs and all Sportsways products by military, professional and expert divers throughout the world confirms the universal leadership of Sportsways in research, development and manufacturing of submersible products.



Home of Sportsways General Offices, Manufacturing and Assembly Facilities.

All Waterlung regulators, Sportsways valves and gauges are scientifically tested at each stage of assembly.



The only company in the underwater field doing its own manufacturing. Metal processing finishing, testing and assembly are all done right in the Sportsways plant.

Sportsways management, research and sales force represent experience from every corner of the field. Top engineers (divers themselves), former Navy U.D.T. officer, expert sport divers, and certified diving instructors all provide experience and know-how vital in the development and manufacturing of safe-quality-advanced diving equipment.

Sportsways Research Laboratory is unique in the industry with an unequalled array of test, developmental and research equipment.



"THE WORLD'S MOST ADVANCED DIVING EQUIPMENT"

SPORTSWAYS, INC. 7701 E. COMPTON BLVD. • PARAMOUNT, CALIF.