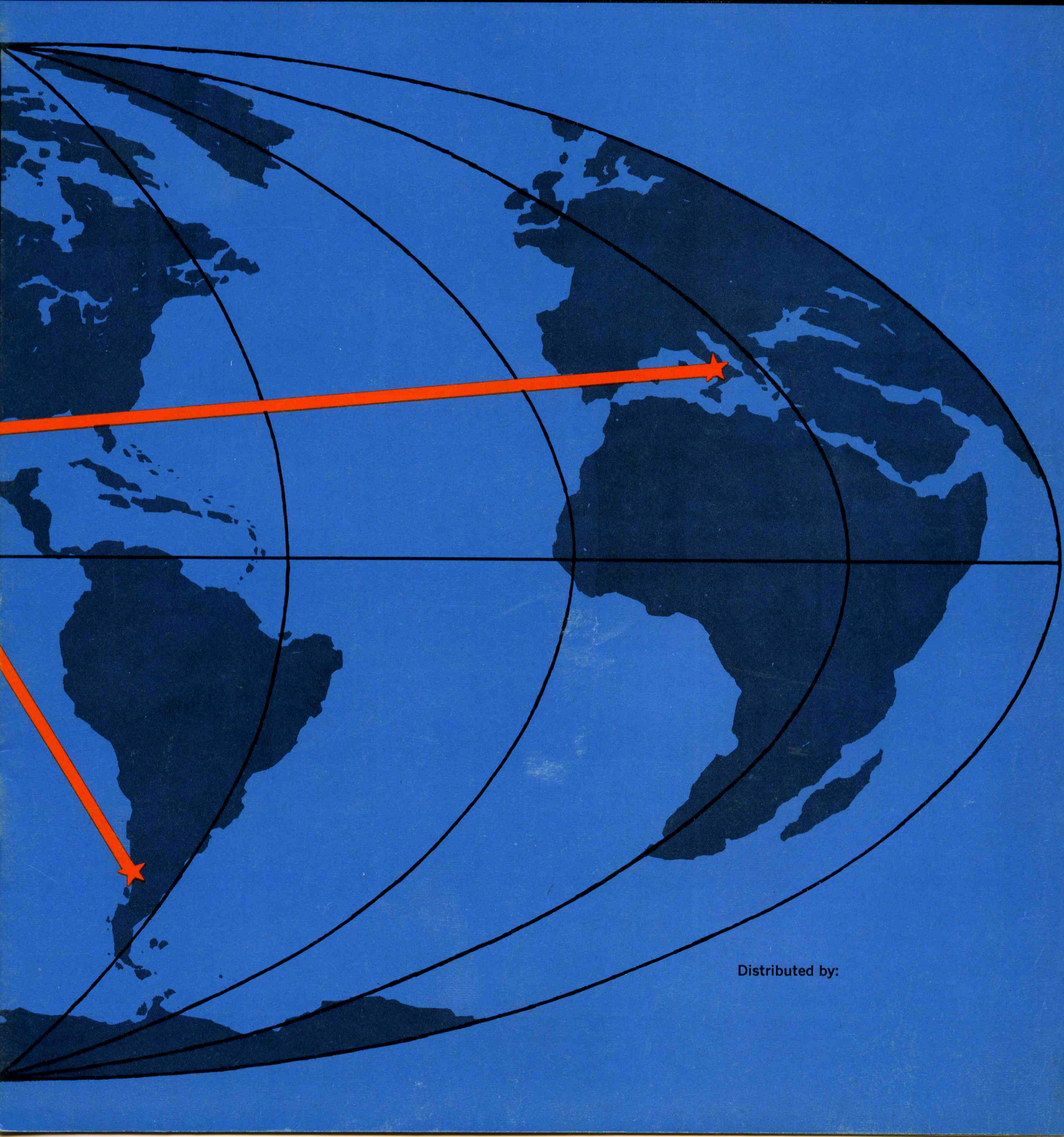


S SPORTSWAYS, INC.

7701 E. COMPTON BLVD. • PARAMOUNT, CALIF.

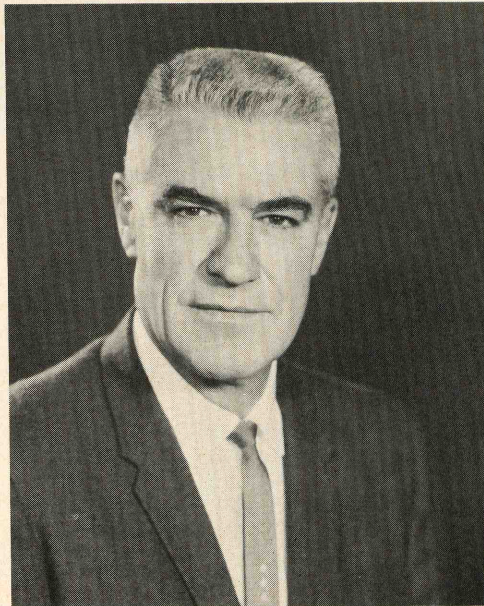


Distributed by:

MEET THE NEW MANAGEMENT OF SPORTSWAYS



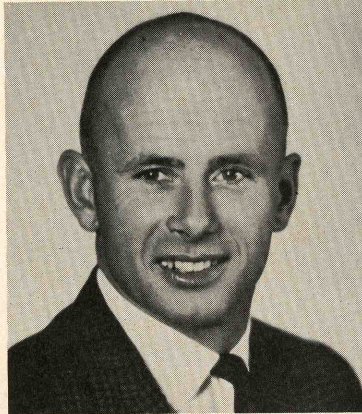
HARVEY MELVIN
President



FLOYD ERHARD
Vice President - Sales



SIDNEY NOVECK
Secretary Comptroller



SAM LeCOCQ
Consultant Engineer



JOEL SHERMAN
Customer Relations

To all our customers we pledge ourselves to bring you only the best in diving equipment.

SALES REPRESENTATIVES

IRVING YORK
SEYMOUR KAHN
ART SPECTOR
HERMAN MANCINI
FRANK BROWN
WILLIAM MADDEN
DEELY-TURGEON SALES
DON JOHNSON
NEIL CRAM (Export Sales)

616 S. Anderson Street
616 S. Anderson Street
P. O. Box 94
2516 Bryn Mawr Avenue
4904 Welford Drive
12436 S. W. Main
4985 McAllister Ave.
1651 Ala Moana Blvd.
7701 E. Compton Blvd.

Los Angeles, Calif.
Los Angeles, Calif.
Newtown, Conn.
Ardmore, Pa.
Bel Aire, Texas
Tigard, Oregon
Columbus, Ohio
Honolulu, Hawaii
Paramount, Calif.

SPORTSWAYS

SPORTSWAYS proudly presents the 1965 line of **QUALITY** diving equipment. Since **SPORTSWAYS** started manufacturing the top quality line of diving equipment, we have been copied by many but duplicated by none. A great number of "FIRSTS" in the diving industry belong to **SPORTSWAYS** and perhaps the most revolutionary is the single hose regulator. The **WATERLUNG** regulator design has come from its infancy to the most popular regulator in the nation in an incredibly short time. The reason for its popularity, as well as the rest of our line is the extra **QUALITY** put into all **SPORTSWAYS** products.

SPORTSWAYS is the **ONLY** diving equipment manufacturer that completely designs, builds, manufactures, and sells its own equipment.

SPORTSWAYS factory utilizes over 150,000 square feet of space, \$2,250,000 worth of machinery and equipment, and employs some 200 people, all striving to bring you a better piece of diving equipment.

SPORTSWAYS is the only manufacturer that maintains its own chrome plating facilities and all of **SPORTSWAYS WATERLUNG** regulators are triple chrome coated inside as well as outside to eliminate any possible corrosion damage.

SPORTSWAYS utilizes stainless steel seats and vital interior parts inside valves and regulators.

SPORTSWAYS quality control inspects and tests every piece of equipment to make sure you get the **BEST**.

Don't be fooled by outside appearances, many may look the same but **NONE** can match the extra care, workmanship and **QUALITY** materials used in all **SPORTSWAYS** equipment.

WATER LUNG QUALITY FEATURES

All vital parts stainless steel, corrosion resistant, rust-free.
Stainless steel seat.

SPORTSWAYS design in first stage permits easy access to high pressure chamber.

Free-turning regulator valve body swivels and adjusts itself to any position. All swivel points have teflon bearings for smooth action.

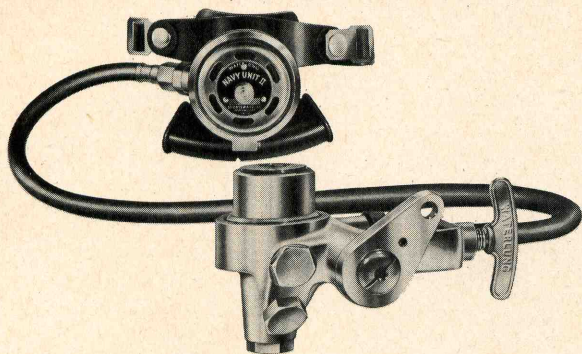
Neoprene covered nylon diaphragm.

Low pressure nylon braided hoses, individually tested by **SPORTSWAYS**. Superior quality . . . high pressure stainless steel braided hoses. All fittings with "O" ring seals.

Flexible exhalation tee — large opening permits exhalation without restriction.

Sea-View Gauge port on all regulators. Extremely lightweight second stage.

WATERLUNG REGULATORS



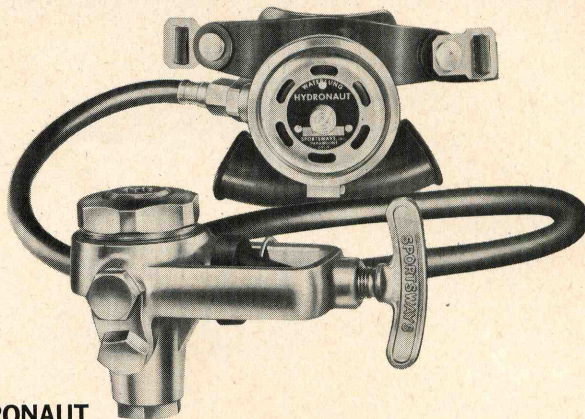
NAVY UNIT II

Unique Features:

Another SPORTSWAYS first — Positive cam-activated, spring-loaded reserve mechanism is an integral part of solid first stage body. Second stage has refined "downstream" valve design.

All moving parts made of stainless steel treated with SPORTSWAYS DRY-LUBE to reduce friction and wear. Triple plated chrome inside and outside.

- 1375 "Navy Unit II" WATERLUNG Regulator..... \$ 95.00
- 1376 "Navy Unit II" with Sea Vue Gauge..... 117.95
- 1377 "Navy Unit II" for use with double tank..... 95.00
- 1378 "Navy Unit II" for use with double tank units with Sea Vue Gauge 117.95
- 1374 "Navy Unit II" First Stage Only..... 60.00



HYDRONAUT

Unique Features:

New concept in balanced breathing allows constant pressure and flow regardless of tank pressure.

Second stage "downstream" valve delivers 22 cu. ft. of air with an effort too small to be measured.

All vital metal parts made of stainless steel for highest tensile strength. Moving parts coated with the new SPORTSWAYS DRY-LUBE, an anti-friction agent.

Triple-plated chrome inside and outside.

- 1340 "Hydronaut" Waterlung Regulator..... \$75.00
- 1341 "Hydronaut" Waterlung with Sea-Vue Gauge..... 97.95



HYDRO-TWIN II

The only two-hose regulator made with these unique features:

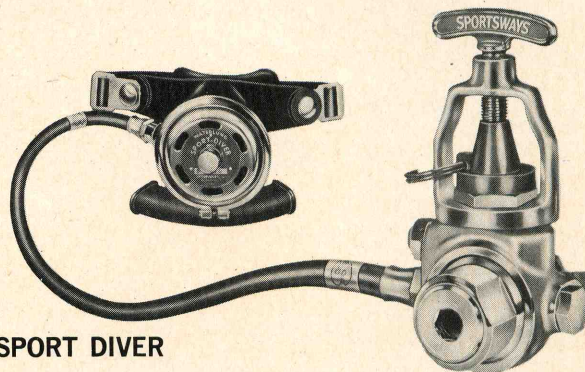
First stage "balanced valve".

Large demand diaphragm provides super-sensitive response.

Sea-Vue Gauge port. Solid onepiece forging.

All vital metal parts made of stainless steel.

- 1350 "Hydro Twin II" WATERLUNG Regulator \$ 90.00
- 1351 "Hydro Twin II" with Sea Vue Gauge..... 112.95

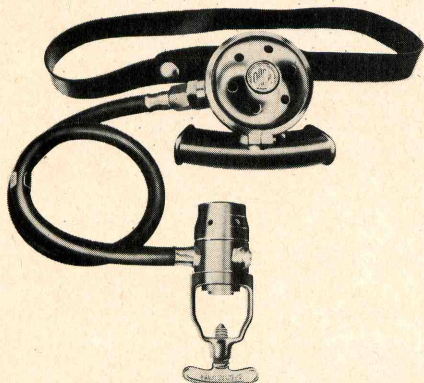


SPORT DIVER

Unique Features:

The world's most popular regulator EZ breathe rocker valve assembly makes this the best selling singlehose regulator on the market today. Solid brass forging, chrome plated inside and outside.

- 1301 "Sport Diver" Waterlung Regulator..... \$54.95
- 1302 "Sport Diver" with Sea-Vue Gauge..... 77.90

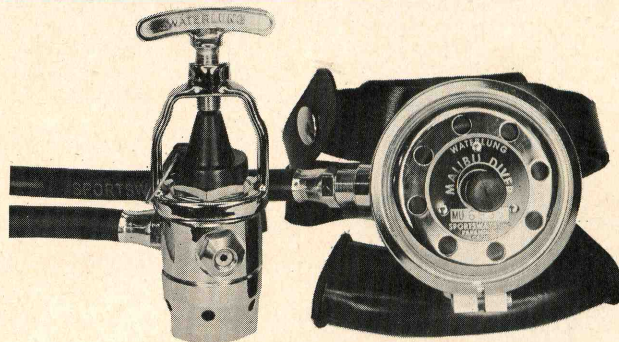


ORCA

A new regulator by SPORTSWAYS . . . Designed to meet our highest quality standards.

Pre-set "piston type" first stage, reliable and simple SPORTSWAYS "downstream valve" made of stainless steel in second stage.

- 1395 "Orca" Waterlung Regulator..... \$49.95
- 1396 "Orca" Waterlung with Sea-Vue Gauge..... 72.90



MALIBU DIVER

Unique Features:

Fine performance and workmanship at an economy price. Pre-set "piston-type" first stage, reliable and simple. EZ breathe rocker valve assembly in second stage.

- 1330 "Malibu Diver" Waterlung Regulator..... \$39.95
- 1331 "Malibu Diver" with Sea-Vue Gauge..... 62.90

TANKS

ALL SPORTSWAYS tanks feature the 3/4" opening with "O" ring seal straight thread. The only system that meets military specifications for pressure seals. (MIL-P-5514). When the tank is empty the valve can be easily removed for visual inspection without special tools. SPORTSWAYS valves have exclusive "Safety Port" that vents off pressure and provides warning, preventing accidental removal when there is pressure in the tank. All tanks galvanized, and orange exterior.



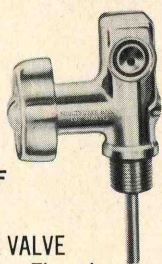
- 1002 Bare Tank, 71.2 cu. ft. Orange \$ 50.00
- 1013-01 "SJ" Valve Single Tank Assembly. 71.2 cu. ft., Galv., Les Pac 75.00
- 1014-01 "SJ" Valve Single Tank Assembly. 71.2 cu. ft., Orange, Less Pac 80.00

- 1016 "SJ2" Valve Double Tank Assembly. 71.2 cu. ft. Galv. w/Contour-Pac 159.45
- 1017 "SJ2" Valve Double Tank Assembly. 71.2 cu. ft. Orange w/Contour-Pac 169.45
- 1018 "SK2" Valve Double Tank Assembly. 71.2 cu. ft., Galv. w/Contour-Pak 136.45

- 1001 Bare Tank, 71.2 cu. ft., Galv. 45.00
- 1011-01 "SK" Valve Single Tank Assembly. 71.2 cu. ft. Galv. Less Pac 54.95
- 1012-01 "SK" Valve and Tank. 71.2 cu. ft. Orange, Less Pac 59.95

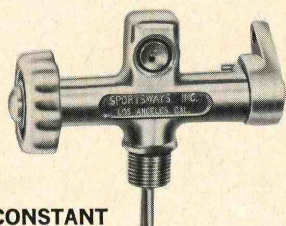
- 1116 Pull Rod, SJ Portable, Stainless Steel 1.25
- 1117 Pull Rod, Double Tank, Stainless Steel 1.25
- 1204-22 Pull Rod, Cam-Pac, Stainless Steel 1.25
- 1320-22 Pull Rod, Navy Unit Dbl., Stainless Steel 1.25

TANK VALVES



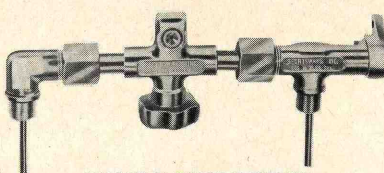
"SK" SHUT-OFF VALVE

- 1105 "SK" TANK VALVE 1/2" Std. Pipe Thread.....\$9.95
- 1115 "SK" TANK VALVE 3/4" Straight Thread.....\$9.95



"SJ" CONSTANT RESERVE VALVE

- 1102 "SJ" SPRING-LOADED CONSTANT RESERVE VALVE (300 PSI) 1/2" Std. Pipe Thread.....\$30.00
- 1112 "SJ" SPRING-LOADED CONSTANT RESERVE VALVE (300 PSI) 3/4" Straight Thread.....\$30.00



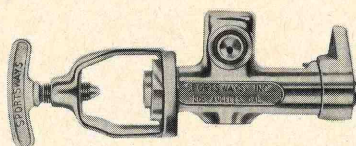
"SJ2" DOUGLE TANK MANIFOLD

- 1103 "SJ2" DOUBLE TANK SPRING-LOADED CONSTANT RESERVE MANIFOLD (500 PSI) 1/2" Std. Pipe Thread.....\$49.50
- 1113 "SJ2" DOUBLE TANK SPRING-LOADED CONSTANT RESERVE MANIFOLD (500 PSI) 3/4" Straight Thread.....\$49.50



"SK2" DOUBLE TANK MANIFOLD

- 1120 "SK2" DOUBLE TANK MANIFOLD. 1/2" Standard Pipe Thread.....\$26.50
- 1121 "SK2" DOUBLE TANK MANIFOLD. 3/4" Straight Thread\$26.50



RESERVE VALVE

- 1101 "SJ" Demountable Portable Spring-Loaded Constant Retail \$30.00

PARTS LIST

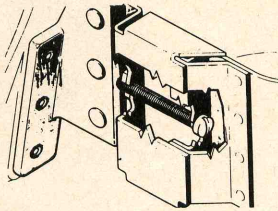
- 1103-01 "SJ2" Reserve Valve for Double Tank Manifold 1/2" Standard Pipe Thread\$27.50
- 1103-02 "SJ2" Double Tank Yoke with "O" Ring Seal 15.00
- 1103-40 "SJ2" Elbow for Double Tank Manifold 1/2" 5.95
- 1113-01 "SJ2" Reserve Tank Valve for Double Tank Manifold 3/4" Straight Thread 27.50
- 1113-40 Elbow for Double Tank Manifold 3/4" 5.95

TANK PACKS



- 1207 CAM-PAC II
orange harness\$20.95
- 1211 CAM-PAC II—
gray harness\$20.95

TANK PACKS
SPORTSWAYS EXCLUSIVE
CAM-ACTION RELEASE PERMITS
MOUNTING ON OR REMOVAL FROM
TANK IN SECONDS



NON-SLIP SCREW ADJUSTMENT

Safety designed by Sportsways and featured on the Cam-Pac II. Screw adjustment allows easy tightening of the tank band to prevent possible tank slippage. All component parts are made of stainless steel for maximum durability.



QUICK RELEASE ASSEMBLY CONTOUR-PACS

Sportsways Contour-Pacs feature all the comforts and durability of the Cam-Pac II without the cam-action. The metal tank band adjusts for position and tightness by a single galvanized bolt. Harness is orange or gray nylon webbing for strength and rapid drying. Quick release D-ring assemblies throughout.

- 1205 CONTOUR-PAC—orange harness
(for single tank assy)\$15.00
- 1209 CONTOUR-PAC—gray harness
(for single tank assy)\$15.00
- 1206 CONTOUR-PAC—orange harness
(for double tank assy)\$19.95
- 1213 CONTOUR-PAC—gray harness
(for double tank assy)\$19.95

GAUGES

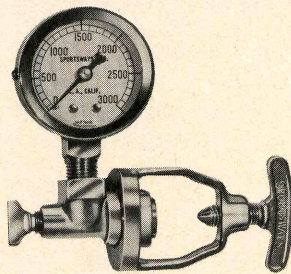


**"SEA-VUE"
GAUGE**

The "Sea-Vue" Gauge is the most vital instrument ever designed for safety in diving. The equivalent of a fuel gauge in airplanes.

- Accurately indicates your remaining air supply at all-times.
- Allows you to plan your dive minute-to-minute.
- No need to demount regulator to check tank pressure.
- Waterproof, pressure proof construction with "O"-ring seals.
- Luminous dial.
- Chrome-plated Navy brass case and bezel.
- Stainless steel braided hose encased in neoprene.
- Each hose tested at 6,000 P.S.I.

1401 SEA-VUE Pressure Gauge \$22.95

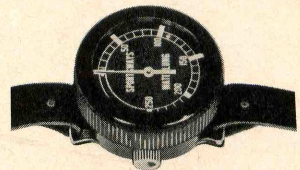


**TANK PRESSURE GAUGE &
YOKE WITH
BLEEDER VALVE**

Brass case. Main body with bleeder valve—brass forging. Large brass forging thumb screw, easy to bleed. All chrome plated.

1403 Tank Pressure Gauge
and Yoke with Bleed-
er Valve\$11.95

1403-01 Bleeder Valve Thumb
Screw 1.50



WATERLUNG DEPTH GAUGE

Completely new original Sportsways design. Engineered for complete reliability. In two ranges, the most accurate and durable in the underwater field.

High impact Cylolac case for maximum durability.

"O"-ring seal gauge cap for complete pressure proof seal.

Luminous markings and indicator for easy reading.

Exclusive mechanism design that permits removal for factory inspection and setting.

1410 Waterlung Depth Gauge
250 ft.\$9.95

1411 Waterlung Depth Gauge
150 ft.\$9.95

WATERLUNG FINS

The WATERLUNG FINS incorporate all the requirements necessary for maximum utility — comfort — power — efficiency — durability.

This exclusive design features:

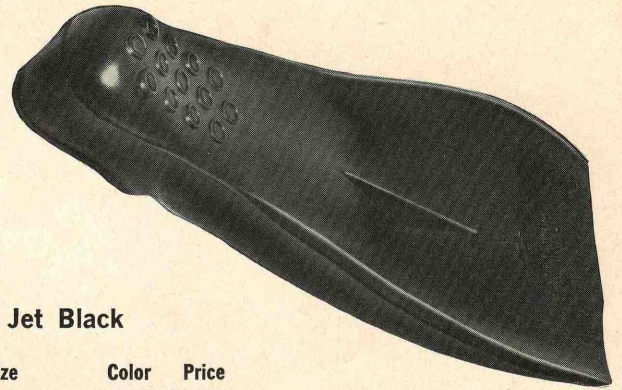
★ Full foot with high cut heel design for complete protection in or out of the water.

★ Specially contoured foot pockets provide unequalled comfort and perfect fit in all sizes.

★ Added blade length in both Regular and Giant sizes.

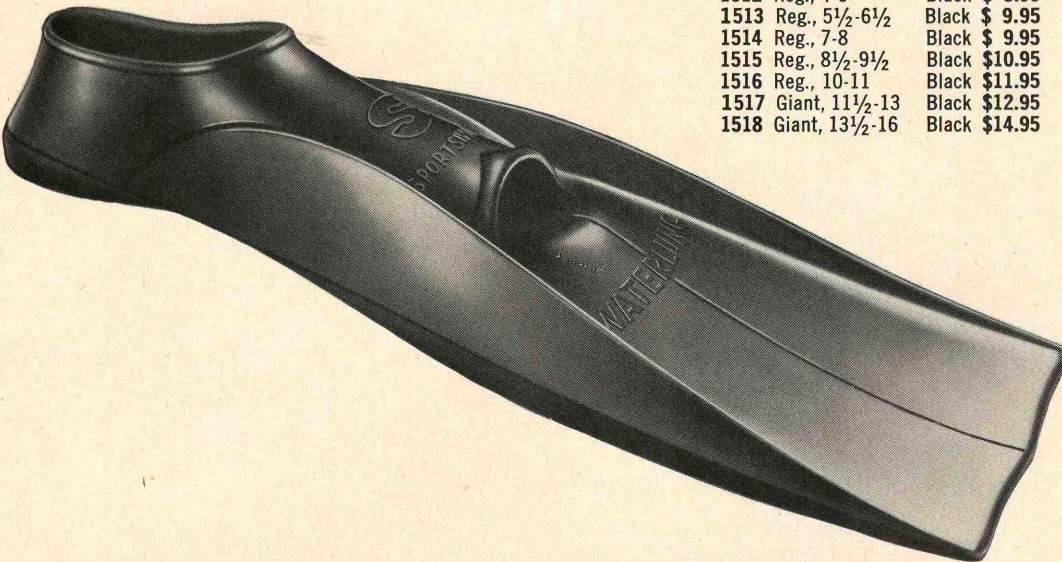
★ Tapered extra high external ribs for added power.

★ Ideal for use with or without boots. Available in Jet Black or Floating Blue



Jet Black

Cat. No.	Size	Color	Price
1512	Reg., 4-5	Black	\$ 8.95
1513	Reg., 5½-6½	Black	\$ 9.95
1514	Reg., 7-8	Black	\$ 9.95
1515	Reg., 8½-9½	Black	\$10.95
1516	Reg., 10-11	Black	\$11.95
1517	Giant, 11½-13	Black	\$12.95
1518	Giant, 13½-16	Black	\$14.95



Floating Blue

Cat. No.	Size	Color	Price
1522	Reg., 4-5	Blue	\$ 9.95
1523	Reg., 5½-6½	Blue	\$10.95
1524	Reg., 7-8	Blue	\$10.95
1525	Reg., 8½-9½	Blue	\$11.95
1526	Reg., 10-11	Blue	\$12.95
1527	Giant, 11½-13	Blue	\$13.95
1528	Giant, 13½-16	Blue	\$15.95

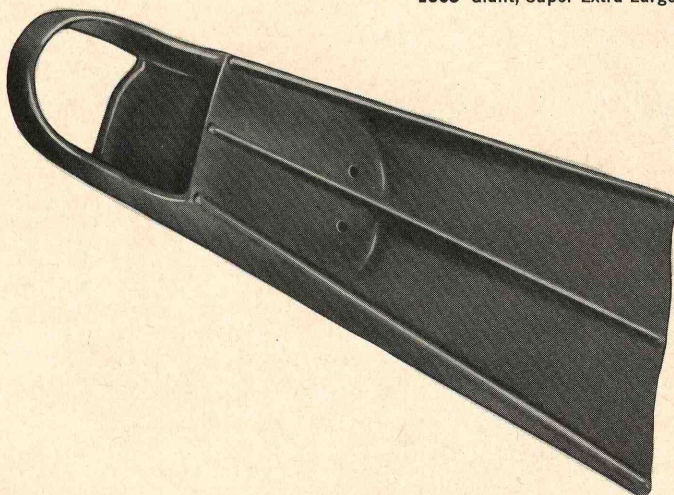
ORCA FINS

NEW—The world's most powerful fins. The NEW Sportsways ORCA FINS are unequalled for thrust, speed and comfort. Hydronamic design combines symmetry and rugged construction for maximum propulsion. New exclusive features.

- NEW resilient compound for maximum wear and durability.
- New snug-fit contoured foot pocket ideal for use with or without boots.

- Extra long fin blade for added power.
- All edges and heel strap contoured, eliminating chafing, cramps and fatigue.
- Heavy, symmetrically tapered ribs for maximum power.
- Exclusive new instep design provides unrivaled comfort and full instep contact for complete power transfer.

1565	Giant, Medium Large	Gum	\$14.95
1566	Giant, Large	Gum	\$14.95
1567	Giant, Extra Large	Gum	\$14.95
1568	Giant, Super Extra Large	Gum	\$15.95





"WATERLUNG" MASK

FROM SPORTSWAYS INCORPORATING MORE ADVANTAGES THAN ANY OTHER MASK

- ★ High efficiency, non-return exhaust valve for instant clearing, largest possible orifice.
- ★ Close-to-the-face design for increased vision and minimum displacement.
- ★ Flat grid exhalation port provides easier equalization.
- ★ Lens design provides 30% more visibility. Tempered safety glass lens.
- ★ Comfortable split head strap, adjustable from both sides for secure seal.
- ★ Hinged head strap buckles adds greater life to head strap.
- ★ Extruded foam neoprene sealing edge for a perfect seat and comfort.
- ★ Deluxe heavy duty mask bands.

- 1626 Waterlung mask with black anodized bands \$12.95
- 1626-04 Band replacement kit for waterlung mask black anodize top and bottom bands, 2 band screws 2.75



"VISTA-VUE" MASK

Slanted lens design provides better viewing. Shorter top skirt aids sealing during ascent. Stainless steel rim and screw adjustment locks lens in safe position. Tempered safety glass lens, high quality blue rubber compound or black neoprene.

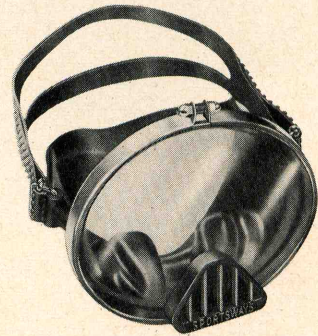
- 1650 "VISTA-VUE" French blue \$4.95
- 1651 "VISTA-VUE" Black neoprene \$4.95



"EQUALIZER" MASK

Slanted lens "Vista-Vue" design with easy-grip equalizing feature. Deep-set easy-to-reach, double step recessions permit quick pressure relief without breaking face-mask seal. An exclusive Sportsways design.

- 1652 "EQUALIZER" MASK French Blue \$5.95
- 1653 "EQUALIZER" MASK Black neoprene \$5.95



"EQUALIZER PURGE"

- 1628 "EQUALIZER PURGE" MASK with purge valve, black neoprene \$6.95

SNORKLES

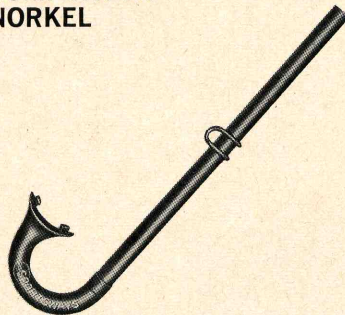
"WATERLUNG" SNORKEL



The most efficient and comfortable snorkel ever developed. Flexible hose design provides complete freedom when inserting or removing mouthpiece. No twisting or pulling. Drops out of the way when not in use. New mouthpiece design has all edges contoured for complete comfort.

- 1620 Waterlung Snorkel — International Orange Tube \$2.95
- 1621 Waterlung Snorkel—Jet Black Tube \$2.95

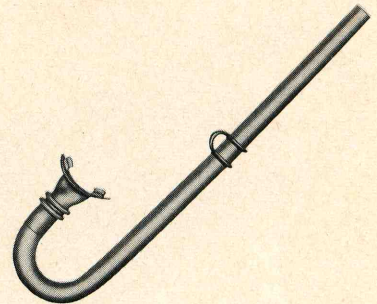
"COMPETITOR" SNORKEL



The only snorkel in the field constructed of neoprene . . . designed to provide sufficient volume of air under all conditions. One piece moulded elbow allows quick, easy clearing. The Competitor answers the need for an expert snorkel.

- 1614 Competitor Snorkel \$2.50

"CATALINA" SNORKEL



New in the Sportsways line, the "Catalina" is designed for the pro diver. The "Catalina" is constructed of the finest black rubber and equipped with bellows mouthpiece.

- 1623 Catalina Snorkel \$1.95

SUITS and Suit Accessories

Only through constant research has Sportsways been successful in bringing to you the suits, ski jackets, surf suits, surf vests, hard soled boots, contoured hoods, five fingered dexterity gloves, and three fingered mitts geared to create the profit picture demanded of our dealers.

All new 1965 Sportsways underwater exposure suits made of durable nylon-lined TUFKIN, 3-piece, 5 Heavy-duty zippers, form fit, under-arm bulging eliminated to a minimum, all seams sewn at stress points, 3/16" and 1/4", available in five sizes.

SUITS:

	Cat. No.	Size	Retail		Cat. No.	Size	Retail
3/16"	5030	Extra-Small	\$68.00	1/4"	5040	Extra-Small	\$72.00
	5031	Small	68.00		5041	Small	72.00
	5032	Medium	68.00		5042	Medium	72.00
	5033	Large	68.00		5043	Large	72.00
	5034	Extra-Large	68.00		5044	Extra-Large	72.00

SIZE CHART FOR SPORTSWAYS SUITS

	Extra Small	Small	Medium	Large	Extra Large
CHEST	31" - 33"	34" - 36"	37" - 39"	40" - 42"	43" - 46"
WAIST	24" - 26"	27" - 29"	30" - 32"	33" - 35"	36" - 38"
HEIGHT	5'2" - 5'7"	5'5" - 5'9"	5'7" - 6'0"	5'10" - 6'2"	6'0" - 6'4"



SUIT JACKET:

	Cat. No.	Size	Retail		Cat. No.	Size	Retail
3/16"	5030-1	Extra-Small	\$42.00	1/4"	5040-1	Extra-Small	\$46.00
	5031-1	Small	42.00		5041-1	Small	46.00
	5032-1	Medium	42.00		5042-1	Medium	46.00
	5033-1	Large	42.00		5043-1	Large	46.00
	5034-1	Extra-Large	42.00		5044-1	Extra-Large	46.00

SUIT PANTS:

	Cat. No.	Size	Retail		Cat. No.	Size	Retail
3/16"	5030-2	Extra-Small	\$35.00	1/4"	5040-2	Extra-Small	\$37.00
	5031-2	Small	35.00		5041-2	Small	37.00
	5032-2	Medium	35.00		5042-2	Medium	37.00
	5033-2	Large	35.00		5043-2	Large	37.00
	5034-2	Extra-Large	35.00		5044-2	Extra-Large	37.00



HOODS:

TUFKIN Nylon-Lined, seams sewn at stress points, contoured in such a manner that a near perfect seal around the entire face and neck is assured. 3/16" and 1/4", available in five sizes.

	Cat. No.	Size	Retail		Cat. No.	Size	Retail
3/16"	5030-3	Extra-Small	\$5.00	1/4"	5040-3	Extra-Small	\$5.60
	5031-3	Small	5.00		5041-3	Small	5.60
	5032-3	Medium	5.00		5042-3	Medium	5.60
	5033-3	Large	5.00		5043-3	Large	5.60
	5034-3	Extra-Large	5.00		5044-3	Extra-Large	5.60

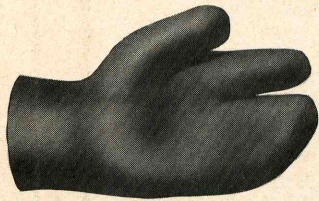
BOOTS:

TUFKIN Nylon-Lined, Hard-sole, zippered boots, all seams sewn at the vital stress points. 3/16" and 1/4", available in seven sizes.

	Cat. No.	Size	Retail		Cat. No.	Size	Retail
3/16"	5030-4	Extra-Small (5-6)	\$10.00	1/4"	5040-4	Extra-Small (5-6)	\$11.00
	5031-4	Small (7-8)	10.00		5041-4	Small (7-8)	11.00
	5032-4	Medium (8-9)	10.00		5042-4	Medium (8-9)	11.00
	5033-4	Medium-Large (9-10)	10.00		5043-4	Medium-Large (9-10)	11.00
	5034-4	Large (10-11)	10.00		5044-4	Large (10-11)	11.00
	5035-4	Extra-Large (11-13)	10.00		5045-4	Extra-Large (11-13)	11.00
	5036-4	Super X-Large (13-15)	10.00		5046-4	Super X-Large (13-15)	11.00



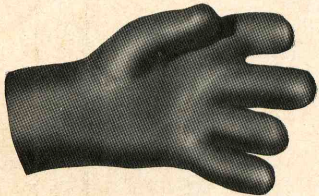
SUIT ACCESSORIES



MITTS:

TUFSKIN Nylon - Lined, three fingered, designed to our exacting demands. 3/16" available in five sizes.

Cat. No.	Size	Retail
5030-5	Extra-Small	\$6.25
5031-5	Small	6.25
5032-5	Medium	6.25
5033-5	Large	6.25
5034-5	Extra-Large	6.25



GLOVES:

TUFSKIN, Nylon - lined, five fingered glove, manufactured to our exacting demands to create the finger dexterity so vitally necessary for the expert diver. 3/16", available in five sizes.

Cat. No.	Size	Retail
5030-6	Extra-Small	\$7.50
5031-6	Small	7.50
5032-6	Medium	7.50
5033-6	Large	7.50
5034-6	Extra-Large	7.50

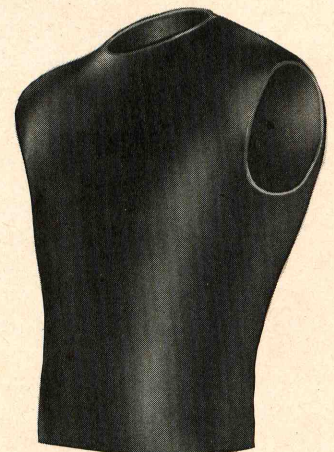


SKI JACKET:

TUFSKIN, Nylon-lined short sleeves, with beaver tail, 3/16" and 1/8", available in five sizes.

3/16"	Cat. No.	Size	Retail
}	5530	Extra-Small	\$23.75
	5531	Small	23.75
	5532	Medium	23.75
	5533	Large	23.75
	5534	Extra-Large	23.75

1/8"	Cat. No.	Size	Retail
}	5520	Extra-Small	\$22.50
	5521	Small	22.50
	5522	Medium	22.50
	5523	Large	22.50
	5524	Extra-Large	22.50



SHORTY SURF & SKI SUIT

TUFSKIN, Nylon-lined, short sleeves, short legs, 3/16", available in five sizes.

Cat. No.	Size	Retail
5630	Extra-Small	\$32.50
5631	Small	32.50
5632	Medium	32.50
5633	Large	32.50
5634	Extra-Large	32.50

VEST: TUFSKIN, Nylon Lined, no arms, no beaver tail, no zippers, 3/16" and 1/8", available in five sizes.

3/16"	Cat. No.	Size	Retail	1/8"	Cat. No.	Size	Retail
}	5730	Extra-Small	\$16.00	}	5720	Extra-Small	\$15.00
	5731	Small	16.00		5721	Small	15.00
	5732	Medium	16.00		5722	Medium	15.00
	5733	Large	16.00		5723	Large	15.00
	5734	Extra-Large	16.00		5724	Extra-Large	15.00

SKI VEST: TUFSKIN, Nylon-lined, with zipper, no arms, no beaver tail, 1/8" and 3/16", available in five sizes.

3/16"	Cat. No.	Size	Retail	1/8"	Cat. No.	Size	Retail
}	5830	Extra-Small	\$20.00	}	5820	Extra-Small	\$18.75
	5831	Small	20.00		5821	Small	18.75
	5832	Medium	20.00		5822	Medium	18.75
	5833	Large	20.00		5823	Large	18.75
	5834	Extra-Large	20.00		5824	Extra-Large	18.75

SAFETY VESTS

FIRST IN SAFETY AND QUALITY, THE MOST RELIABLE VEST MADE.

Exclusive features:

- New rugged material. Nylon impregnated with neoprene. Meets military specifications. Mil-C 19002 Type 1.
- Impervious to salt water, sun, snags. The most durable material ever.
- Sure-fire inflation mechanism.
- Replaceable, fool-proof, screw-in type CO₂ cartridges.
- Leak-proof oral inflation tube with manual shut-off for added safety. Tube can be used to vent off excessive pressure.
- "Center-zip" design eliminates bulk. Easy donning and exit.
- Head is kept out of water.
- Detonator on reverse side eliminates possibility of entanglement.
- New strap design ensures safe, proper positioning.
- All strap tabs DOUBLE reinforced.

You can not compromise on quality when your life depends on a piece of safety equipment . . . buy the vest that has been duplicated but never equalled.

1800	Navy Safety Vest, orange	\$24.95
1810	Navy Safety Vest, gray	\$24.95
1800-35	Cartridge, 12 gram, CO ₂ Screw-in.....	\$.75
1800-38	Safety Vest Repair Kit, orange	\$ 2.50
1800-38G	Safety Vest Repair Kit, gray	\$ 2.50

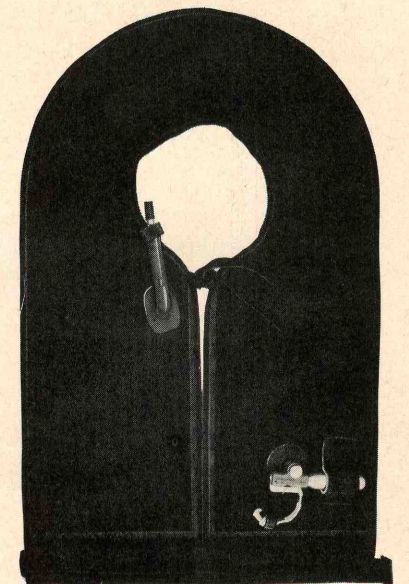


DIVERS VEST:

is the finest Life Vest Available of the 'Mae West' Navy design. Complete CO₂ automatic inflation system. Oral valve . . . the "Depress to Inflate" type, helpful in obtaining zero buoyancy. Fine poplin material — fully bound edges. Adjustable waist strap to fit youngsters as well as adults. Can be inflated manually.

Navy Specifications on Hardware for complete CO₂ automatic inflation system. Screw-in type; replaceable CO₂ cartridge — oversize 12 gram capacity. All hardware protected against salt water corrosion. Just pull Lanyard for instant inflation. Extra CO₂ gas cylinders.

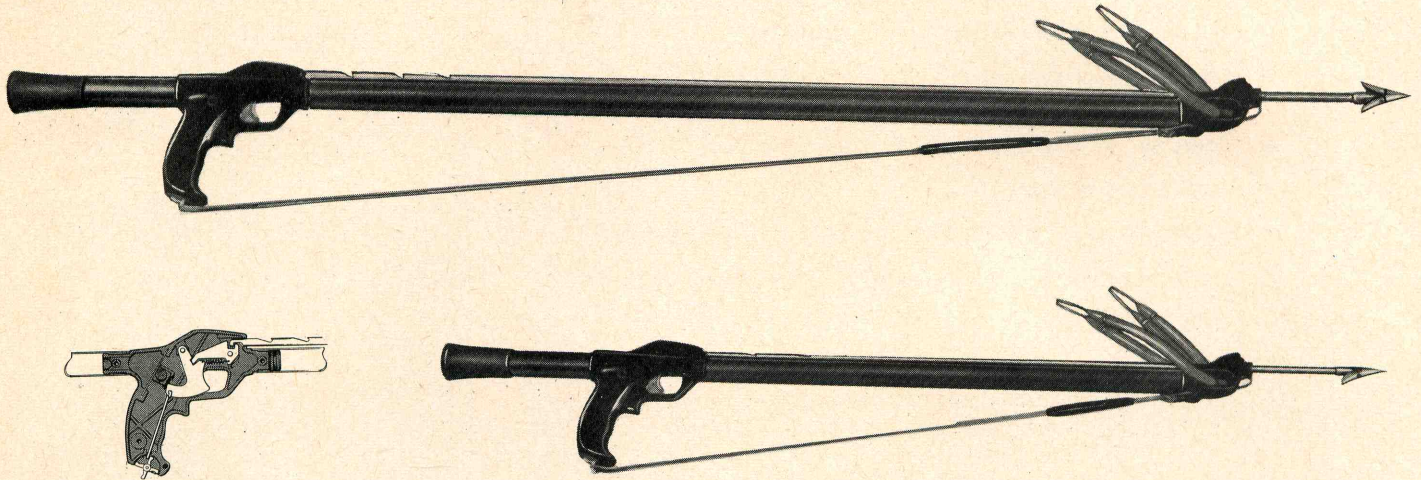
1820	\$15.95
------	-------	---------



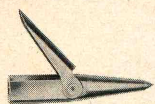
SPEAR GUNS

The ultimate in spear guns. Developed from exclusive principles for maximum power—unequaled accuracy—complete durability—minimum maintenance. All stainless steel internal parts. Used in competition throughout the world.

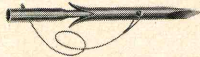
- ★ Exclusive trigger release leverage system eliminates trigger pull resistance, no matter how many slings are used.
- ★ High impact Cylolac handles and muzzles eliminates internal corrosion and provides lightness and maneuverability.
- ★ Spear guns float after firing.
- ★ "O"-ring seals in the barrel, the only foolproof seal against water and pressure.
- ★ Cocking stock for balance, accuracy, quicker handling, and easier loading. Also can be used for storage of spear tips.
- ★ Automatic line release eliminates drag and veer. Out of the way of hands.
- ★ Stainless steel shaft with exclusive safety notch that eliminates slipping or accidental firing.
- ★ Fool-proof safety. Stainless steel internal part.



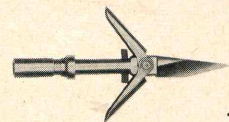
1635	"COMPETITOR" SPEAR GUN with Stainless Steel Two Barb Spearhead	\$28.50	1636-25	SLING (Short) 13" Sportsman	2.00
1635-25	SLING (long) 21" Competitor	2.50	1636-28	SHAFT (Short) S.S. Sportsman	6.50
1635-28	SHAFT (long) S.S. Competitor	7.50	1635-3	MUZZLE	1.50
1636	"SPORTSMAN" SPEAR GUN with Stainless Steel Single Barb Spreadhead	19.95	1635-50	GRIP Complete (assembled)	12.95



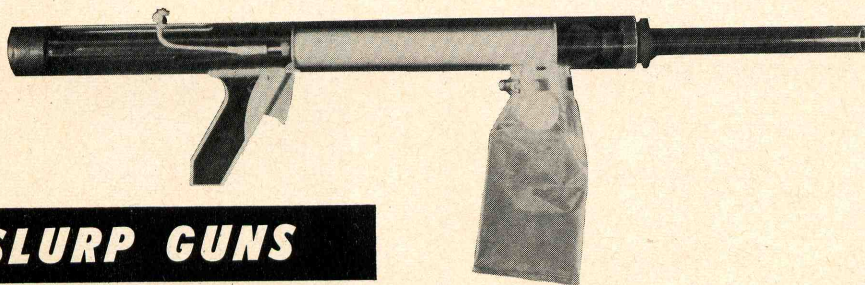
SINGLE BARB SPEARHEAD
Stainless steel
1636-51 \$1.95



DETACHABLE POINT COMBINATION KIT
3" Tri-cut head, threaded adaptor, nylon cable
1635-58\$5.95



TWO-BARB SPEARHEAD
stainless steel, retractable
1635-52\$3.95



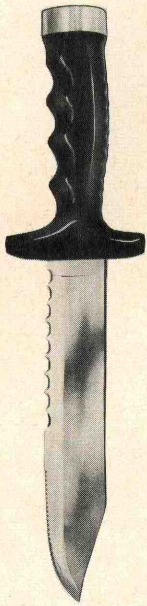
SLURP GUN

Home aquariums provide an exciting hobby for the whole family. Bring underwater life to your home. Slurping is educational and fun for everyone. A must for any diver. So simple and safe to us that a child can operate it.

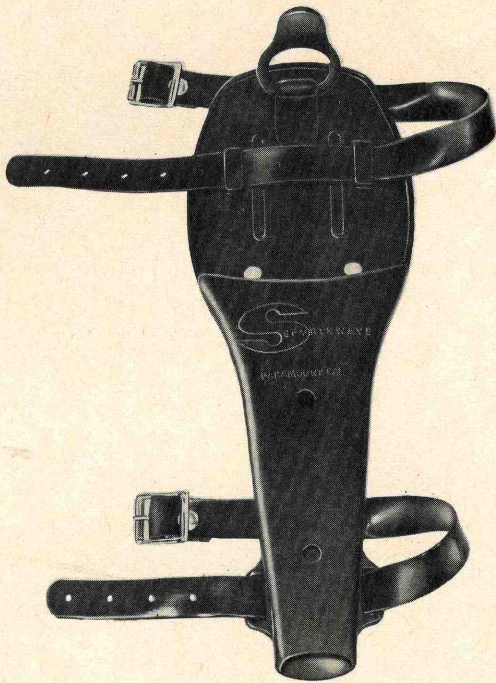
1638 SLURP Gun \$39.95

SLURP GUNS

KNIVES



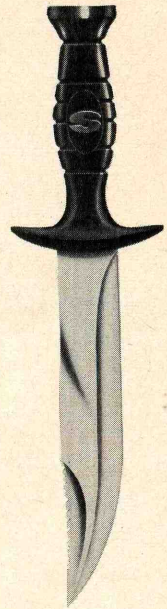
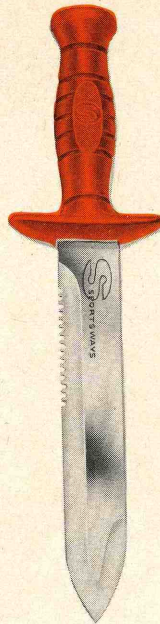
MALIBU KNIFE
(black handle)
\$10.95



"NAVY" KNIFE AND SHEATH

- Superb knife to meet all requirements — a sturdy working tool.
- Full-length cutting edge to tapered point, with large serrated area.

1631 Navy Knife (black handle)\$9.95
1641 Navy Knife (orange handle)\$9.95



"DIVER" KNIFE AND SHEATH

- Extremely attractive, completely versatile diver's knife.
- Concave serrated area on opposite edge.

1630 Diver Knife (black handle)\$9.95
1640 Diver Knife (orange handle)\$9.95

ACCESSORIES



CLEBAR WATCH

Sportsways presents new thinking in diving watch design. The first and only underwater timepiece with an internal bezel for ultimate protection! Bezel turns beneath the pressure proof crystal by a bevel-gear knob. Completely automatic, 17 jewel, anti-magnetic, shock-resistant, with stainless steel case. Pressure tested for 20 atmospheres — 660 feet!

1421 WATERLUNG
CLEBAR,
white
dial 100.00

1422 WATERLUNG
CLEBAR,
black
dial\$100.00



**SEA WOLF
DATOGRAPHIC**

1750-B Black \$110.00	1750-W White \$110.00
-----------------------------	-----------------------------



**LADIES
SEA WOLF
2036
100.00**



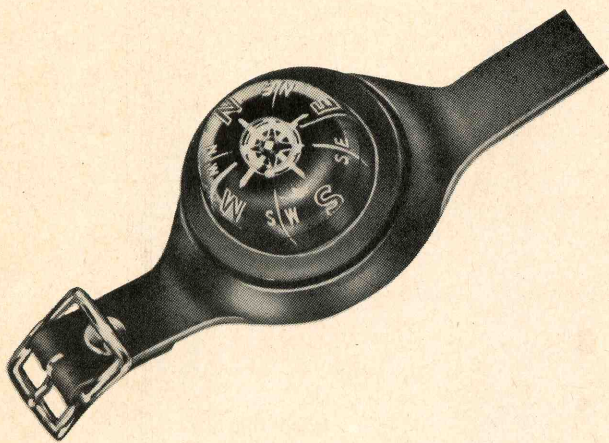
**SEA WOLF
3080-B
Black dial
\$100.00**

**3080-W
White dial
\$100.00**

EXPANSION BRACELET

Smartly designed, rust-proof stainless steel for long life under rugged conditions. Satin finish.

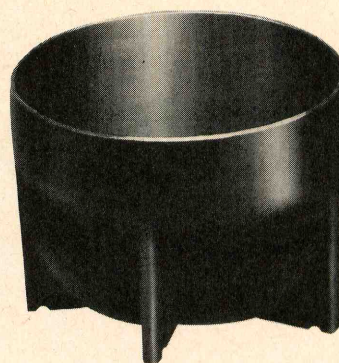
3080-2 Expansion Bracelet,
stainless steel\$9.95



UNDERWATER COMPASS

Completely accurate and easy to read. New design features revolving dome compass for stability. Liquid filled. Durable jet black rubber case and strap.

1420 Sportsways Underwater Compass\$3.95



WATERLUNG TANK BOOT

New protective boot slips snugly over the bottom of any standard diameter cylinder. Made of new black synthetic material which will not mark or mar surfaces. Flat bottom allows the cylinder to remain in vertical position.

1050 Waterlung Tank Boot (black)\$3.95

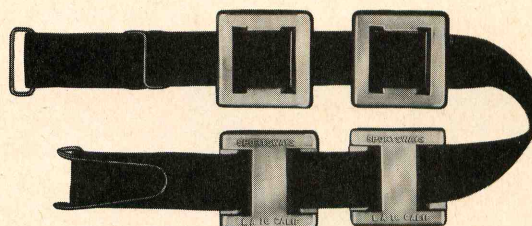


"HYDRO-BELT"

- Airplane type quick-release, all metal buckle. Black anodized finish.
- 2" orange or gray nylon belt.
- Stainless steel spring and pivot pin.
- Easy to slip lead weights on and off.

1291 Hydro-Belt, orange\$4.95

1293 Hydro-Belt, gray\$4.95



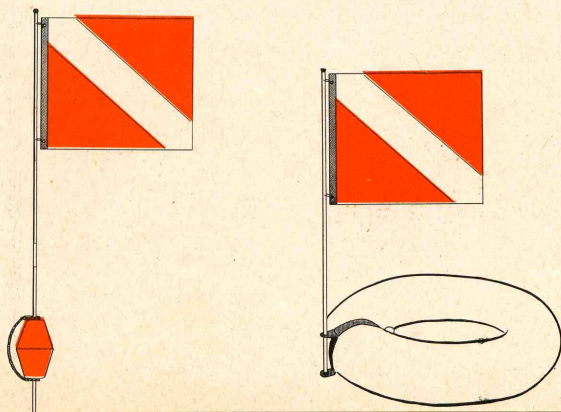
WEIGHT BELTS & ACCESSORIES

Cat. No. 1287 2" Pro Weight Belt with Four 3-lb. "Snug-Fit" Weights 15.50

Cat. No. 1289 2" Pro Weight Belt without weights 3.95

Cat. No. 1287-01 "Snug-Fit" 3-lb. Lead Weight (for 2" Belt) 2.95

Cat. No. 1286-02 2" Quick-Release Safety Buckle Assembly 1.75



DIVERS FLAG & BUOYS

1480 Waterlung Divers Flag, 12" x 15", 36" mast. Clamps to any size inner tube\$8.50

1481 Waterlung Flag Buoy, 12" x 15" flag, 48" mast, counter weight and tow harness\$9.75

**PHOTO MURALS FOR THE CLUB ROOM — OFFICE
— or DEN — UNDERWATER PHOTO MURALS**

Giant size 22" x 26" underwater photographs taken by Ron Church depicting diving activity in HAWAII, MEXICO, and CALIFORNIA. TWO COLORS, showing rare black coral, turtle diving, shell diving and underwater photography.

2507 Complete set of 4 prints **\$1.50**

MOVIES — UNDERWATER MOVIES — Clubs, Conventions, Fund raising organizations, meetings, diving promotion or home enjoyment. Here is a chance to purchase an exciting underwater movie to thrill your friends and acquaintances. Two exciting new films photographed and edited by Ron Church 1962 Underwater Photographer of the year. Sound, color, personally narrated.

"MYSTERIES OF THE GULF" — Gold Medal Winner

A fantastic color film depicting the mysterious underwater creatures of the Gulf of California. 15,000 Barracuda in one school, cleaning stations, garden eels and powerful game fish in feeding behaviors. "A short course in marine biology," 12 min. Sound, color.

2541 **\$75.00**

"ADVENTURE UNDERWATER"

Filmed at fabulous CAPE SAN LUCAS, home of the "Rivers of Sand." Exciting scenes catching turtles, spearing powerful game fish and defying a giant barracuda school. Feeding behaviors of predatory fish, a wall of fish. Taken from 35mm Eastman color, photographed and edited by Ron Church. 20 min. Sound, color.

2543 **\$100.00**

"ANYONE FOR DIVING"

A thirty-five minute film of general interest and the fun of diving . . . plus an up-to-date instructional aid with 7 min. of Walt Disney animation prologue. 16mm sound — Color . . . 35 mn.

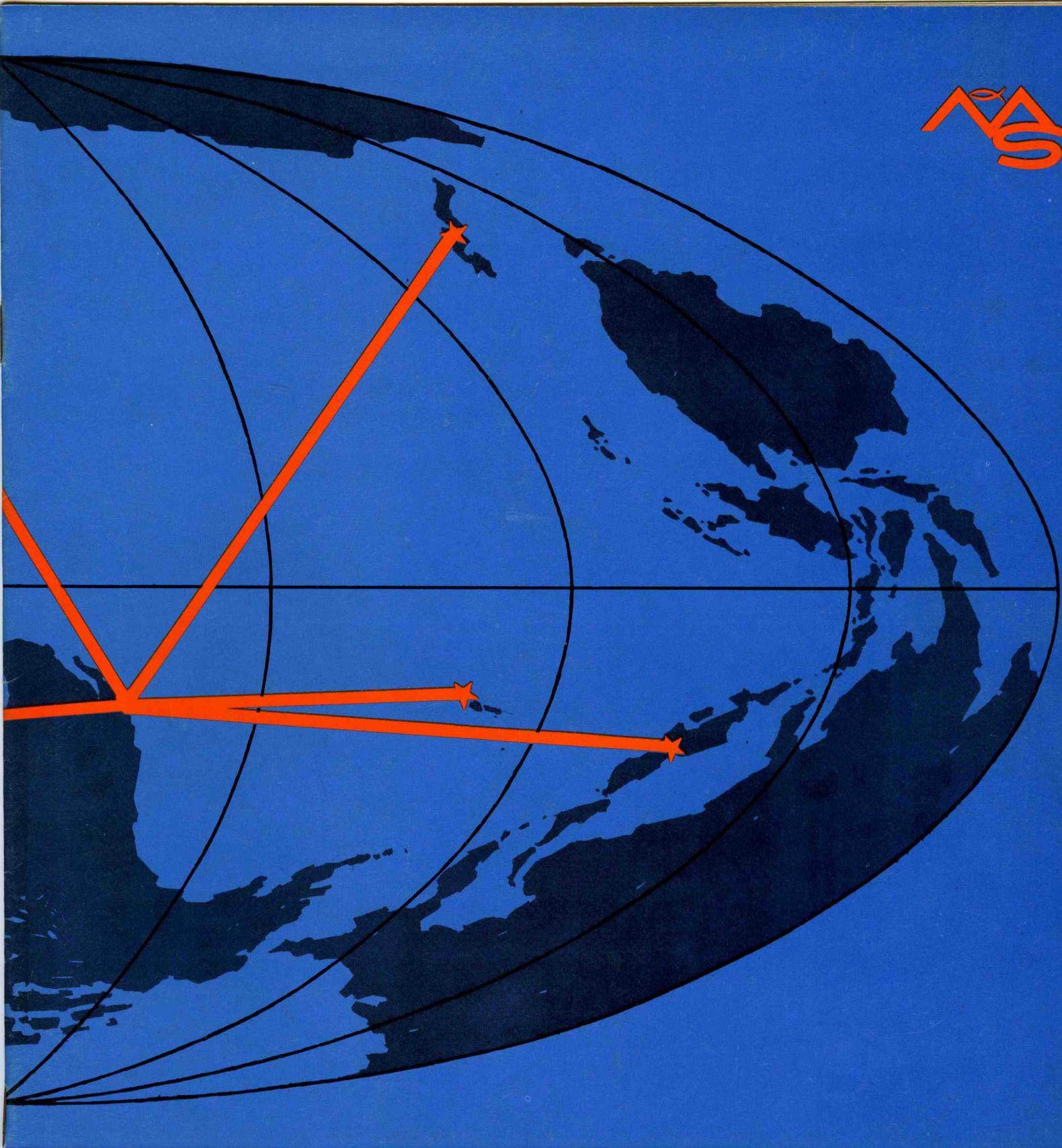
2545 **\$140.00**

DIVING HANDBOOKS

DIVING MANUAL — "UNDERWATER RECREATION"

A 72 page technical diving manual, illustrating the proper use of the underwater breathing equipment and skin diving techniques. Charts, photographs and illustrations for thorough readability.

2550 DIVING MANUAL **\$2.50**



**THE WORLD'S MOST ADVANCED
DIVING EQUIPMENT**