

**People Who KNOW
Always Say...**

S SPORTSWAYS



1971 CATALOG
\$1.00



SPORTSWAYS

THE ONLY "ALL-AMERICAN DIVING LINE"!

WHAT'S SO IMPORTANT ABOUT being the only All-American Diving Line in the world of scuba? Well, it's more than an advertising slogan. It means something — something very important.

THE PHRASE IS A REGISTERED SPORTSWAYS TRADE-MARK that assures you each and every piece of equipment is the top of the line in quality. Every item you find in this new, 1971 catalog is all American made. That means we use the finest materials available, combined with the most modern manufacturing techniques and stringently controlled workmanship. You'll find no imports or replacement materials to mar the superior professionalism of Sportsways diving equipment.

WHY IS THE "ALL-AMERICAN DIVING LINE" IMPORTANT TO YOU? We ask you to compare the materials, craftsmanship and performance of the 1971 Sportsways product line with anything else available. We feel confident you'll agree the All-American trademark provides unmatched quality for all scuba enthusiasts.

photo & cover : DICK ANDERSON

contents

WELCOME TO THE INNERSPACE WORLD OF SPORTSWAYS '71! Over 20 years of research, development and testing by one of the pioneer companies in the scuba diving field have resulted in the products presented in this catalog. The meticulous attention to detail in the manufacture of each product bearing the Sportsways name is just one of the many reasons why people who know, always say—Sportsways!

Snorkels	3	Guns & Sea Spears	16
Masks	4 - 5	Knives	17
Tanks & Boots	6 - 7	Wet Suits	18
Swim Fins	8	Back Packs	19
"707" Fins	9	Divers Jackets	20
Valves	10	Safety Vests	20
Regulators	11 - 14	Accessories	21
Sea-View Gauge	15	Hookah Equipment	22
Meters & Gauges	15	Sportsways Poster	23

snorkels

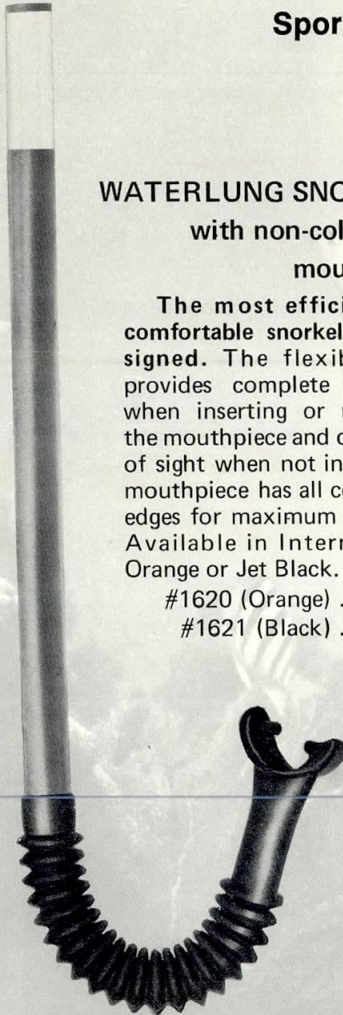
Sportsways offers a complete line of snorkels for all diving enthusiasts, each one constructed of the highest quality Pittman rubber.

WATERLUNG SNORKEL, with non-collapsible mouthpiece

The most efficient and comfortable snorkel ever designed. The flexible hose provides complete freedom when inserting or removing the mouthpiece and drops out of sight when not in use. The mouthpiece has all contoured edges for maximum comfort. Available in International Orange or Jet Black.

#1620 (Orange) . . . \$3.30

#1621 (Black) . . . \$3.30



All Sportsways Snorkels feature

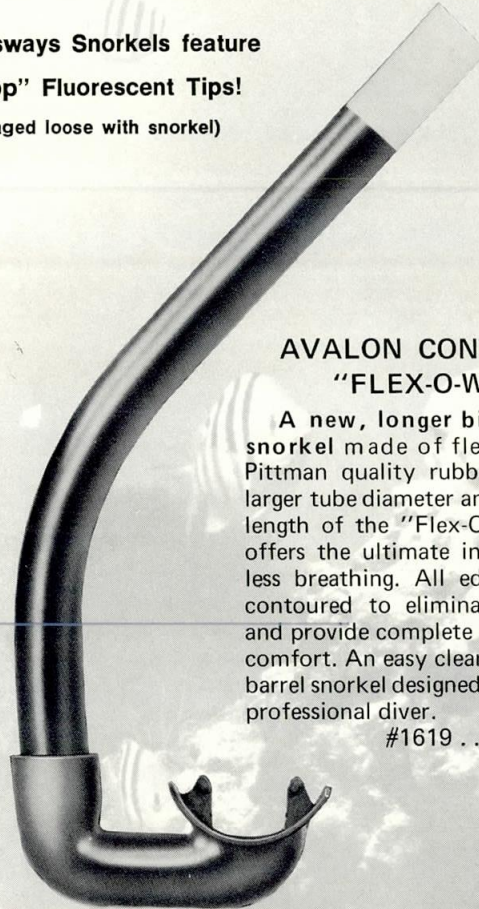
"Sea-Top" Fluorescent Tips!

(Packaged loose with snorkel)

AVALON CONTOUR "FLEX-O-WRAP"

A new, longer big-tube snorkel made of flex hard Pittman quality rubber. The larger tube diameter and extra length of the "Flex-O-Wrap" offers the ultimate in effortless breathing. All edges are contoured to eliminate drag and provide complete wearing comfort. An easy clearing, big barrel snorkel designed for the professional diver.

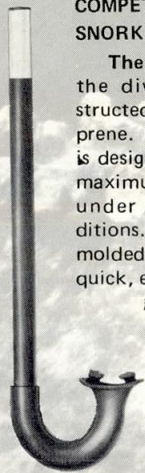
#1619 . . . \$5.00



COMPETITOR SNORKEL

The only snorkel in the diving field constructed entirely of neoprene. The Competitor is designed to provide a maximum volume of air under all diving conditions. The one piece, molded elbow allows for quick, easy clearing.

#1614 . . . \$3.30



CATALINA SNORKEL

Designed for the professional diver, this snorkel is constructed of top quality jet black rubber and comes equipped with a bel-lows-type mouthpiece.

#1623 . . . \$2.65



AVALON "CLEAR-EASE" SNORKEL

Made of the highest quality Pittman rubber, the Clear-Ease has the popular Sportsways Comfort-Fit mouthpiece. Special construction allows for effortless breathing and easy clearing.

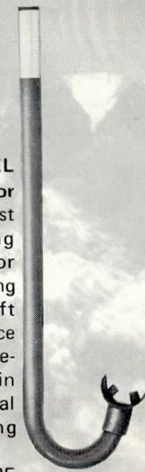
#1622 . . . \$3.30



DOLPHIN JR. SNORKEL

The ideal snorkel for the junior divers just entering the exciting world of skin diving, or for female scuba diving fans. It features a soft contoured mouthpiece and an all-rubber, one-piece tube. The Dolphin provides a professional look for new diving enthusiasts.

#1900 . . . \$1.85



masks

180° vision area!



pulls on metal, not rubber!

clear downward vision!

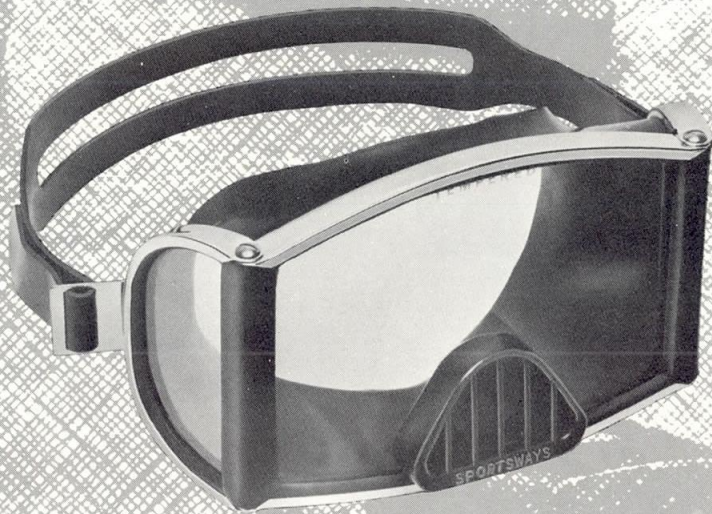
SCENE-O-RAMA[®] with Purge

Sportsways presents the Scene-O-Rama 180° mask, custom made by craftsmen for professionals. The Scene-O-Rama offers unmatched peripheral vision, plus an exclusive purge placement for clear downward viewing.

The unique design features pro-style headstraps which attach directly to the stainless steel mask bands, eliminating all pulling stress from the rubber mask body.

Made from specially compounded Pittman rubber the unique Sportsways construction provides a perfect seal, while the large purge valve allows for instant clearing.

#1654 . . . \$21.00



SCENE-O-RAMA[®] without Purge

The same high quality Scene-O-Rama design without the non-return exhaust valve. Features a pro-style split headstrap, adjustable at both sides. The Scene-O-Rama provides minimum displacement combined with an extremely comfortable fit.

#1655 . . . \$18.50



WATERLUNG[®]MASK

Sportsways "close-to-the-face" design increases vision, while allowing minimum displacement. The extruded foam neoprene edge provides a perfect seal and maximum wearing comfort. Non-return exhaust valve for instant clearing.

#1626 . . . \$16.50





SPORTSWAYS OFFERS A COMPLETE LINE of mask designs to suit anyone interested in the fascinating world of diving.

EACH MODEL FEATURES specially-compounded Pittman rubber construction for rugged durability; plus, the uniquely designed and very exclusive Sportsways "Super-Seal".

STEP UP AND TAKE YOUR CHOICE of any of Sportsways top quality, all-American diving masks.

(1).-AVALON®PURGE MASK

One of the most popular masks in the diving field, the Sportsways Avalon features an exceptionally large purge valve for quick, easy clearing. Exclusive "Close-to-the-face" design offers extra vision

and minimum displacement. The pro-style headstrap is attached to the anodized mask bands, eliminating all pulling stress on the rubber mask body.

#1656 . . . \$10.20

(2).-AVALON®, without Purge

The same high quality construction and design features of the Avalon, but designed for those divers who prefer a mask without purge valves. Constructed of specially compounded Pittman rubber.

#1657 . . . \$8.70

(3).-VISTA-VUE MASK

The Vista-Vue's slanted lens design provides an improved viewing area. The mask's short top skirt aids greatly in sealing during ascents. A stainless steel rim and screw adjustment locks into an assured safety position. The Vista-Vue is available in top quality blue rubber compound or black neoprene.

#1650 (Blue) . . . \$6.90

#1651 (Black) . . . \$6.90

(4).-EQUALIZER MASK

This exclusive Sportsways design features a slanted "Vista-Vue" type lens. The specially deep-set, easy-to-reach finger pockets permit exceptionally quick pressure relief without any danger of breaking the mask seal. Available in French Blue or Black.

#1652 (Blue) . . . \$7.50

#1653 (Black) . . . \$7.50

(5).-EQUALIZER PURGE MASK

The same "Equalizer" slanted lens design, but featuring an extra-large purge valve for instantaneous clearing. Offering the extremely comfortable Sportsways "Super-Seal", this mask is perfect for extended dives.

#1628 . . . \$8.90

REMEMBER: Every Sportsways Mask features a tempered safety lens. Don't fail to check on this important feature before diving with any mask.



tanks

Single & Double 38's



SPORTSWAYS SINGLE AND DOUBLE 38 cu. ft. TANKS are all new and specially designed for diver comfort. A twin '38 assembly combines maximum bottom time with extreme light weight and fatigue reducing wear.

THE SPORTSWAYS 38's ARE IDEAL for a variety of underwater uses. Easy-to-wear for youngsters, they're also perfect for female scuba divers who don't relish the heft of standard 72 cu. ft. tanks. The easy to handle, compact size suits the many scuba diving boat owners who want out-of-the-way, on-board storage.

OF COURSE, THEY'RE THE SAME HIGH QUALITY of all Sportsways Tanks. Fully galvanized to prevent corrosion and featuring a 15/16" opening with "O" ring seal straight thread.

COMFORTABLE "ECONO" & "CONTOUR" BACK PACKS are available for both single and twin '38 assemblies.



'38 TANK PRICES		
701-38	Bare Tank, Galv.	\$ 65.60
704-38	SJ Valve w/Galv. 38 Tank, Assembled	\$106.50
708-6	SJ2 Valve w/Double Galv. 38 Tanks & #1206 Contour Pack	\$243.60
703-38	SK Valve w/Galv. 38 Tank, Assembled	\$ 87.00
708-5	SK2 Valve w/Double Galv. 38 Tanks & #1206 Contour Pack	\$220.80



tank prices

71.2 cu. ft. Tanks with 15/16" Opening, 3/4" Straight Pipe Thread

TANKS BARE

701-1	Bare Tank, Galv.	75.00
701-2	Bare Tank, Yellow	83.40
701-3	Bare Tank, Orange	83.40
701-4	Bare Tank, Black	83.40

SK TANK ASSEMBLY

702-1	SK Valve w/Galv. Tank, Assembled	95.00
702-2	SK Valve w/Yellow Tank, Assembled	104.20
702-3	SK Valve w/Orange Tank, Assembled	104.20
702-13	SK Valve w/Black Tank, Assembled	104.20
708-1	SK2 Valve w/Double Galv. Tanks & #1206 Contour Pack	239.00
708-2	SK2 Valve w/Double Yellow Tanks & #1206 Contour Pack	255.60
708-3	SK2 Valve w/Double Orange Tanks & #1206 Contour Pack	255.60
708-4	SK2 Valve w/Double Black Tanks & #1206 Contour Pack	255.60

SJ TANK ASSEMBLY

702-4	SJ Valve w/Galv. Tank, Assembled	115.20
702-5	SJ Valve w/Yellow Tank, Assembled	124.00
702-6	SJ Valve w/Orange Tank, Assembled	124.00
702-14	SJ Valve w/Black Tank, Assembled	124.00
708-7	SJ2 Valve w/Double Galv. Tanks & #1206 Contour Pack	262.00
708-8	SJ2 Valve w/Double Yellow Tanks & #1206 Contour Pack	280.00
708-9	SJ2 Valve w/Double Orange Tanks & #1206 Contour Pack	280.00
708-15	SJ2 Valve w/Double Black Tanks & #1206 Contour Pack	280.00

ACCESSORIES

1117	Pull Rod "SJ" Valve	1.20
1204-22	Pull Rod for Cam Pack	1.40
801-1	"O" Ring, Valve to Tank, 15/15" Opening	.35
801-2	"O" Ring, Regulator to Valve, 15/16" Opening	.35



IN 1961 SPORTSWAYS INTRODUCED a line of diving tanks made of chrome molybdenum steel, featuring hot-dipped, extra-heavy galvanized exteriors to combat a dangerous corrosion problem that was stymying the sport of diving. It was an all-important scuba advancement.



IN THE 10 YEARS SINCE we've been refining our materials and manufacturing techniques to provide you with the very best, up-to-date product available.

NOW, IN 1971, we offer a complete line of safety designed tanks, all specifically manufactured for the professional diver.

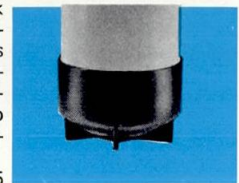
SPORTSWAYS TANKS FEATURE a 15/16" opening with "O" ring seal straight thread. This is the system designed especially to meet the rigid military specifications for pressure seals (MIL-P-5514).

WHEN A SPORTSWAYS TANK is empty the valve may easily be removed for visual inspection without any special tools. For additional safety, Sportsways Valves feature an exclusive "Safety-Port" to vent off pressure and provide a warning against accidental removal should any pressure remain in the tank.

72's or 38's, WE FEEL YOU'LL AGREE Sportsways is your best diving buy. You can't discount quality.

WATERLUNG TANK BOOT

A protective boot that fits perfectly on all standard diameter cylinders. Specially compounded synthetic Cyclocac will not mark or mar any surface. Sportsways flat bottom design always allows cylinder to remain in vertical position. #1050 . . \$2.95



Waterlung® floating fins

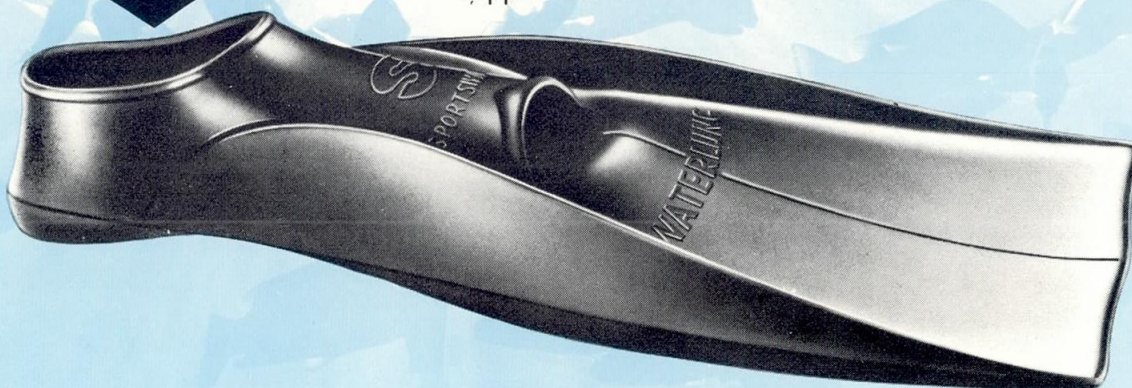
FOR YEARS SPORTSWAYS WATERLUNG SWIM FINS HAVE BEEN THE STANDARD OF THE DIVING INDUSTRY. Through the years hundreds of thousands of Pittman Rubber fins have been marketed, the leader in the field by a substantial margin.



WATERLUNG "HEEL-HUGGER" FLOATING FINS have been designed for those divers who prefer a full foot fin, but still demand the maximum in easy-wearing power. They offer a tapered full-foot pocket that provides an unequalled, fatigue-reducing Sportsways "Sure-Fit" for all divers, while delivering complete protection out of the water. Even on extended dives and in rough areas the special foot pocket holds snugly and comfortably.

ALL WATERLUNG FINS FEATURE ADDED BLADE LENGTH and tapered, extra-high external ribs for more power with less effort. "Heel-Huggers" are manufactured from specially compounded Pittman rubber, durable enough to last you a lifetime.

The
"Heel-Hugger"



AVAILABLE IN FLOATING BLACK OR FLOATING BLUE. Check out Sportsways Waterlung Fins at your local diving center today—Just ask for the "Heel-Hugger", it's as comfortable as an underwater bedroom slipper.

WATERLUNG FLOATING JET BLACK FINS

#1512	Regular, Size 4 - 5	\$10.45
#1513	Regular, Size 5½ - 6½	\$11.80
#1514	Regular, Size 7 - 8	\$12.75
#1515	Regular, Size 8½ - 9½	\$13.25
#1516	Regular, Size 10 - 11	\$14.85
#1517	Giant, Size 11½ - 13	\$16.40
#1518	Giant, Size 13½ - 16	\$19.30

WATERLUNG FLOATING BLUE FINS

#1522	Regular, Size 4 - 5	\$10.45
#1523	Regular, Size 5½ - 6½	\$11.80
#1524	Regular, Size 7 - 8	\$12.75
#1525	Regular, Size 8½ - 9½	\$13.25
#1526	Regular, Size 10 - 11	\$14.85
#1527	Giant, Size 11½ - 13	\$16.40
#1528	Giant, Size 13½ - 16	\$19.30

For Junior Fin Fans . . . A SMALLER SIZE, FLOATING BLUE FIN offering the same professional design and construction of Waterlung senior sizes. The Dolphin features the back tapered, "heel-hugger" design to eliminate slipping and chafing, while providing maximum wearing comfort.



The Same All-American Quality!

WATERLUNG "DOLPHIN" FLOATING BLUE FINS

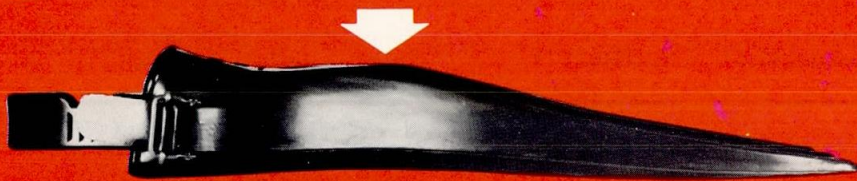
#1930	Size 2 - 3	\$ 8.40
#1931	Size 3 - 4	\$ 8.40
#1932	Size 4 - 5	\$ 8.40

IT'S YOUR BEST BUY for the ever growing number of young flipper fans. A small fin that doesn't sacrifice anything in quality. Just compare the Dolphin with others—you'll see.



"707" fins

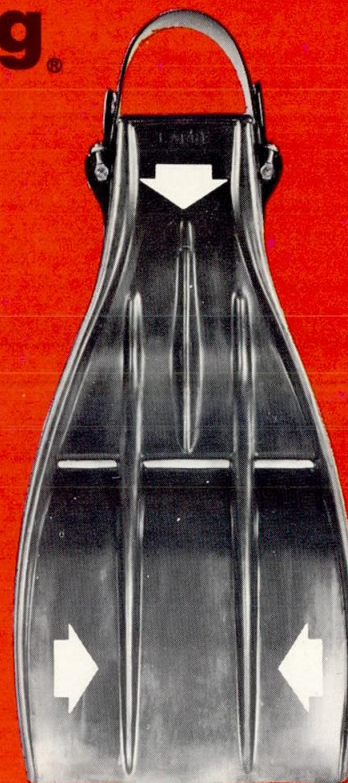
Sportsways Waterlung "707" Floating Fins give you more



here

Pat. # 2,779,077

The "UNBREAKABLES"
Provide More Power &
Thrust. Just try the
"unbreakable rib" test with any
other fin making the same
claim!



here



Pat. # 219,560

and here!

SPORTSWAYS INTRODUCED THIS MAJOR BREAKTHROUGH in modern underwater fin propulsion in 1970. Now, the ultra-powerful "707" is the strongest, fastest growing year-old-baby in the undersea world of 1971.

IT WAS DESIGNED for that special breed of diver who needs instant speed, to catch that prize winning photo or trophy fish. Or, who just wants to get where he's going in a hurry and with ease.

THE SPECIAL DESIGN AND CONFORMATION of the Waterlung "707" provides unmatched thrust and power; combined with unique, fatiguing

reducing comfort. The patented locking device assures a precise fit that adjusts to every foot and fits perfectly under any diving condition. Wearing boots or not, the same fin fits snugly and comfortably.

THE EXTENDED RIBS of the Waterlung "707", both top and bottom, provide an extra stiffening agent for the specially compounded, top quality Pittman rubber to deliver the maximum in thrust with the absolute minimum of effort.

SPECIALY CONTOURED, EXTRA-DEEP flow-through vents create an unheard of explosion of power without any wasted effort.

SPORTSWAYS WATERLUNG
"707" FLOATING FIN

#707 . . . \$22.00

#707MB (Blue) . . . \$24.00



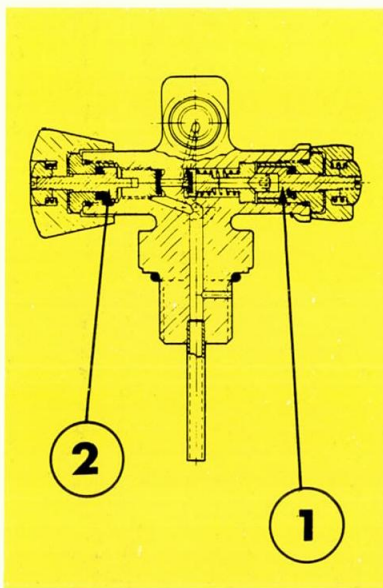
IT'S NOT JUST A NEW NAME—THIS ONE IS REALLY DIFFERENT!

valves

The First In The Field And, in 1971, Still The Finest!

WHEN YOU CONSIDER A DIVING VALVE you should take a great many things into account. It's as important as your regulator, a vital portion of your life-support system. That's the prime reason you want the absolute best available.

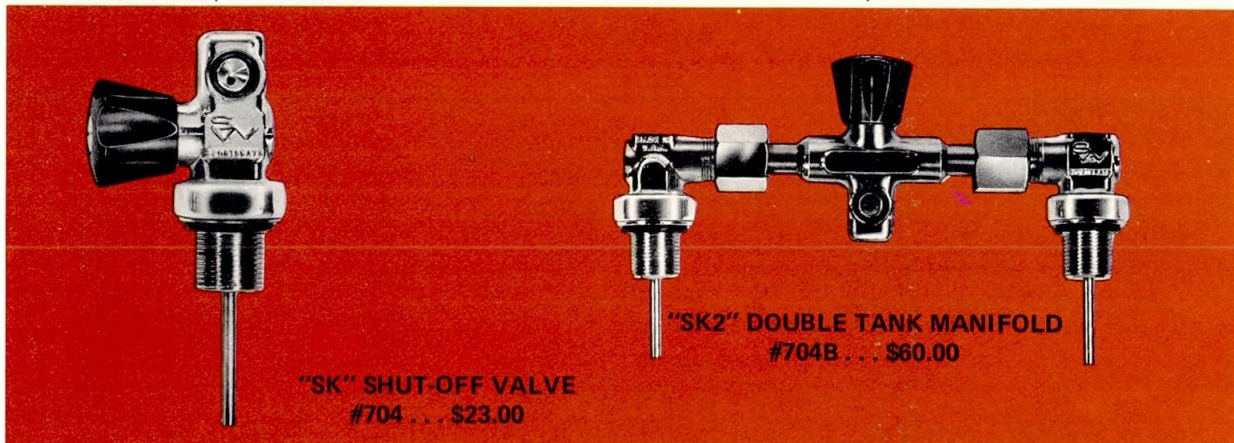
SPORTSWAYS DESIGNED THE FIRST TANK VALVES ever produced specifically for scuba diving. There are two basic reasons why they remain superior in 1971. (1) ONLY SPORTSWAYS UTILIZES a reserve mechanism of all stainless steel and (2) SPORTSWAYS IS THE ONLY MANUFACTURER to utilize stainless steel construction in the critical shut-off system. Ask any unbiased professional diver just how essential these two points are in the



manufacture of a safety-first, top quality valve!

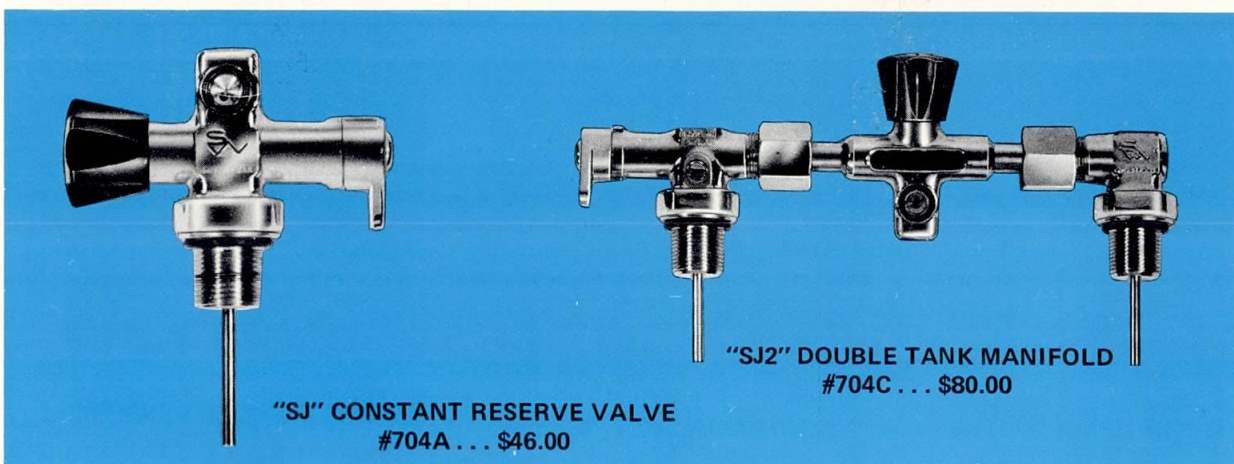
ANOTHER SPORTSWAYS FIRST is the patent pending, side mounting design of all single tank valves to insure absolute ease in regulator positioning. As an extra engineering bonus, 90% of all Sportsways valve parts are interchangeable and, of course, all American made.

THERE'S LITTLE DOUBT A SPORTSWAYS VALVE may cost you a dollar or two more. Don't hesitate about that at the counter of your local diving center. When you're 100 feet below the surface, you'll agree it's the best \$2.00 buy you ever made.



"SK" SHUT-OFF VALVE
#704 . . . \$23.00

"SK2" DOUBLE TANK MANIFOLD
#704B . . . \$60.00



"SJ" CONSTANT RESERVE VALVE
#704A . . . \$46.00

"SJ2" DOUBLE TANK MANIFOLD
#704C . . . \$80.00

ALL SPORTSWAYS VALVES FEATURE A STRAIGHT PIPE THREAD FOR 15/16" TANK OPENINGS!



Waterlung® regulators

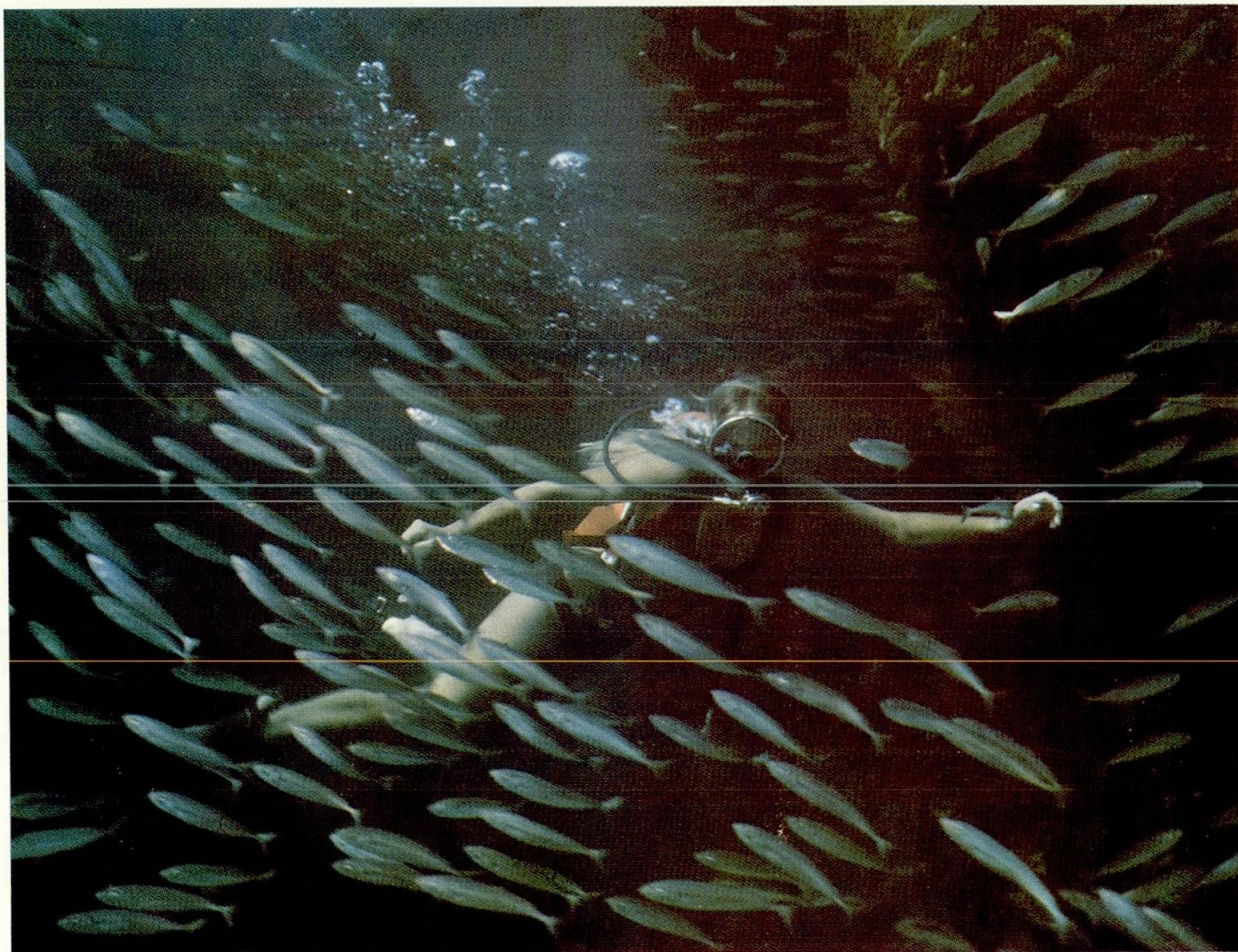


photo: Dick Anderson

SPORTSWAYS UNDERSEA WORLD OFFERS TWO BASIC CONCEPTS IN REGULATOR DESIGN. Thorough underwater atmospheric testing, under every conceivable condition, has resulted in the superbly engineered, top quality, all American made diving hardware that carries the name Sportsways Waterlung.

SPORTSWAYS DESIGNED & DEVELOPED THE FIRST SINGLE HOSE, TWO STAGE REGULATOR IN THE DIVING INDUSTRY. It was a tremendous accomplishment for the scuba enthusiast of today. Over 20 years of continuing research and testing have led to the regulators featured in our 1971 product line.

EVERY SPORTSWAYS REGULATOR FEATURES: (1) Internal parts of all stainless steel. (2) All triple-chrome plated parts, inside & out. (3) All moving parts coated with the special anti-friction agent, "Dry-Lube". (4) The lightest second stage ever designed.

THE BALANCED FIRST STAGE of all Sportsways regulators allows the secondary air pressure (which you breathe) to remain constant regardless of the air pressure in your diving tank. It reduces the effort necessary to receive an adequate air supply.

ALL SPORTSWAYS SECOND STAGES ARE "DOWNSTREAM". Quite simply, this means the air supply on the ambient side of your regulator's metering device is always closed until you breathe or "demand" a supply of air. Regulators using opposing principles require a con-

stant pressure from your diving cylinder to accomplish this function and may waste your air supply.

SPORTSWAYS MANUFACTURES THEIR "ALL-AMERICAN" REGULATORS with a low cost maintenance factor in mind. We know that you want a regulator to work at maximum efficiency with a minimum of upkeep, regardless of the number or type of dives you make. A combination of top grade materials, basic construction simplicity and stringent quality control allows us to offer you regulators featuring the best maintenance records in the scuba diving world.

EVERY SPORTSWAYS REGULATOR has been designed for safety, precision, durability and comfort. Try them, compare them with others, **we think you'll agree they're the best diving buddies you'll ever meet.**



Waterlung® regulators



SPORTSWAYS ATM-1000®

... A New, Improved Regulator Design For The Jet-Age '70's!

ANOTHER SCUBA-ENGINEERED REGULATOR FEATURING a direct air flow to its first stage adjustable piston, guaranteeing a constant working pressure for completely effortless breathing at all times.

AN ADDITIONAL FIRST STAGE VENT is provided to connect one of your most important safety accessories, a Sportsways "Sea-View Gauge". The ATM-1000 has a stainless steel piston and main body of solid Navy brass forging. A teflon wiper ring prevents any foreign particles from interfering with the dependable "O" ring seal.

THE SPORTSWAYS SECOND STAGE FOR 1971 remains the lightest and most comfortable available. It completes the package to make a truly magnificently performing regulator.

Pat. # 218, 921

Mechanical Patent Granted

#1380 ... \$112.00

SPORTSWAYS NAVY UNIT III®

... An Outstanding "Easy-Breathe" Professional Regulator!

THE BALANCED FIRST STAGE of this smooth-breathing regulator features Sportsways positive cam-activated, spring-loaded reserve mechanism as an integral part of its body.

THE SPECIAL SECOND STAGE DESIGN has a refined Downstream Demand Valve to insure extremely easy breathing, regardless of your tank pressure supply.

ALL MOVING PARTS are of top quality stainless steel, treated with Sportsways "Dry-Lube" to reduce wear to an absolute minimum, and triple plated chrome, inside and out. Try The Navy Unit III at your local diving center—Sportsways wants you to compare.

Pat. #'s 3,147,761 & 195,070

#1375 ... \$114.00



Waterlung® regulators



SPORTSWAYS SPORT DIVER II®

. . . The World's Most Popular Scuba Diving Regulator!

SPORTSWAYS EXCLUSIVE "EASY-BREATHE" VALVE ASSEMBLY has meant smooth underwater breathing for over a decade and made the Sport Diver II the best selling single hose regulator on the market today.

THE "ALL-AMERICAN" QUALITY of this regulator features a solid brass forging and chrome plating inside and out. Of course, it offers a balanced first stage and downstream second stage.

IT'S THE IDEAL REGULATOR for the sport diver, the consistent leader in the exciting undersea world of scuba.

#1301 . . . \$87.00



SPORTSWAYS ATM-750®

. . . See Us At 200 Feet, We'll Show You The Difference!

THE 1971 ATM-750 IS NEW IN CONCEPT and specifically engineered to meet the most stringent Scuba requirements. It offers the world's first balanced, piston-adjustable first stage assembly. This means you are guaranteed a maximum flow of air with a minimum of breathing effort at all depths, under all diving conditions, regardless of tank pressure.

THE UNIQUE FIRST STAGE features two extra, built-in, pressure ports to attach a Sea-View Gauge and spare second stage. This Sportsways "octopus survival system" is an ideal unit for cave diving. Serving as a back-up life support system, it is especially valuable in buddy-breathing situations and as a training regulator.

THE ULTRA-LIGHT & COMFORTABLE SECOND STAGE combines with the newly developed first stage to give the ATM-750 the lowest possible upkeep factor. This is a modern, design-breakthrough regulator made to take it all and still function at the highest efficiency with a minimum maintenance cost.

Pat. # 218,921

#1385 . . . \$120.00

Mechanical Patent Granted

Waterlung® regulators



SPORTSWAYS ATM-500®

. . . A Top-Flight, Quality Regulator At An Economy Price!

THE ATM-500 FEATURES a pre-set "piston-type" first stage that offers the utmost in undersea reliability, while remaining extremely simple in operation. It gives you the maximum in quality regulator design combined with an extremely low maintenance cost.

THE DOWNSTREAM SECOND STAGE is of high-grade stainless steel and delivers the ultimate in lightweight comfort and easy purging.

THE ATM-500 HAS BECOME known throughout the diving fraternity as an easy-breathing, professional regulator by any and all standards.

#1390 . . . \$73.00

SPORTSWAYS HYDRONAUT II®

. . . A Proven Standard Of The Undersea World!

A NEW CONCEPT IN BALANCED BREATHING permits constant pressure and flow throughout the balanced first stage of the Hydronaut II, regardless of existing tank pressure.

THE SECOND STAGE DOWNSTREAM VALVE delivers 22 cubic feet of air with a minimum of diver effort. The Sportsways "Easy-Breathe" concept refuses to let you exert yourself using a Waterlung regulator.

ALL METAL PARTS are stainless steel for the highest tensile strength. The Hydronaut II is triple chrome plated inside and out and all moving parts are coated with anti-friction, "Dry-Lube".

#1340 . . . \$96.00

REMEMBER, SPORTSWAYS DESIGNED & DEVELOPED THE FIRST SINGLE HOSE, TWO STAGE REGULATOR IN THE DIVING INDUSTRY. All Sportsways regulators feature: (1) The lightest second stage ever designed. (2) Internal parts of all stainless steel. (3) All parts triple chrome plated inside & out. (4) All moving parts coated with the special anti-friction agent, "Dry-Lube".



meters & gauges

SPORTSWAYS SEA-VUE GAUGE®

Only the Sportsways Sea-Vue gives you all the extras: Chrome-plated Navy brass case & bezel, all "O" ring seals, luminous dial, durable nylon braided hose, non-corrosive nylon buckle & fastener, adjustable rubber strap and pressure tested to 6,000 P.S.I.

The Sea-Vue Gauge accurately indicates your remaining air supply at all times, allowing you to plan your dive minute-to-minute, simply and safely.

#1401 . . . \$33.50
 #1401-S (with Swivel) . . . \$36.90



HERE'S ANOTHER SPORTSWAYS FIRST.

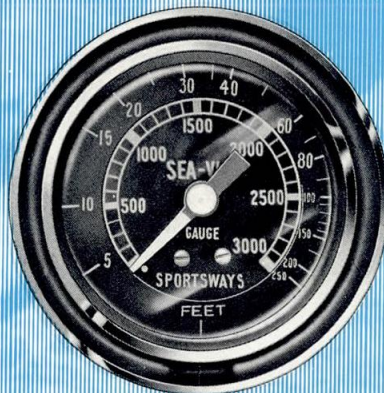
We coined the word, developed the concept and produced the world's finest under-water pressure gauge. It's probably the most important precision instrument ever designed specifically as a diving safety factor. More and more diving instructors are making the "Sea-Vue" Gauge a mandatory accessory for newly graduated divers.

**First
 In Concept,
 Finest In Practice!**



Sportsways extremely accurate depth meter has been carefully engineered for all diving requirements. The exclusive Sportsways construction eliminates corrosion problems, provides lightweight wearing comfort, is easy-to-read and has no moving parts to breakdown.

#1412 . . . \$6.00



SEA-VUE GAUGE® with Depth Meter

Combines the unique Sea-Vue Gauge with Sportsways extremely accurate depth meter. A perfect combination of two of your most important diving accessories. Remember, there's only one original Sea-Vue Gauge, and it's only available from Sportsways.

#1401-M . . . \$39.60

#1401-MS (with Swivel) . . . \$43.00

A Sportsways Depth Meter designed into a Sea-Vue Gauge bezel. If you already own a Sea-Vue and wish to convert it into a combination pressure and depth meter, this special adapter will fit all existing models.

#1401-MA . . . \$9.30

Pat. # 3,528,290



A comfortable, highly accurate depth gauge featuring an "O" ring seal gauge cap for a completely pressure proof seal. The luminous markings and indicator make for easy underwater reading and the high-impact Cyclocac case assures rugged, long life.

#1411 . . . \$13.70

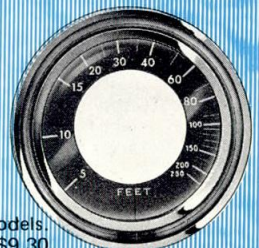


photo: Paul Tzimoulis

spear guns & spears

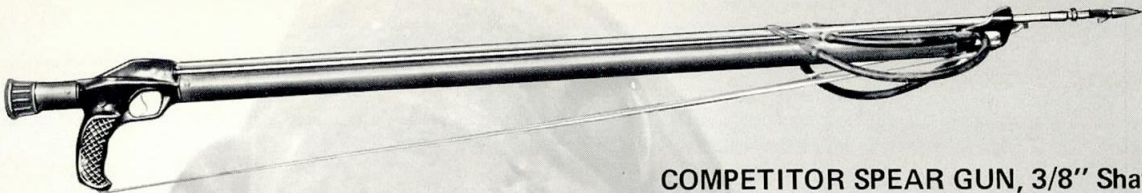
The Secret Is In The Trigger!

IT'S SPORTSWAYS SPECIAL DESIGN and Construction That Makes The "Competitor" and "Sportsman" Shoot Straighter Than The Rest. Sportsways successful record in spear fishing competition around the world speaks for the outstanding performance of these two double-tough underwater weapons. They combine durability & power with a minimum of maintenance requirements.

CHECK THESE SPECIAL SPORTSWAYS FEATURES: (1).-A cocking stock for better balance and accuracy, plus much easier loading. (2).-An automatic line release to eliminate drag and

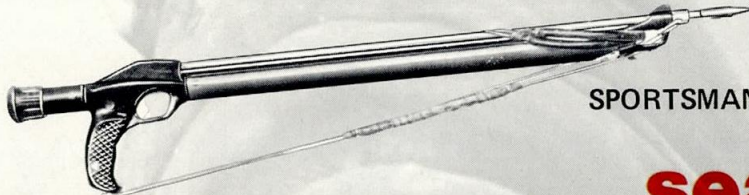
accuracy losing veer. (3).-A Stainless Steel Shaft featuring Sportsways "Safety Notch" to eliminate accidental firings. (4).-A fool-proof safety design, with all stainless steel internal parts. (5).-A bigger 1-1/4" barrel. (6).-Special trigger release leverage system to eliminate trigger pull, no matter how many slings you're using. (7).- "O" ring seals in the barrel, the only absolute seal against water and pressure. (8).-High-impact Cyclocac handles and muzzles to eliminate internal corrosion and provide the ultimate in lightness and easy handling. (9).-Spear Guns that float after firing.

NINE BIG REASONS why your best buy is always from the Sportsways arsenal of underwater weaponry.



COMPETITOR SPEAR GUN, 3/8" Shaft
#1635 . . . \$54.00

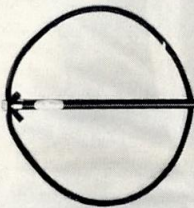
* Spear Head Stored
in Gun Butt.



SPORTSMAN SPEAR GUN, 5/16" Shaft
#1636 . . . \$49.95

sea spears

IF SPEARS ARE YOUR UNDERWATER HUNTING SPECIALTY here are the finest available. All Sportsways Sea Spears feature a solid fiberglass rod, with a Power Sling of rugged surgical rubber. Each fitting is custom manufactured of corrosion resistant stainless steel. All have American thread fittings for the widest range of head selection. And, of course, they're all American made.

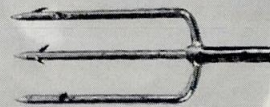


COMPETITOR SEA SPEAR

The spear for professional competition. Features a 3" slip tip detachable tri-cut spearhead and 7'6" length.
#719B . . . \$19.95

SPORTSMAN SEA SPEAR

3" slip tip detachable tri-cut spearhead and 5'6" length.
#719A . . . \$14.75



FROGMAN SEA SPEAR

Three-prong spear head and easy maneuvering 4' length.
#719 . . . \$9.90



2-barb, retractable
Spearhead, hardened
stainless steel.
#1635-52 . . . \$6.50



Single barb Spearhead,
stainless steel.
#1636-51 . . . \$2.10



Detachable Tri-Cut
Spearhead, stainless
steel.
#716 . . . \$5.00



3-Prong Trident Fork,
#710 . . . \$2.50



knives & sheaths



"DIVER" KNIVES

"NAVY" KNIVES



*** Sheath may also be worn on belt.



Sportsways offers two extremely popular blade patterns, both designed into your most versatile diving tool. The Sportsways shock resistant, one piece guard and handle may be used to pry, pound or double as an abalone iron. Each model is an extremely attractive, rugged working tool designed expressly for professional requirements. They're available in a rainbow of colors to suit every diver.

SPORTSWAYS "NAVY" KNIFE & SHEATH, features a specially shaped 7" hardened stainless steel blade. It has full-length cutting edge running to its tapered point, with a large serrated blade area for sawing.

SPORTSWAYS "DIVER" KNIFE & SHEATH has an extra wide 7" hardened stainless steel blade with a concave serrated area on the opposite edge. A very popular, unusually attractive, heavy-duty diving knife.

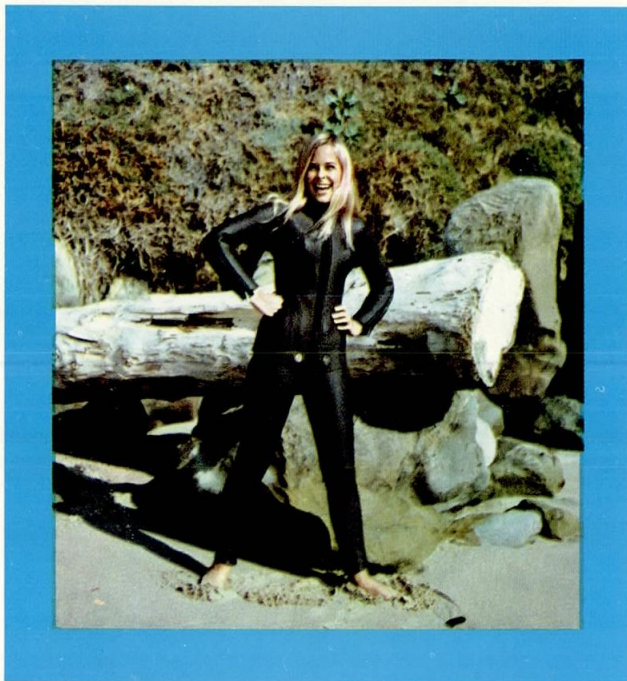
All Sportsways Knives are available with or without Steelhead Construction and come complete with a comfortable, injection molded, salt water resistant leg sheath.

photo: Expeditions Unlimited

#1630	Diver Knife w/Sheath, Black Handle	\$11.55	#1631	Navy Knife w/Sheath, Black Handle	\$11.55
#1640	Diver Knife w/Sheath, Orange Handle	\$11.55	#1641	Navy Knife w/Sheath, Orange Handle	\$11.55
#1640Y	Diver Knife w/Sheath, Yellow Handle	\$11.55	#1641Y	Navy Knife w/Sheath, Yellow Handle	\$11.55
#713-3	Diver Knife w/Sheath, Steelhead Black Handle	\$14.90	#713-5	Navy Knife w/Sheath, Steelhead Black Handle	\$14.90
#713-4	Diver Knife w/Sheath, Steelhead Orange Handle	\$14.90	#713-6	Navy Knife w/Sheath, Steelhead Orange Handle	\$14.90
#713-4Y	Diver Knife w/Sheath, Steelhead Yellow Handle	\$14.90	#713-6Y	Navy Knife w/Sheath, Steelhead Yellow Handle	\$14.90



wet suits & accessories



Sportsways Turtle Skin Wet Suits are designed for the comfort and durability demanded by the modern scuba diver. All Sportsways Suits, Boots, Contoured Hoods and 5-Finger Dexterity Gloves are made of soft, rugged, pliable Turtle Skin, with quality nylon lining for maximum warmth and comfort.

EXPOSURE SUITS

The new Two-Piece Underwater Exposure Suits feature five heavy duty zippers and Sportsways "form-fit" to eliminate irritating under-arm bulges. There are five sizes to choose from, all nylon lined and seam sewn throughout. Available in 3/16" & 1/4" material.

*Write factory direct for custom suit information.

HOODS

These nylon lined Turtle Skin hoods feature sewn seams at stress points and are specially contoured to assure a near perfect seal around the face and neck. They provide the utmost in comfort and practicality. 3/16" or 1/4" material, available in five sizes.

BOOTS

Save your feet with these nylon-lined, hard-sole, Turtle Skin boots. All seams are sewn at the vital stress points for long life. 3/16" or 1/4" available in seven sizes.

GLOVES

Sportsways Turtle Skin 5-fingered gloves provide all the dexterity needed by even the most demanding professional diver. 3/16" material available in five sizes.

EXPOSURE SUITS

3/16" Nylon Lined TURTLE SKIN

5030	Suit, X-Small	86.00
5031	Suit, Small	86.00
5032	Suit, Medium	86.00
5033	Suit, Large	86.00
5034	Suit, X-Large	86.00

1/4" Nylon-Lined TURTLE SKIN

5040	Suit, X-Small	95.00
5041	Suit, Small	95.00
5042	Suit, Medium	95.00
5043	Suit, Large	95.00
5044	Suit, X-Large	95.00

HOODS

3/16" Nylon-Lined TURTLE SKIN

5030-3	X-Small	9.50
5031-3	Small	9.50
5032-3	Medium	9.50
5033-3	Large	9.50
5034-3	X-Large	9.50

1/4" Nylon-Lined TURTLE SKIN

5040-3	X-Small	10.00
5041-3	Small	10.00
5042-3	Medium	10.00
5043-3	Large	10.00
5044-3	X-Large	10.00

BOOTS

3/16" Nylon-Lined TURTLE SKIN, Hard Soled

5030-4	X-Small (5 - 6)	10.30
5031-4	Small (7 - 8)	10.30
5032-4	Medium (8 - 9)	10.30
5033-4	Medium Large (9 - 10)	10.30
5034-4	Large (10 - 11)	10.30
5035-4	X-Large (11 - 13)	10.30
5036-4	Super X-Large (13 - 15)	10.30

GLOVES

3/16" Nylon-Lined TURTLE SKIN, Five Fingers

5030-6	X-Small	9.50
5031-6	Small	9.50
5032-6	Medium	9.50
5033-6	Large	9.50
5034-6	X-Large	9.50



SIZE CHART FOR SPORTSWAYS SUITS

	Extra Small	Small	Medium	Large	Extra Large
CHEST	31" 33"	34" 36"	37" 39"	40" 42"	43" 46"
WAIST	24" 26"	27" 29"	30" 32"	33" 35"	36" 38"
HEIGHT	5'2" - 5'7"	5'5" - 5'9"	5'7" - 6'0"	5'10" - 6'2"	6'0" - 6'4"



back packs



SPORTSWAYS CAMPAC II,[®] with Non-Slip Screw Adjustment

THE ABSOLUTE TOP OF THE LINE IN DIVING BACK PACKS. Members of the undersea fraternity throughout the world have named the Sportsways CampPac II the most comfortable and efficient pack available anywhere.

IT'S A SAFETY DESIGNED PACK featuring a stainless steel tank band, exclusive cam-action release and a contoured, anodized all-metal back plate. A simple screw adjustment allows easy tightening of the band for comfortable tank placement and eliminates any possibility of slippage.

THE HARNESS IS SPORTSWAYS INTERNATIONAL ORANGE Nylon Webbing to provide maximum strength and extremely fast drying action.

SPORTSWAYS EXCLUSIVE CAM-ACTION RELEASE permits tank mounting or removal to be accomplished in seconds. You won't believe the ease of handling this special Sportsways feature allows until you try it yourself.

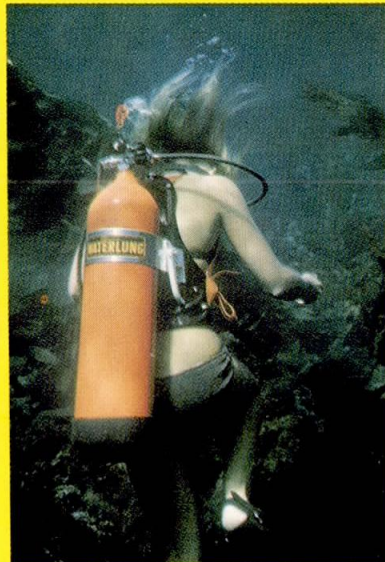
COMFORT AND SAFETY COUNT when you're exploring the fascinating world beneath the sea. Get the scuba back pack that provides both . . . the Sportsways CampPac II.

#1207 . . . \$36.00

Unheard of comfort & convenience for scuba enthusiasts!

Sportsways back packs are the rage of the sport—Just ask the man behind the counter at your local diving center!

photo: Dick Anderson



ECONO-PACK

THE QUALITY BACK PACK FOR THE ECONOMY MINDED DIVER. The Sportsways Econo-Pack is safety engineered and features durable, lightweight Cylolac construction.

THE NEW 1971 MODEL "ECONO" is available with the unique Sportsways Cam-Action Release feature for ultra-easy tank mounting. It comes fully equipped with a non-slip, black nylon harness and stainless steel quick-release buckle.

SPORTSWAYS ALL-AMERICAN QUALITY allows you to pay less and still receive the finest in safety and comfort.

#1208 (with Cam-Action) . . . \$26.50

ECONO-PACK, Without Cam-Action

#1209 . . . \$17.95

ECONO-PACK FOR DOUBLE TANK ASSEMBLY

#1210 . . . \$22.95

CONTOUR-PAC[®]

THIS SPORTSWAYS PACK FEATURES all the comfort and durability of the unique CampPac II, but without the exclusive cam-action release feature.

THE METAL BAND ADJUSTS with a single galvanized bolt to insure easy positioning and non-slip tightness. The International Orange harness is fast drying and ultra-durable.

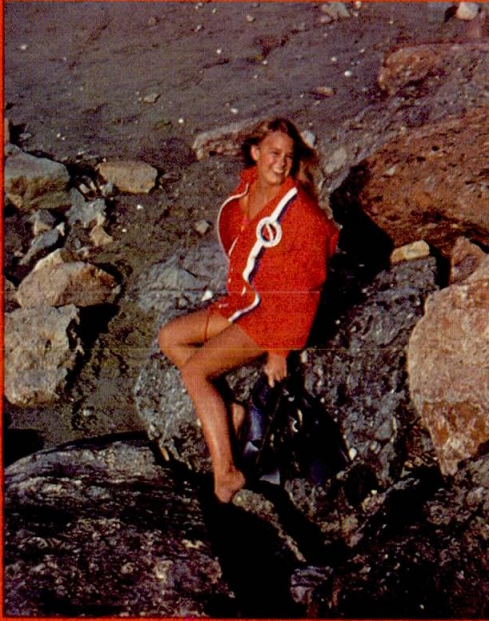
#1205 . . . \$25.50

CONTOUR-PAC FOR DOUBLE TANK ASSEMBLY

#1206 . . . \$33.50



divers jackets & safety vests



SPORTSWAYS SKIN DIVER JACKETS

SPORTSWAYS FASHION-DESIGNED DIVERS JACKETS are attention-getters on the beach or the boat. Specially made for Sportsways, these jackets combine attractiveness with all the practical requirements of a scuba diver. Comfortable and long-wearing, they're available in five sizes for all scuba enthusiasts.

IT'S A COLORFUL SKIN DIVERS RED, with Blue and White Striping, and comes complete with the distinctive Sportsways emblem.

#723A-1	Skin Diver Jacket—Small	\$15.95
#723A-2	Skin Diver Jacket—Medium	\$15.95
#723A-3	Skin Diver Jacket—Large	\$15.95
#723A-4	Skin Diver Jacket—X-Large	\$15.95
#723A-5	Skin Diver Jacket—X-Small	\$15.95

SPORTSWAYS NAVY SAFETY VEST

SPORTSWAYS BELIEVES YOU MUST NEVER COMPROMISE on quality in diving, since your very life may well depend on your equipment. We feel the Navy Safety Vest to be the unequalled and proven winner in the entire sport of diving. Safety designed and American manufactured, with every Sportsways extra.

THE NAVY SAFETY VEST is rugged nylon, impregnated with neoprene, to remain completely impervious to salt water, sun or snags. It's virtually the most durable material ever developed.

THERE ARE TWO INFLATION MECHANISMS. The replaceable, screw-in CO2 cartridge and a leak-proof oral inflation tube, with manual shut off. This tube may also be used to vent off excess pressure. The detonator on the reverse side was incorporated to eliminate the possibility of accidental entanglement.

"CENTER ZIP" DESIGN provides easy donning and exits, while eliminating uncomfortable bulk. Strap placement ensures safe, proper positioning and all strap tabs are double reinforced.

MAKE AN INVESTMENT IN YOURSELF and buy the best there is—Sportsways Navy Safety Vest.

#1800 . . . \$29.00



SPORTSWAYS DIVERS VEST

THE SAME HIGH QUALITY SAFETY EQUIPMENT, but in the popular "Mae West" design. This vest offers a complete CO2 automatic inflation system in addition to the "depress-to-inflate" manual oral inflation valve, which is very helpful in obtaining zero buoyancy.

THE DIVER VEST IS MADE OF long-lasting poplin material with fully bound edges. The adjustable waist strap allows this model to fit youngsters just entering the scuba field, as well as adults.

#1820 . . . \$23.25



AUTOMATIC INFLATION FOR LIFE VESTS

MANUFACTURED TO NAVY specifications on hardware for CO2 automatic inflation systems. It's a replaceable, screw-in type CO2 cartridge with a large, over-size 12 gram capacity.

#1800-35 . . . \$.90





PORT-A-LIFT

A submersible lifting device. Lifts anchors, motors, moorings, small boats, cannons, salvage of all kinds.

Use at any depth, any weight up to rated capacity. The 100 pounder uses only 3-1/2 cubic feet of air at a depth of 33' (about 2 minutes of your supply). The 200 pounder uses 7. Larger Port-A-Lifts call for the use of a spare tank.

Made of rugged vinyl and fully vented to prevent over-expansion during ascent.

- #721-5 (100 lbs.) . . . \$ 9.25
- #721-6 (200 lbs.) . . . \$18.55
- #721-7 (500 lbs.) . . . \$29.95

CARRY-ALL BAG

A beautiful Sportsways accessory. Heavy-duty Naugahyde material with sturdy water-proof backing and a special reinforced bottom. It's perfect for carrying masks, fins, snorkels, gauges, regulators, etc.

- #721-2 . . . \$19.75

LOBSTER BAG

On land a catch-all for lugging flippers, mask, hood and other gear. Under water it snaps up game and treasures. Hangs out of the way on your wrist, float or float-line and snaps open at a touch.

The Sportsways Lobster Bag won't rip or rot. It's made of light, but durable nylon mesh that can't cause excessive, fatiguing drag in the water.

- #721-4 (small) . . . \$ 8.65
- #721-4A (large) . . . \$10.85

HYDRO-BELT

An attractive two-inch black nylon belt, featuring an airplane-type quick-release, all metal buckle. Extremely easy to slip weights on and off, the Hydro-Belt is also available in stylish Sportsways International Orange. Buckle has black anodized finish.

- #1291 Belt (orange) . . . \$6.50
- #1292 Belt (black) . . . \$6.50

WATERLUNG REGULATOR CARRY BAG

Gold expandable vinyl trimmed with black vinyl and nylon zipper. Provides easy handling and protection for your valuable Waterlung regulator.

- #721-3 . . . \$4.25

4X COMPOUND

Dow Corning Silicone Lubricant for all-around use.

- #1227 4X Tube . . . \$10.00

Dow Corning Silicone Lubricant Spray for aerosol application.

- #1226 4X Spray . . . \$6.50

MAGIC BOND CEMENT

Foam Neoprene Cement for super-stick repair work.

- #1576 Magic Bond . . . \$2.00

SPORTSWAYS EXCLUSIVE WATERLUNG JACKET EMBLEM

A beautiful, distinctive scuba emblem. Hand-embroidered in Red, White & Blue. Show you're proud to be on the Sportsways Waterlung All-American team.

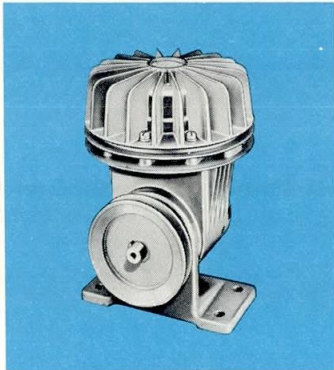


- #SL 102 Emblem . . . \$1.50
- #SL 101 Vinyl Decal . . . \$.25



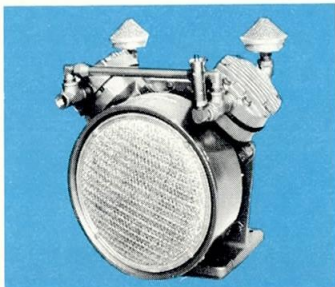
hookah equipment

A Sportsways Hookah Unit simply unites a Waterlung regulator with a surface air supply, connected by a medium pressure air hose. This combination is ideal for diving in a limited area for vastly extended periods of time. Gold diving and a variety of underwater repair or salvage operations find the "Waterlung-Hookah" hook-up the perfect solution to their specific diving problem.



BARE HOOKAH COMPRESSOR

Capacity 3.5. C.F.M.
Pressure 100 P.S.I.
Weight 10 Lbs. (All Aluminum)
R.P.M. 12000
Pre-lubricated, sealed bearings, no lubrication or filtering required.
#744-1 . . . \$75.00



PROFESSIONAL HOOKAH COMPRESSOR

GASOLINE DRIVEN COMPRESSOR
Seven H.P. Briggs and Stratton air cooled engine with recoil starter. Completely portable weighing only 110 Lbs.
#H-128-7 . . . \$1057.00



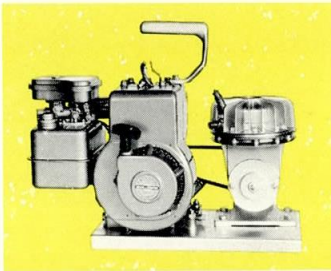
MALIBU REGULATOR

One of the classic, quality regulators made specifically for hookah equipment. Rugged and durable for minimum maintenance. Includes Hookah adapter.
#450 . . . \$50.00



ELECTRIC COMPRESSOR

This model is powered by a 1/3 H.P. Electric motor coupled directly to Sportsways Compressor for minimum weight, size, and maintenance.
Capacity 3.5 C.F.M.
Weight 37 Lbs.
#744-2 . . . \$130.00



SINGLE GASOLINE DRIVEN COMPRESSOR

Two H.P. lightweight aluminum air cooled Briggs & Stratton motors, completely portable, weighing only 37 lbs. This model has a recoil starter and is shock mounted. Capacity 3.5 C.F.M.
#744-4 . . . \$250.00

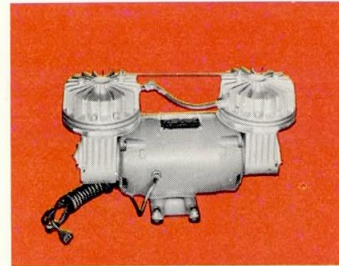
HOOKAH HARNESS: Designed to fit all Sportsways single Hose Regulators, with easily adjustable straps. Harness comes complete with check valve & adaptable fittings.
#744-9 . . . \$24.25

FIELD SERVICE KIT

The field service kit for compressors enables user to make minor overhauls requiring no special tools.
#744-12 . . . \$18.00

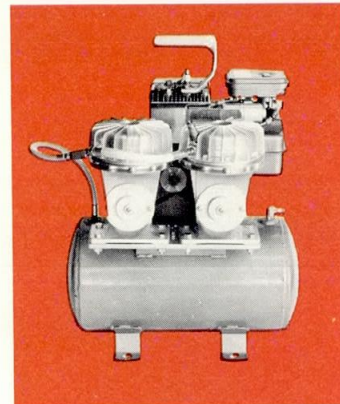
HOOKAH DIVING HOSE

Yellow floating hose made of special vinyl compound that will not contaminate air or deteriorate from exposure. 3/8 i.d.—50' length coupled.
#744-11 50' Lengths . . . \$30.00



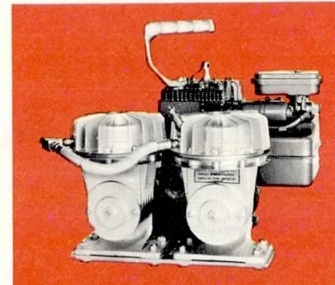
DOUBLE ELECTRIC COMPRESSOR

This model is powered by a 3/4 H.P. Electric motor coupled directly to Sportsways Compressor.
Air capacity 7 C.F.M.
Maximum Air Pressure 100 P.S.I.
#744-3 . . . \$345.00



DOUBLE GASOLINE DRIVEN COMPRESSOR

3 H.P. lightweight aluminum, air cooled Briggs and Stratton motors with recoil starter. This model has 2 Sportsways compressors mounted in line providing 7 D.F.M. at pressures up to 100 P.S.I. Commonly used in depths up to 100 feet.
#744-5 . . . \$390.00



DOUBLE GASOLINE DRIVEN COMPRESSOR WITHOUT TANK

Same as Cat. No. 744-5 without Tank.
#744-6 . . . \$360.00

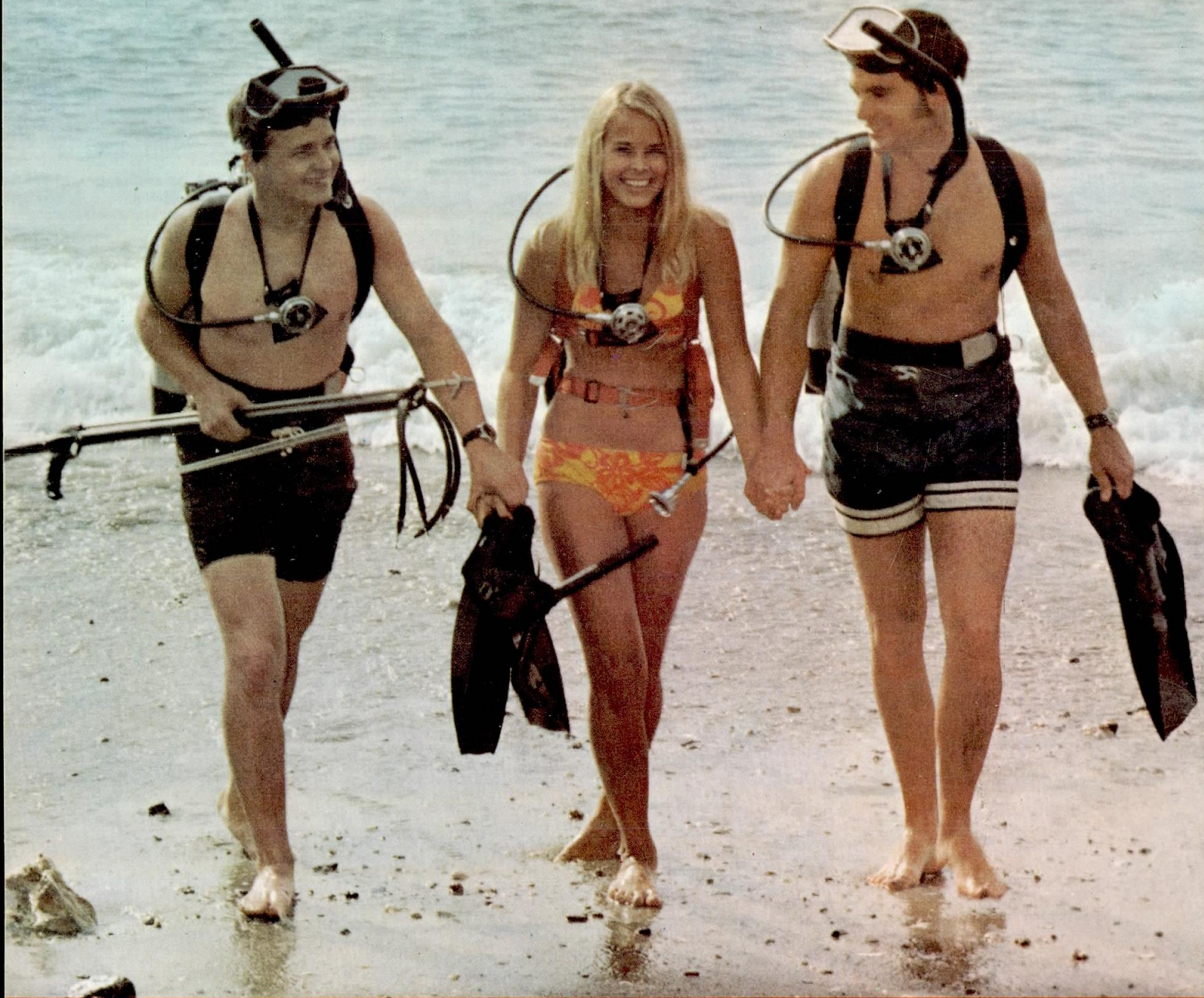


S SPORTSWAYS
WATERLUNG



People Who KNOW
Always Say...

S SPORTSWAYS



DEALER

S THE WORLD'S MOST ADVANCED DIVING EQUIPMENT
SPORTSWAYS

division of PITTMAN RUBBER CO.

2050 LAURA AVENUE • HUNTINGTON PARK, CALIFORNIA 90255

PHONE (213) 587-4173

Printed in U.S.A.